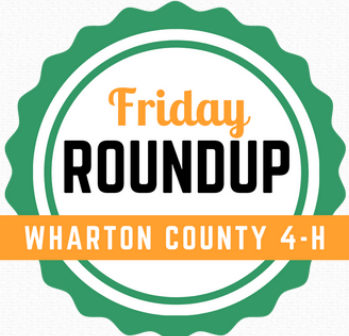


October 10, 2025



Happy Friday, Wharton County 4-H Members!
On Monday, we had a jam packed day! We hosted a Quilts of Valor Sew Day where many members came together to sew quilt blocks for our Quilts of Valor project. We also held a PALA meeting and a County Council meeting, followed by some Bougie Bingo prep painting clovers.
This week, we finalized our Food Show and Food Challenge entries. We have 45 Food Show participants and 20 Food Challenge teams this year. How exciting! If you know anyone who might be interested in serving as a judge, please let me know so I can reach out to them.
On Wednesday and Thursday, several of our 4-H members helped with Ag in the Classroom. A highlight for me was interviewing several of our 4th grade 4-H members on stage in front of their peers. It was so much fun hearing what they enjoy about 4-H and how they would promote it to others. They all agreed that 4-H is FUN and gives them opportunities to participate in lots of different activities.
I hope you all have a wonderful weekend!

Ms. Laura



PALA and County Council Meeting

Monday, December 2, 2025
Extension Office
6:30 PM PALA Meeting
6:30 PM County Council Social
7:00 PM County Council Meeting
Community Service: Adopt A Grandparent

County Food Show and Food Challenge

October 25, 2025
Location: Crescent Hall -Fairgrounds
If you know of anyone who might be interested in serving as a judge please let Ms. Laura know!



Wharton County 4-H T-Shirt

Cost: \$25 each
Sizes: Youth and Adult (Bella + Canvas soft-style shirt)
Payment options: Cash, Check (payable to 4-H PALA), or Venmo (@Wharton4H)
Deadline: Orders and payments are due October 15th
Order yours here: <https://forms.gle/ipP2ka3uBfPrVovK9>



MAJOR SHOW SIGN UP NIGHT

November 3, 2025
3:00 pm - 6:00 pm
If you plan on exhibiting Livestock at any Texas Major or participating in any of the contests please be sure to attend that day or fill out paperwork ahead of time.



Quality Counts must to be completed for those exhibiting livestock. If you have moved to a new age division please be sure to complete the course.

Let Ms. Laura know if you have any questions.



November 11, 2025

Crescent Fairgrounds
Ammann Barn
6036 FM 961 Rd | Wharton, TX 77488

Registration: 5:30pm
Dinner & Program: 6:00pm

Session Options	Topics
Steer & Heifer Dr. Jon DeClerck, Executive Vice President American Simmental Association	Animal Selection Daily Care Nutrition
Lamb & Goat Bucky Jackson, Purina Animal Nutrition	Supplements Showmanship

PLUS! **Animal Demonstrations, Door Prizes & Purina Feed Discount Coupon**

RSVP to 979-543-7756 or email michellef@unitedag.net by November 7, 2025 to receive coupon.



October 10, 2025

New Reimbursement Criteria

We have adjusted it to reflect our only fundraiser.

Members must complete the following to receive reimbursement:

1. Sponsorship

- Secure 1 sponsor for Green Heart Club Membership (\$50 per member).
- Larger sponsorships may be divided among family members.

2. Community Service

- Complete 2 hours of community service.

3. Bougie Bingo Fundraiser (4 credits required)

4. Credits can be earned in the following ways:

- Sign up to bring a dessert → 1 credit
- Volunteer at Bougie Bingo (before or during event): 1 hour = 1 credit
- Donate a Bingo Prize, Bucket Raffle Prize, or \$50 → 1 credit
- Example: \$200 retail value of Bingo prize = 4 credits

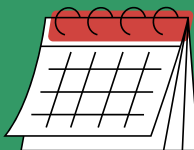
Reimbursement Forms will be due on August 1, 2026.

Form can be found here: <https://agrillife.org/wharton4h/files/2025/09/25-26-District-State-Reimbursement-Form.pdf>

County Calendar

We are excited to release this years county calendar. Please make note that we will do our very best to adhere to these dates but things happen and sometimes they may need to change.

<https://agrillife.org/wharton4h/events/event-deadlines-and-dates/>



☀ Support the Future of Wharton County 4-H! ☀

We are excited to announce the return of our Green Hearts Club Membership Drive! This program gives individuals and businesses the opportunity to invest in the future of our youth while being recognized throughout the year for your support.

Our Wharton County 4-H membership has exploded in recent years, and we are on track to break even more records! Just look at what our 4-H members have accomplished since May:

- ☀ 18 students advanced to State competitions
- ☀ 50 county Recordbooks submitted
- ☀ 34 District Recordbook qualifiers
- ☀ 30 Kids in the Kitchen participants
- ☀ 18 Kids in the Sewing Room participants
- ☀ 71 members in the District Spring Spectacular Contest
- ☀ 19 youth attended Leadership Lab
- ☀ Youth representing Wharton County as State Ambassadors in Livestock, Photography, Poultry, Healthy Texas Youth, and more!

☀ 250 attended our 4-H Banquet, with 100 members recognized for their achievements

And this is just a snapshot! We are also seeing incredible growth in shooting sports, robotics, STEM, and more.

To continue this momentum and provide even greater opportunities, we invite you to team up with the Wharton County 4-H Parent and Adult Leaders Association by becoming a Green Hearts Club sponsor. Membership levels range from \$50 to \$1,000, ensuring there's a level to fit every supporter.

Your membership helps us:

- ✓ Expand programs and projects
- ✓ Provide scholarships
- ✓ Fund prizes for competitions
- ✓ Support and celebrate our future leaders

Thank you for helping us make the best even better!

Together, we are growing leaders right here in Wharton County. ❤



Membership Form:

<https://agrillife.org/wharton4h/files/2025/09/PALA-4H-Green-Hearts-Club-Membership-Form-2025-2026.pdf>

IMPORTANT!

Our BIG fundraiser of the year is off to a great start! With only ONE table and before we sell out! We need your help to ensure it's success.

Sign up to Donate a Bingo/Bucket Raffle/Silent Auction Prize:

<https://www.signupgenius.com/go/10C0A4EADAB2DABF5C34-58193711-11202025#/>

Sign up to Bring a Dessert: <https://www.signupgenius.com/go/10C0B4DAFA62DA2F5CE9-58226464-bougie#/#/>

Volunteer Sign up: <https://www.signupgenius.com/go/10C044CA5AB23ABF49-58415203-bougie#/#/>

Club Managers: Please keep in mind that Ms. Laura is requesting that each club support Bougie Bingo by doing one of the following:

- Donate a Bingo Prize (can be donated by a business)
 - Provide a \$200 cash donation to the Green Hearts Club
 - Donate items equal to \$200 retail value (businesses often donate at cost if you ask!)
- ☛ Please sign up with your contribution here: [Club Fundraiser Sign-Up](#).

**WE HAVE OFFICIALLY
SOLD OUT OF BINGO
TICKETS AND
SPONSORSHIPS!!!!!!**

