



RESILIENT RANCH  
N · E · T · W · O · R · K

# RESILIENT RANCH NETWORK

Texas GLC and Texas A&M Center for Grazinglands & Ranch Management have launched an exciting program: The Resilient Ranch Network. This collaborative project will help support ranching operations through assistance with grazing management strategies and monitoring forage quantity and quality, leading to positive financial outcomes and defining metrics that matter to ranchers like you.

## Participating ranchers can expect:

- Customized grazing management plans
- Ongoing technical assistance and monitoring
- Ranching for Profit two-day school
- Opportunity to increase ranch resilience and profitability
- Opportunity to influence beef sustainability policy

## What we need from ranchers:

- Ranch access for technical assistance and monitoring
- Input on key decision-making metrics



Please scan the QR code to learn more and discuss participation in the Resilient Ranch Network. Or, visit:  
[shorturl.at/GjMbE](http://shorturl.at/GjMbE)

For more information, contact:

Shiner Webb | 806.334.1300 | [shiner@texasglc.org](mailto:shiner@texasglc.org)

Jenny Pluhar | 806.679.8729 | [jenny@texasglc.org](mailto:jenny@texasglc.org)

Rebecca Tasker | 936.715.8868 | [rebecca.tasker@ag.tamu.edu](mailto:rebecca.tasker@ag.tamu.edu)



TEXAS A&M UNIVERSITY  
Center for Grazinglands  
and Ranch Management

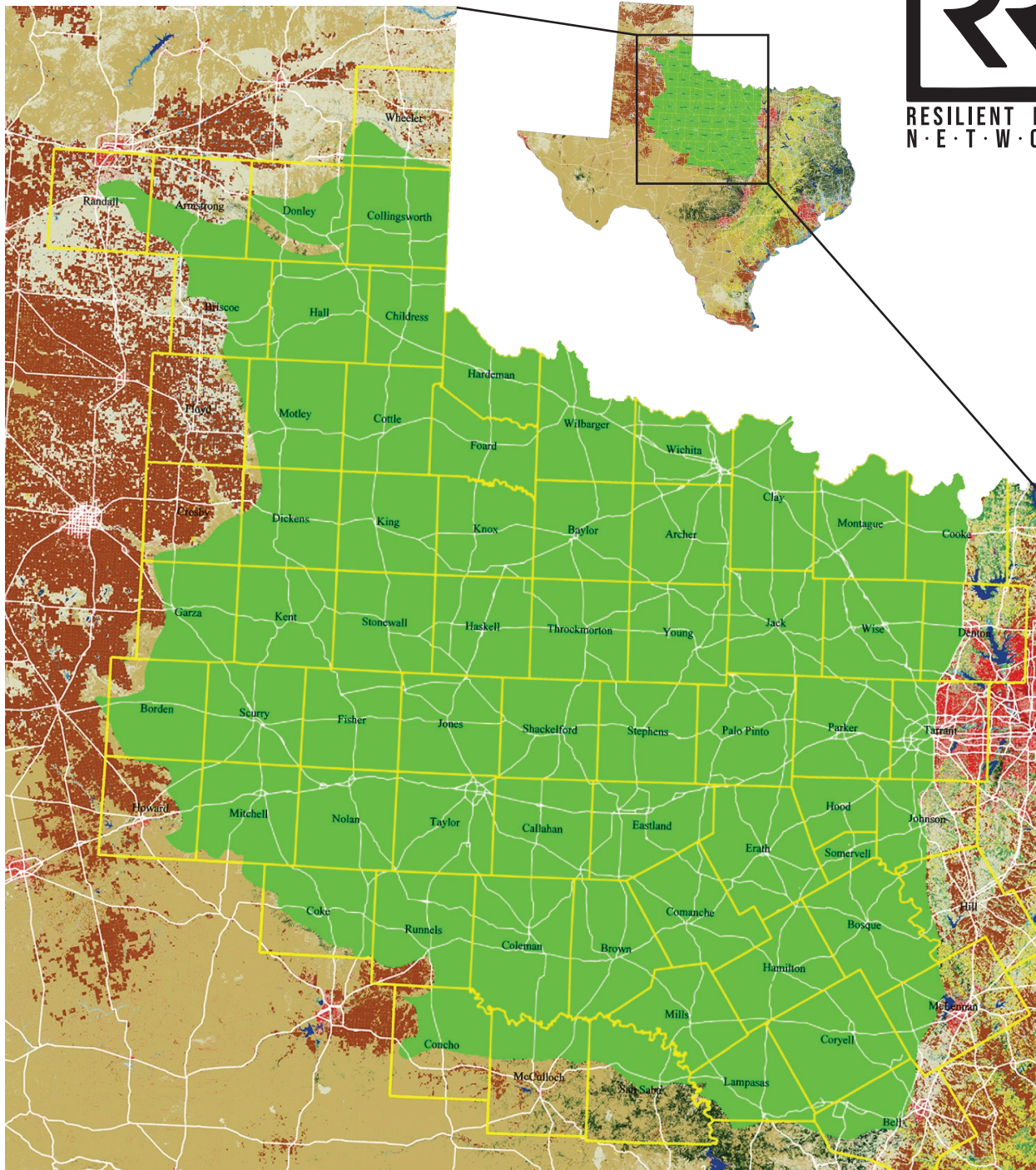


**TXGLC**  
TEXAS GRAZING LAND COALITION  
• Growing Partnerships Through Conservation •



# RESILIENT RANCH NETWORK

## Target Area



Texas A&M AgriLife is an equal opportunity employer and program provider. The members of Texas A&M AgriLife will provide equal opportunities in programs and activities, education, and employment to all persons regardless of race, color, sex, religion, national origin, age, disability, genetic information, veteran status, sexual orientation, gender identity, or any other classification protected by federal, state, or local law and will strive to achieve full and equal employment opportunity throughout Texas A&M AgriLife.