



4-H TRAILBLAZER



Tarrant County

May 2021

2020-21 TARRANT COUNTY
4-H YOUTH COUNCIL
OFFICER TEAM

President

Amelia Morrow

Vice President

Kaitlin Lavender

Secretary-Treasurer

Valerie Morrow

Reporter

Rachel Claxton

Historian

Halle Thrower

Chair, Community Service

Rumaysa Drissi



OFFICER ELECTION SEASON IS UPON US ONCE AGAIN!



**Tarrant County
4-H
County Youth Council
Officer Nominations
due
Tuesday,
May 18th**

**Nomination Form can be
found at:**

<https://forms.gle/KgBL6t87ftGk3Qbt9>

WHY RUN FOR OFFICE?

- Play an integral role in what we do at the county level
- Be a part of the planning process for the 4-H Program in Tarrant County
- Share in community service activities
- Gain valuable leadership experience



"Texas A&M AgriLife Extension provides equal opportunities in its programs and employment to all persons, regardless of race, color, sex, religion, national origin, disability, age, genetic information, veteran status, sexual orientation, or gender identity. The Texas A&M University System, U.S. Department of Agriculture, and the County Commissioners Courts of Texas Cooperating."

TEXAS A&M
AGRI LIFE
EXTENSION

PRAIRIE VIEW
A&M UNIVERSITY
COLLEGE OF AGRICULTURE
AND HUMAN SCIENCES
Cooperative Extension Program

Jacqui Frampton

jacqueline.frampton@ag.tamu.edu
CEA - 4-H Youth Development

TEXAS A&M
AGRI LIFE
EXTENSION

Jordan Peldyak

jordan.peldyak@ag.tamu.edu
CEA - 4-H Youth Development

PRAIRIE VIEW
A&M UNIVERSITY
COLLEGE OF AGRICULTURE
AND HUMAN SCIENCES

Cooperative Extension Program

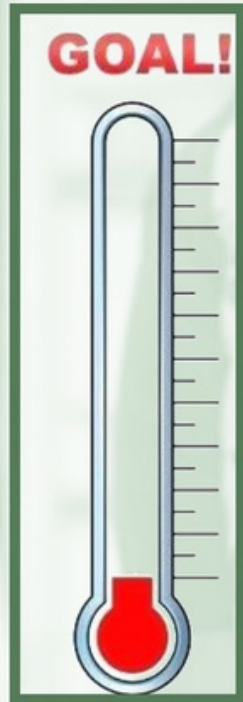
Emily Shannon

emily.shannon@ag.tamu.edu
CEA - 4-H Youth Development

Texas A&M AgriLife Extension Service
Tarrant County
200 Taylor St., Suite 500
Fort Worth, TX 76196
817-884-1945



2020/2021 Tarrant County 4-H Clover Campaign



\$9,000

GIVING LEVELS:	
FRIEND	\$1-\$25
HEAD	\$26-\$100
HEART	\$101-250
HANDS	\$251-\$500
HEALTH	\$501-\$1000
MOTTO	\$1001+

Funds are used to recognize and support the members of 4-H community clubs, as well as provide scholarship opportunities.

PayPal:

tarrant4hala@gmail.com

Checks:

Tarrant County ALA
200 Taylor Street, #550
Fort Worth, TX 76196

Donors will be recognized at the year-end Awards Reception.

Thank You!

DISTRICT ROUND-UP

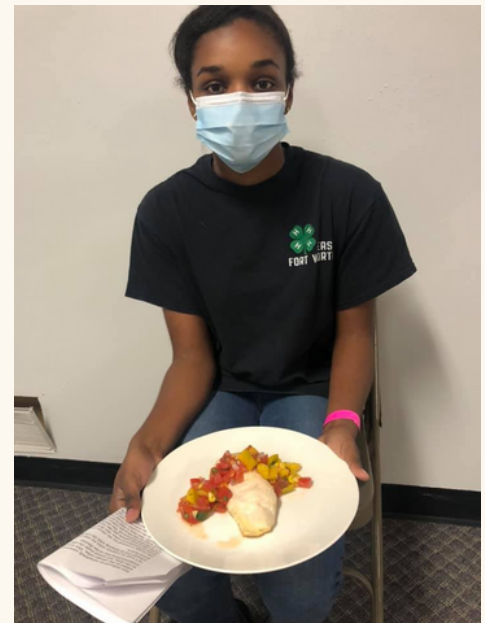
**Congrats to our 2021 District IV 4-H Round Up
Participants!!**

Jackie Price - 7th place Senior Public Speaking

Amelia Morrow - 1st place Senior Share the Fun (Poetry/Prose) - **qualifier for State 4-H
Round Up in June!** 🇹🇽

Jasmine Price - 5th place Intermediate Food Show (Main Dish)

Delaney Wessel - 2nd place Senior Food Show (Main Dish)



*We will e-mail you when ribbons and
scoresheets come in from the district office!*

PHOTOGRAPHY

Congrats to all our 2021 County Photography Contest participants!
(Ribbons and judges' sheets are available for pick-up at the county office)

Juniors



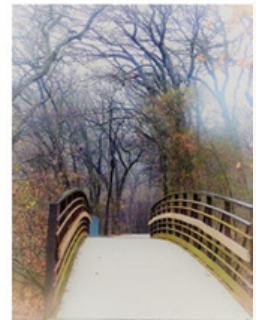
Animals—Domestic

Leilah Burnside—Blue

Animals—Wildlife

Leilah Burnside—Blue

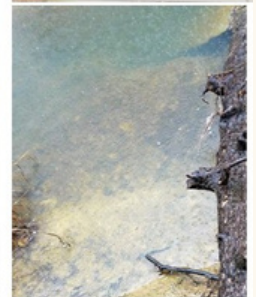
Gabriela Ramirez—Blue



Catch-All

Leilah Burnside—Blue

Emily Harrelson—Blue

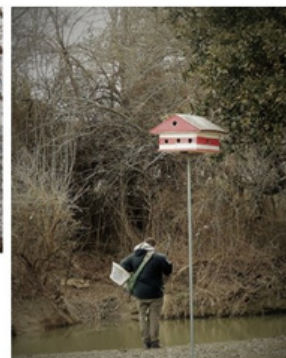


Details and Macro

Leilah Burnside—Blue

Emily Harrelson—Blue

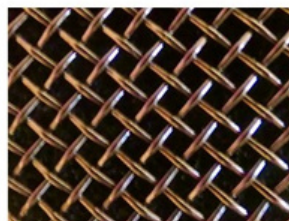
Gabriela Ramirez—Blue



Elements of Design

Leilah Burnside—Blue

Emily Harrelson—Blue



Enhanced

Leilah Burnside—Red

Emily Harrelson—Blue



Food

Leilah Burnside—Red

Gabriela Ramirez—Red

Juniors

Landscape and Nature (Non-Animal)

Leilah Burnside—Blue

Emily Harrelson—Blue

Leading Line

Leilah Burnside—Red

Emily Harrelson—Blue

Motion/Action

Leilah Burnside—Blue

Emily Harrelson—Red

People

Emily Harrelson—Blue

Plant/Flora

Leilah Burnside—Red

Emily Harrelson—Blue

Gabriela Rodriguez—Blue

Shadow/Silhouette

Leilah Burnside—Red

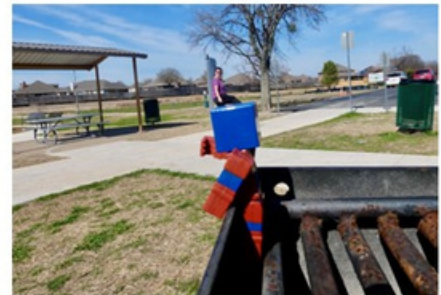
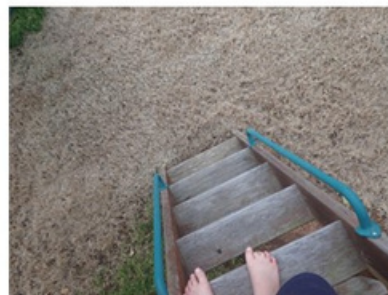
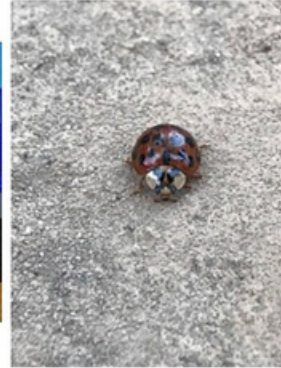
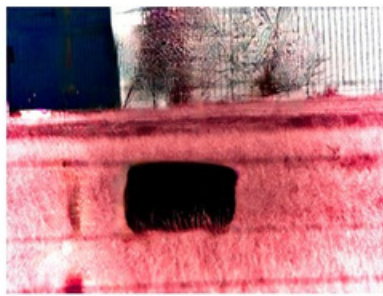
Emily Harrelson—Blue

Gabriela Rodriguez—Blue

Theme

Emily Harrelson—Blue

Gabriela Rodriguez—Blue



Intermediates

Animals—Domestic

Joseph LeBlanc—Blue

Sofia Marshall—Red

Animals—Wildlife

Joseph LeBlanc—Blue

Darby Steelhammer—Blue

Tober Steelhammer—Blue

Catch-All

Owaiss Drissi—Blue

Joseph LeBlanc—Red

Sofia Marshall—Blue

Tober Steelhammer—Red

Details and Macro

Owaiss Drissi—Red

Joseph LeBlanc—Blue

Tober Steelhammer—Red

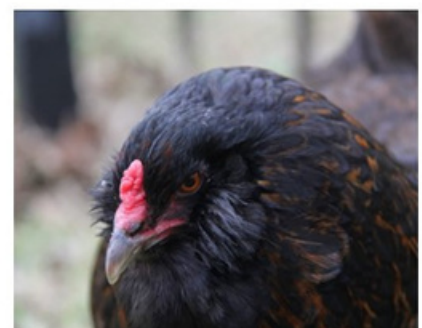
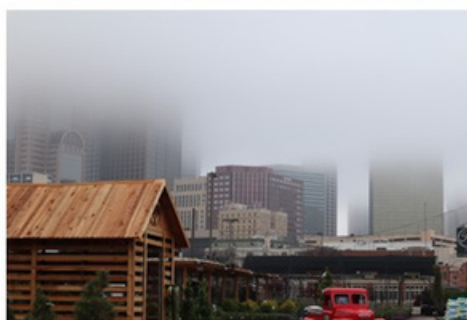
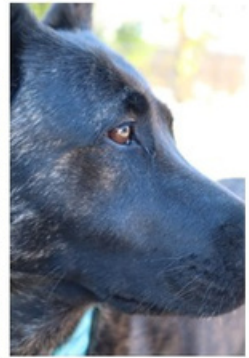
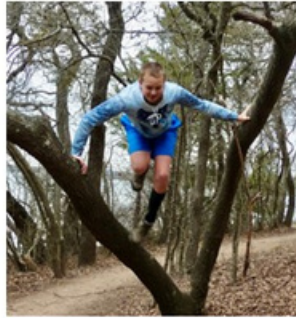
Elements of Design

Joseph LeBlanc—Red

Darby Steelhammer—Blue

Enhanced

Olivia Harrelson—Blue



Intermediates

Landscapes & Nature—Non-Animal

Owaiss Drissi—Red

Olivia Harrelson—Red

Joseph LeBlanc—Blue

Sofia Marshall—Blue

Darby Steelhammer—Blue

Tober Steelhammer—Red

Leading Line

Darby Steelhammer—Red

Motion/Action

Olivia Harrelson—Blue

Joseph LeBlanc—Blue

Darby Steelhammer—Blue

Tober Steelhammer—Blue

People

Olivia Harrelson—Red

Plant/Flora

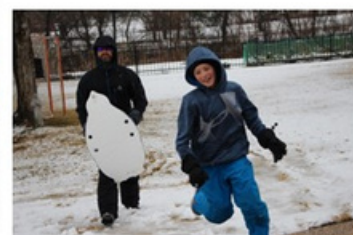
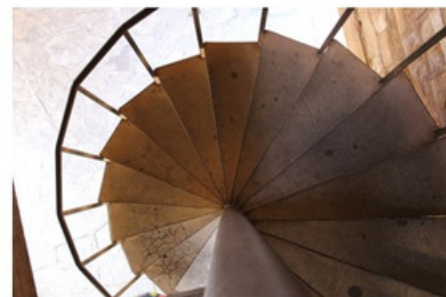
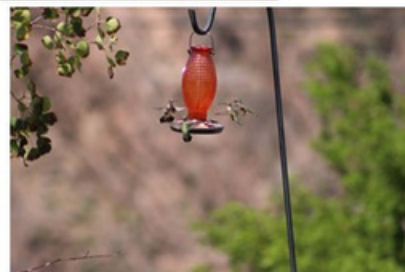
Joseph LeBlanc—Red

Sofia Marshall—Blue

Tober Steelhammer—Blue

Theme

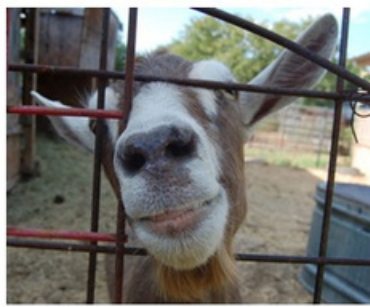
Olivia Harrelson—Blue



Seniors

Animals - Domestic

Charlie Bryant—Blue



Kaylie Von Honaker—Red

Animals - Wildlife

Kaylie Von Honaker—Blue

Hannah West—Red



Details & Macro

Charlie Bryant—Blue

Kaylie Von Honaker—Red

Hannah West—Blue

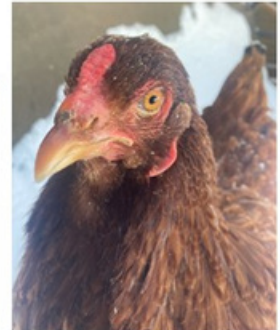


Elements of Design

Kaylie Von Honaker—Red

Food

Hannah West—Blue



Landscape & Nature - Non-Animal

Hannah West—Blue

Motion/Action

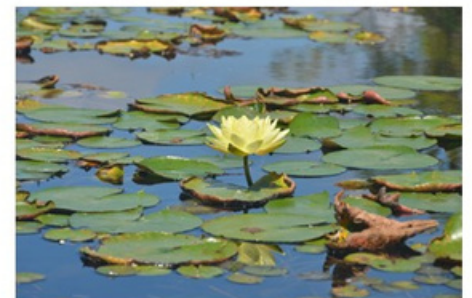
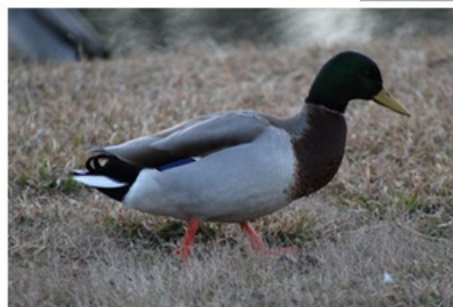
Kaylie Von Honaker—Blue



People

Kaylie Von Honaker—Blue

Hannah West—Blue



Plant/Floral

Kaylie Von Honaker—Blue

Hannah West—Blue

COUNTY NEWS



TARRANT COUNTY 4-H YOUTH COUNCIL

MAY COMMUNITY SERVICE PROJECT

Activity Packages for Adults

Create care packages with all or some of the following:

Card/Note of Encouragement
Crossword Puzzles for adults
Connect the Dots for adults
Word Searches for adults
Books/Games for adults
Other Items of Similar Nature

Send Activity Packages to:
"Any Resident"

Westpark Rehabilitation and Living
900 Westpark Way; Euless, TX 76040
or a location of your choosing

Report back to tarrantyouthcouncil@gmail.com with
of care bags made and date delivered or mailed.



Cooperative Extension Program

"THE MEMBERS OF TEXAS A&M AGRILIFE WILL PROVIDE EQUAL OPPORTUNITIES IN PROGRAMS AND ACTIVITIES, EDUCATION, AND EMPLOYMENT TO ALL PERSONS REGARDLESS OF RACE, COLOR, SEX, RELIGION, NATIONAL ORIGIN, AGE, DISABILITY, GENETIC INFORMATION, VETERAN STATUS, SEXUAL ORIENTATION OR GENDER IDENTITY AND WILL STRIVE TO ACHIEVE FULL AND EQUAL EMPLOYMENT OPPORTUNITY THROUGHOUT TEXAS A&M AGRILIFE SYSTEM, U.S. DEPARTMENT OF AGRICULTURE, AND THE COUNTY COMMISSIONERS COURTS OF TEXAS COOPERATING."

TEXAS A&M
AGRILIFE
EXTENSION

SEND PHOTOS OF YOU OR YOUR
4-H'ER TO THE COUNTY YOUTH
COUNCIL HISTORIAN AND
REPORTER

WE WANT TO SEE OUR TARRANT COUNTY
4-H'ERS IN ACTION!

Email pictures of 4-H'ers participating in
4-H related events, projects, or meetings to
tarrantyouthcouncil@gmail.com
with the subject line "4H Photos for the
CYC." We cannot wait to see all the smiling
faces!

2021 District 4 Storyboard Contest



Congratulations
To Our
Winners!



Juniors

Name	County	Place	Category
Kennedy Neu	Cooke	1st	Home Furnishing
Rylee Blount	Red River	1st	Pet Clothing
Jacie Stephens	Red River	1st	Jewelry
Gabriela Ramirez	Tarrant	1st	Wearable
Sloan Phillips	Van Zandt	2nd	Wearable

Intermediates

Name	County	Place	Category
Raegan Neu	Cooke	1st	Wearable
Mercedes Ramirez	Tarrant	2nd	Wearable

Seniors

Name	County	Place	Category
Kayla McMains	Red River	1st	Wearable
Amelia Morrow	Tarrant	1st	Pet Clothing
Riley Stephens	Red River	1st	Accessory
Gwynivere Tartan	Collin	1st	Home Decor
Mayce Northcutt	Red River	1st	Home Furnishing
Carlee Blount	Red River	2nd	Home Furnishing

DISTRICT IV 4-H UPDATES

**Tarrant
County 4-H
Record
Books are
due by
Monday,
June 7,
2021!**



District 4 Record Book Contest

Registration in 4H Online
Opens: June 17, 2021
Closes: July 1, 2021

Each County Extension Office will set their own deadline to have the Recordbook dropped off to their office. Check with your local Extension Agent for those details.

**We will be judging the actual hard-copies of the
Recordbooks at District this year.**

Educational programs of the Texas A&M AgriLife Extension Service are open to all people without regard to race, color, sex, religion, national origin, age, disability, genetic information, or veteran status. The Texas A&M University System, U.S. Department of Agriculture, and the County Commissioners Courts of Texas Cooperating



DISTRICT IV 4-H UPDATES

JUNE 15TH - 17TH

HOPKINS COUNTY EXPO CENTER

2021

District IV Horse Show



Schedule

TUESDAY 15TH

3PM - 7PM

Move In / Check In

WEDNESDAY 16TH

8AM - 5PM

Educational Clinics: Showmanship / Trail / Boxing/
Horsemanship / Paid Trail Warm Ups

Futurity Horse Show classes

THURSDAY 17TH

8AM - 5PM

District IV Horse Show



Finer Points:

- Clinic is open to ALL 4-H members and horses, but only horses validated by May 1st 2021 will be allowed to show on Thursday. Clinic participants can opt to show in the District Horse Show with NO late fees being applied.
- Yearling and two year old futurity classes will be held on Wednesday.
- All other show classes will be on Thursday.
- Check-in office will be open all Wednesday

The members of Texas A&M AgriLife will provide equal opportunities in programs and activities, education, and employment to all persons regardless of race, color, sex, religion, national origin, age, disability, genetic information, veteran status, sexual orientation or gender identity and will strive to achieve full and equal employment opportunity throughout Texas A&M AgriLife. The Texas A&M University System, U.S. Dept. of Agriculture, and the County Commissioners Courts of Texas Cooperating

TEXAS A&M
AGRI LIFE
EXTENSION

**DISTRICT IV HORSE SHOW IS
OUR DISTRICT'S QUALIFIER
FOR STATE 4-H HORSE
SHOW!**



**DID YOU KNOW? "ULTRA" IS A 4-H
LEADERSHIP CAMP OPEN TO ALL
INTERMEDIATE (GRADES 6-8) AND
SENIOR (GRADES 9-12) 4-H MEMBERS?**



2021
Ultra Leadership Camp

Save the Date
July 12-14, 2021

More Details Coming Soon!

Educational programs of the Texas A&M AgriLife Extension Service are open to all people without regard to race, color, sex, religion, national origin, age, disability, genetic information, or veteran status. The Texas A&M University System, U.S. Department of Agriculture, and the County Commissioners Courts of Texas Cooperating





SUMMER CAMPS



JULY 14 -17, 2021

The 4-H and Youth Development (4HYD) Unit of the Cooperative Extension Program (CEP) with funding from The San Antonio Livestock Exposition (S.A.L.E.) will award one hundred (100) \$125 scholarships to attend Youth Lab, a pre-college outreach summer virtual program.

APPLICATION DEADLINE

APRIL 30, 2021

FILLABLE ONLINE

COST

FREE

APPROX GRAD

8TH-11TH

CAN APPLY

WHAT DO YOU GET?

T-Shirt | 4-H Journal | Supplies for activities



TO APPLY VISIT

https://pvamu.ce1.qualtrics.com/jfe/form/SV_9Hulw9HL7H8Kc8



Panasonic Video
International
Innovation



The Cooperative Extension Program does not discriminate against anyone regardless of their race, color, national origin, religion, sex, gender identity (including gender expression), sexual orientation, disability, age, marital status, family/parental status, income derived from a public assistance program, political beliefs, record or retaliation for prior civil rights activity, in any program or activity. Persons who require communication in a language other than English or with a disability who require Curbis Parlas at 1-800-261-0029 in advance.

FREE VIRTUAL STEM CAMP

Deadline extended to May 17, 2021



SUMMER CAMPS



TEXAS 4-H CAMPS SUMMER 2021

TEXAS A&M
AGRI LIFE
EXTENSION

Texas 4-H Center
Lake Brownwood, Texas



CAMP:	Dates	Registration Fee Youth/Adult
FISHING CAMP	June 16-18	\$240/\$130
WILDLIFE CAMP	June 16-18	\$240/\$130
APERTURE ACADEMY	June 16-19	\$300/\$160
HORIZONS CAMP	June 27-30	\$300/\$160
MISSION POSSIBLE MENTORS	June 27-30	\$125
MISSION POSSIBLE	June 28-30	\$175/\$120
COUNTY CAMP I	July 1-3	\$200/\$110
COUNTY CAMP II	July 5-7	\$200/\$110
OUTDOOR ADVENTURE CAMP	July 7-9	\$200/\$110
PRIME TIME I	July 11-14	\$250/\$135
PRIME TIME II	July 14-17	\$250/\$135

More information at: texas4hcenter.tamu.edu

Registration opens February 1, 2021

The members of Texas A&M AgriLife will provide equal opportunities in programs and activities, education, and employment to all persons regardless of race, color, sex, religion, national origin, age, disability, genetic information, veteran status, sexual orientation or gender identity and will strive to achieve full and equal employment opportunity throughout Texas A&M AgriLife.



SUMMER CAMPS



Aperture Academy

A PHOTOGRAPHY CAMP FOR BEGINNERS

TEXAS 4-H CENTER 2021

JUNE 16-19

GRADES 5-8

\$300/YOUTH

\$160/ADULTS

Registration late fee \$50
after June 14

Join us this summer for a new and exciting camp where youth will learn the basics of photography. This camp is geared for beginners and promises hands-on learning in a fun camp atmosphere. Register online at texas4hcenter.tamu.edu. Hurry, limited spots available!



What is Aperture Academy?

This is a 4-day camp where participants will have the opportunity to learn basic photography skills and techniques from our best leaders and ambassadors. Youth will participate in hands-on activities and lessons on the grounds of the Texas 4-H Conference Center. Campers will learn about:

- Types and care of cameras and equipment
- How the Camera Works
- Manual Settings
- Lighting
- Exposure
- Principles of Design
- Composition and Techniques

4-H CENTER FACTS

The 4-H Center is part of Texas A&M AgriLife Extension and has been in the youth camping business since 1975! The Center is located on Lake Brownwood, in the geographic center of the State. Accredited by the American Camp Association (ACA), families are assured of a quality program and facility that meets rigorous standards.

- Accommodations – youth are housed, by gender, in air-conditioned dormitories. Each dorm has its own restroom and shower facilities.
- Staff – program coordinated by Youth Professionals of AgriLife Extension and college interns.
- Health Care – nurse on duty 24/7. All medications are administered by the nurse.
- Meals – a full time staff provides three wholesome, balanced meals each day.
- Lunch and Dinner include a self-serve salad bar, ensuring there's something for everyone.

Early registration, February 1–June 14. Pay a \$50 deposit and the rest of the fee is due June 28th. Late registration, additional \$50 late fee. Registration covers all meals, lodging, refreshments, health care services, facility and programming fees for the 3 night, 4 day event. Registrations accepted on a first come first served basis until the camp is filled. Youth are assigned to dormitories with other youth from their county; youth may request a dorm room-mate during the registration process. Please note any food allergies or special meal requests (gluten free, vegetarian, etc.) on the registration form.

REGISTER NOW ON THE TEXAS 4-H
CENTER WEBSITE AT
[TEXAS4HCENTER.TAMU.EDU](https://texas4hcenter.tamu.edu)

Individuals who require any type of accommodation in order to participate in this program are encouraged to contact the Texas 4-H Center to determine how reasonable accommodations can be made. Educational programs of the Texas A&M AgriLife Extension Service are open to all people without regard to race, color, religion, sex, national origin, age, disability, genetic information or veteran status. The Texas A&M University System, The United States Department of Agriculture and the County Commissioners Courts of Texas Cooperating.



SUMMER CAMPS



4-H Wildlife Camp

- June 16-18
- Grades 3-12
- \$240/Youth
- \$130/Adult

Registration late fee
\$50 after June 14

TEXAS A&M
AGRI LIFE
EXTENSION
Advancing the Quality of Life

This camp is for any youth wanting to learn more about wildlife and about stewardship in Texas.

Youth will learn the basics of wildlife identification and habitat evaluation along with some fun and interesting related topics and activities. Participants will spend a lot of time outdoors!

Register at texas4hcenter.tamu.edu

4-H Wildlife Camp

What is 4-H Wildlife Camp?

Participants will have the opportunity to learn about wildlife in Texas. They will participate in hands on activities and education of the surrounding ecoregion of Brownwood at the Texas 4-H Center.

Campers will learn about:

- Wildlife and vegetation identification.
- Habitat evaluation and management.
- Hunter education.
- Laws and ethics.
- Aquatic ecology and all other creatures in the water.
- Respect and enjoyment of nature and the outdoors.
- And lot more fun with wildlife education.

Tell me about the Texas 4-H Center

The 4-H Center is part of Texas A&M AgriLife Extension and has been in the youth camping business since 1975! The Center is located on Lake Brownwood, in the geographic center of the State.

Accredited by the American Camp Association (ACA), families are assured of a quality program and facility that meets rigorous standards.

Accommodations — youth are housed, by gender, in air-conditioned dormitories. Each dorm has its own restroom and shower facilities.

Staff — program coordinated by Youth Professionals of AgriLife Extension and college interns. Health Care — nurse on duty 24/7. All medications are administered by the nurse.

Meals — a full time staff provides three wholesome, balanced meals each day.

Lunch and Dinner include a self-serve salad bar, ensuring there's something for everyone.

For more information:

Call 325.784.5482

Email: melvin.atkinson@ag.tamu.edu

Web: texas4hcenter.tamu.edu

Early registration, February 1—June 14. Pay a \$50 deposit and the rest of the fee is due June 14th. Late registration, additional \$50 late fee. Registration covers all meals, lodging, refreshments, health care services, facility and programming fees. Registrations accepted on a first come first served basis until camp is filled. Counties are required to provide Adult Chaperones. County groups (youth and adult) are housed together, by gender. Special room requests should be noted on Registration. Please note any food allergies or special meal requests (gluten free, vegetarian, etc.) on the Registration form.

Register at texas4hcenter.tamu.edu

Youth Camps & Programs [Register Now link!](#)

Individuals who require any type of accommodation in order to participate in this program are encouraged to contact the Texas 4-H Center to determine how reasonable accommodations can be made. Educational programs of the Texas A&M AgriLife Extension Service are open to all people without regard to race, color, religion, sex, national origin, age, disability, genetic information or veteran status. The Texas A&M University System, The United States Department of Agriculture and the County Commissioners Courts of Texas Cooperating.



4-H LIVESTOCK NEWS

Late Tag Ordering for State Validation is STILL OPEN. Be sure you are regularly checking your 4-HOnline emails for deadlines!

DEADLINE IS MAY 14

Summer Validation Dates

STEERS/HEIFERS

Saturday, June 19 - 8am-12pm

SHEEP/GOATS/SWINE

Saturday, June 26 - 8am-12pm

Location: North Texas High School
Rodeo Arena

Check your 4-HOnline e-mail for more info or e-mail jacqueline.frampton@ag.tamu.edu with questions

Summer Horsemanship Clinic

June 10th-11th
Hosted by Kaufman
County 4-H



Registration Open on
4HOnline





May 2021

Sun	Mon	Tue	Wed	Thu	Fri	Sat
						1
2	3	4	5	6	7	8
9	10	11	12	13	14 LATE TAG ORDERING DEADLINE	15
16	17	18 2021-2022 CYC Officer Nominations Due	19	20	21	22
23 31	24 CYC MTG @ 6:30 pm ALA MTG @ 7:30 pm Zoom	25	26	27	28	29

Monday, May 31—County Holiday (Memorial Day)

"Texas A&M AgriLife Extension provides equal opportunities in its programs and employment to all persons, regardless of race, color, sex, religion, national origin, disability, age, genetic information, veteran status, sexual orientation, or gender identity. The Texas A&M University System, U.S. Department of Agriculture, and the County Commissioners Courts of Texas Cooperating."