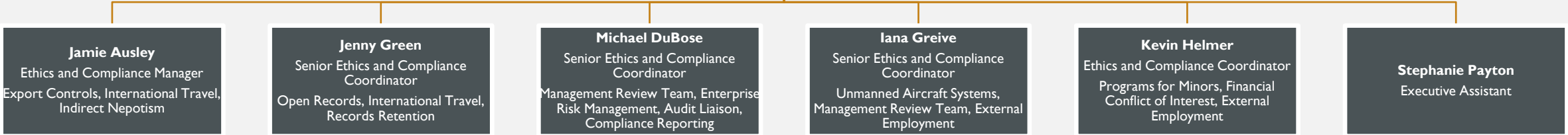


TEXAS A&M AGRILIFE

AGRILIFE ETHICS & COMPLIANCE: *UAS,
EXTERNAL EMPLOYMENT/FACULTY
CONSULTING & HEMP IN RESEARCH*

Debi Fincher
Ethics and Compliance Director



Jamie Ausley
Ethics and Compliance Manager
Export Controls, International Travel,
Indirect Nepotism

Jenny Green
Senior Ethics and Compliance
Coordinator
Open Records, International Travel,
Records Retention

Michael DuBose
Senior Ethics and Compliance
Coordinator
Management Review Team, Enterprise
Risk Management, Audit Liaison,
Compliance Reporting

Iana Greive
Senior Ethics and Compliance
Coordinator
Unmanned Aircraft Systems,
Management Review Team, External
Employment

Kevin Helmer
Ethics and Compliance Coordinator
Programs for Minors, Financial
Conflict of Interest, External
Employment


Stephanie Payton
Executive Assistant

Alex Cleghorn
Ethics and Compliance Coordinator
Export Controls, Research
Compliance

UNMANNED AERIAL SYSTEMS

Iana Greive | 979.314.0485 | iana.greive@ag.tamu.edu

Jenny Green | 979.862.6307 | jkgreen@ag.tamu.edu

A photograph of two men standing in a cornfield. The man on the left is wearing glasses and a blue jacket, holding a cob of corn. The man on the right is wearing glasses and a plaid shirt, holding a camera. The background is a dense field of corn stalks.

CAN I FLY?

- Drones under 55 pounds must be registered with the FAA
 - [Dronezone.faa.gov](https://www.faa.gov/uas/dronezone)
- Need to be FAA-Certified Drone Pilot
- Need COA if deviating from Part 107 rules:
 - No operating from moving vehicle/aircraft
 - Daylight operations
 - Visual Line of Sight
 - Visual observer
 - Only operating one aircraft at a time
 - Yield the right of way to manned aircraft
 - Operation over people
 - Operation in certain airspace
 - Operating limitations for small unmanned aircraft



AGRILIFE UAS FLIGHT APPLICATION



Submit application with all information included a minimum of 15 days prior to planned flight.



Once all information has been reviewed, the Texas A&M AgriLife Supervising Authority will vote to approve



Once approved, always notify E&C office prior to flights with location, flight time and associated project(s)

EXTERNAL EMPLOYMENT & FACULTY CONSULTING

Debi Fincher | 979.845.4789 | debra.fincher@ag.tamu.edu

SYSTEM REGULATION 31.05.01 AND 31.05.02

- Disclosure of consulting or employment with foreign entities to our office for Restricted Party Screening and other Export Controls
 - Information is shared with the Research Security Office
- Receives compensation, services, goods, or any other item of value.

[Faculty Consulting and/or External Employment](#)

[External Employment](#)

HEMP IN RESEARCH

Alex Cleghorn | 979.845.4766 | alexandra.Cleghorn@ag.tamu.edu

Jamie Ausley | 979.458.8214 | jlAusley@ag.tamu.edu

A woman with long dark hair, wearing a red long-sleeved shirt and a watch, is kneeling in a field of young green plants. She is using a portable white scale to weigh a small plant. The background shows rows of similar plants in a field.

DEFINITION OF HEMP

- As in the 2018 Farm Bill Act: The term ‘hemp’ means the plant *Cannabis sativa* L. and any part of that plant, including the seeds thereof and all derivatives, extracts, cannabinoids, isomers, acids, salts, and salts of isomers, whether growing or not, with a delta-9 tetrahydrocannabinol concentration of not more than 0.3 percent on a dry weight basis.

A woman with dark hair, wearing a red long-sleeved shirt and a watch, is kneeling in a field of young green plants. She is using a portable, white, mechanical scale to weigh a small plant. The background is a field of similar plants under a bright sky.

WHAT GOVERNMENTAL AGENCIES ARE GOVERNING THIS?

- Texas Department of Agriculture (TDA)
 - United States Department of Agriculture (USDA)
 - Food & Drug Administration (FDA)
 - Drug Enforcement Agency (DEA)
 - Local Law Enforcement
-
- And of course AgriLife Ethics & Compliance

A woman with dark hair, wearing a red jacket and sunglasses on her head, is kneeling in a field of young green plants. She is using a portable, white, three-tiered scale to weigh a plant. The background is a field of similar young plants under a bright sky.

WHAT IS REQUIRED BEFORE HEMP RESEARCH CAN BEGIN?

- Researchers must contact the appropriate Research Associate Director/designee before starting hemp research
 - Must submit a research plan included lab/research space, personnel included on research and GPS coordinates while maintaining a chain of custody and transport manifest documents regarding any movement of hemp
- Must contact AgriLife Contracts if a contract or material transfer agreement is needed to purchase or receive hemp

A woman with long dark hair, wearing a red long-sleeved shirt and a watch, is kneeling in a field of young green plants. She is using a portable, white, mechanical scale to weigh a plant. The background is a field of similar plants under a bright sky.

WHO WILL I NEED TO CONTACT BEFORE I BEGIN HEMP RESEARCH?

- Research Associate Director: Dr. Larry Redmon
 - 979.845.4808
 - l-redmon@tamu.edu
- AgriLife Ethics & Compliance
 - 979.845.4789
 - risk-compliance@ag.tamu.edu

PROCEDURE 15.99.02.A0.01: HEMP IN RESEARCH

Texas A&M AgriLife is providing guidance in accordance with the Texas Department of Agriculture (TDA), the United States Department of Agriculture (USDA), the Food & Drug Administration (FDA), and the Drug Enforcement Agency (DEA) implementation of research regarding hemp and any other relevant U.S. governmental administrations. Texas A&M AgriLife Research (AgriLife Research) is committed to the security of hemp seed used in research conducted by the agency, including either agricultural or academic research, regardless of the source of funding or whether or not the research is sponsored.

<https://agrilifeas.tamu.edu/documents/159902a001.pdf/>

QUESTIONS?

- Debi Fincher 979.845.4789 debra.fincher@ag.tamu.edu
- Jamie Ausley 979.458.8214 jlausley@ag.tamu.edu
- Alex Cleghorn 979.845.4766 alexandra.cleghorn@ag.tamu.edu
- Jenny Green 979.862.6307 jkgreen@ag.tamu.edu
- Iana Greive 979.314.0485 iana.greive@ag.tamu.edu