



September 2024



PHONE: 936-539-7823

FAX: 936-788-8394

ON THE WEB
County 4-H
[agrilife.org/
montgomery4h](http://agrilife.org/montgomery4h)

Facebook:
[@4HMontgomeryCounty](https://www.facebook.com/4HMontgomeryCounty)

Twitter:
[@MontgomeryCo4H](https://twitter.com/MontgomeryCo4H)

Instagram:
[@Montcotx4H](https://www.instagram.com/Montcotx4H)
County Extension
Service
montgomery.agrilife.org

District
d94-h.tamu.edu

State
texas4-h.tamu.edu

Office Hours
8:00am - 12:00pm
1:00pm - 5:00pm

M. Michelle Mihalek
County Extension Agent
4-H Youth Development

Alyssa Sims
County Extension Agent
Urban Youth Development

Jo Picken
4-H Program Assistant

Tami Ward
4-H Volunteer Coordinator

Montgomery County 4-H Focus

2024-2025 4-H YEAR
[4-H Online \(4honline.com\)](http://4honline.com)

WELCOME

NEW MEMBERS

4-H enrollment officially started August 15th. If you will be going into the 3rd grade, please wait until after Sept. 1 to enroll so the system doesn't consider you a Clover Kid.

Aug. 15-Oct. 31 yearly enrollment fee is \$25. Nov. 1st it will increase to \$30

**WELCOME
BACK!**

RETURNING MEMBERS

Each year starts with zero-enrollment so all returning member must re-enroll; youth and adult members.

DO NOT create a new member profile. Log into your existing profile, update information, and pay the membership fee.

Nobody is too old for 4-H!! Adult volunteers are always needed.

**VOLUNTEER TODAY.
INSPIRE FOR
A LIFETIME.**

Adult volunteers are always needed to help grow our 4-H program. You can participate in a variety of ways.
Get enrolled as an approved Volunteer &
Find out now how you can help your club!

EXTRA, EXTRA ...READ ALL ABOUT IT

HOW DOES THE 4-H OFFICE COMMUNICATE WITH YOU?

weekly update emails, monthly 4-H Focus, County 4-H webpage & Facebook.

WEEKLY EMAILS: 4-H Weekly Update

These are sent weekly, typically every Friday, to the primary and secondary emails on the 4-H Connect account.

4-H FOCUS:

Multi-page newsletter that will be published on the county 4-H webpage and emailed the last week of each month.

Be sure to keep your 4-H Connect profile up-to-date so that you don't miss any important news!!!

TEXAS 4-H ONLINE: <https://v2.4honline.com/#/user/sign-in>
MONTGOMERY COUNTY 4-H WEBSITE: <http://agrilife.org/montgomery4h/>
DISTRICT 9 4-H: <https://d94-h.tamu.edu/>



For my club, my community, my country, and my world.

PICK YOUR PROJECT

You can participate in any 4-H project by being a part of any of our County

Community 4-H clubs. Just because a club does not currently have active members in a specific project area does not mean that no one will get interested in it, especially if you are willing to lead.



4-H Explore Guides

Each guide has been developed to support volunteers, Agents, and even 4-H members in leading project experiences. Check out the available project guides to get a better understanding of what a specific project is.

<https://texas4-h.tamu.edu/resources/>

I enrolled, now what can I do?

- * Your club holds “business” meetings once a month starting in September.
- * Your club might host project meetings, practices, and/or community service events.
- * All 4-Hers, regardless of what club or clubs you have selected, may participate in the county-wide offerings. Those are held here at the office or next door in the Thomas LeRoy Education Bldg. and require a simple RSVP, which usually can be found on the website’s RSVP hub. All of these projects will hold an initial meeting in September: STEM, Fashion & Interior Design, Food & Nutrition, Junior Master Gardener, Photography, Horse Judging, and Robotics.



Fall STEM Nights

Tues, Sept. 24*

Tues, Oct. 29

Thurs, Nov. 21

Thurs, Dec. 29



*Also Intro to Robotics



Level One Group Study

1st Saturday of the month starting Sept. 7 @ 2pm.



Food & Nutrition Nights

Thurs, Sept. 19

Thurs, Oct. 17

Thurs, Nov. 14

Fri, Dec. 20



Fashion & Interior Design

Sunday afternoons 2-4pm

Sept. 22

Oct. 20

Nov. 10

Spring dates also available



Photography

Basics 9/28 9am-12pm

Photography Judging
2/22 2-5pm



Quiz Bowl

Tuesday, October 1

6:30pm



Montgomery County Horsemanship Team

Meets the 2nd Tuesday of the month at 6:30pm at the Extension Office.

1st meeting September 10, 2024

Horse Judging

Love horses? Would you like to study and learn about horses without having to own one?

Join us for horse judging. 9/19, 9/30, 10/7, 11/11. 12/2, 1/7, 2/3, 3/3, and 4/7 at the Extension office at 6:30pm.

Dog Project

Beginner information meeting September 12, 6:30pm at the Extension Office

Participants will learn about dog care and training. Dogs can be purebred or mixed breed.

They must be up to date on vaccinations. Beginners classes work on basic obedience.

You must attend a 4 week course beginning September 16th from 6-7 and ending October 7. Beginners will be evaluated at the end of the 4 weeks before being integrated into the main group. Participants will learn Obedience, Rally, and Showmanship/Conformation.

There will be several opportunities throughout the year to enter shows and test your skills.



Pecans

It's that time of year again.

This is the major source of income for the Montgomery County 4-H program. These funds go directly back to you in the form of educational programs, registration fees, and equipment and curriculum.

THE MORE YOU SELL, THE MORE YOU HAVE!!

**Members need to pick up their fundraiser packet at their September club meeting from the club's pecan leader.



September - October is your time to sell pecans. ALL orders will be due back to your club's pecan leader at your October club meeting unless your pecan leader has set up an alternate date/time.

**NO orders are to be turned directly in to the 4-H office.

ALL orders must be given to the club's pecan leader!!

Once your club's order is turned into the 4-H Office, pre-sale orders cannot be added. Any orders after this will be late pre-sale at the increased price and turned in at pecan pickup.

Pre-Sale: \$12.00/lb 1 lb packages halves or pieces
 Post Pre-Sale: \$12.50/lb 1 lb packages halves or pieces





SPRING MAJOR SHOW VALIDATION ORDERS

All order forms are located on the 4-H webpage:

<https://agriflife.org/montgomery4h/livestock/>

Livestock Validation refers to the multi-step process including ordering tags, attending validation, and submitting a show entry if you intend to show at any of the Major shows.

LAMB & GOAT Validation

TLBA tags must be in lambs Ears before it can be marked on the validation form.

Cost: \$27 per tag LATE orders due by 10/10/2023

VALIDATION

Date: October 28, 2024

Time: 4:00-7:00pm

Location: The Montgomery County Fairgrounds

HEIFER Validation

If you have not validated your heifer before, or if the heifer has been validated but has changed ownership, registration papers must be in the exhibitor's name. 4-H members should bring the papers to the 4-H Office prior to validation so that they can be scanned.

Cost: \$30 per tag LATE Orders Due by: 10/10/2023

VALIDATION

Date: October 29, 2024

Time: 4:00-7:00pm

Location: The Montgomery County Fairgrounds

SWINE Validation

Purebred Gilts must be validated

Cost: \$17 per tag Orders due by: 9/19/2024

Cost: \$20 per tag LATE Orders due by: 10/10/2024

VALIDATION

Date: November 19, 2024

Time: 4:00-7:00pm

Location: The Montgomery County Fairgrounds

Spring 2024 Major Show Entries

Entry Day: November 3rd from 3-5PM or November 4th from 5-7PM

Location: The Extension Office

Sign up for a time on the Sign-Up Genius link that will be emailed.

Heifers and Market Animals must be validated to be eligible.

If you plan on competing in any of the above listed shows livestock and non-livestock, you must complete an entry on one of those days.

What to bring to entry night to complete & submit an entry:

- Parent
- Method of payment (cash or check)
- Heifer entries must bring registration papers
- Pure bred Gilts must bring papers
- 4-H Member
- 4-H Member's Social Security number
- Quality Counts Verification number

**Fort Worth Stock Show,
Houston Livestock Show
and Rodeo, Rodeo Austin,**

Non-livestock contests: Ag Mechanics, Ag Product ID, Horse Judging, Robotics, Wildlife, Consumer Decision Making, Food Challenge, Floriculture, Horse, Sheep, Swine, and Beef Skill-A-Thons, Livestock, Meat, Poultry, Dairy, and Goat Judging, Livestock Quiz Bowl, Public Speaking, Photography, Science Fair, Vet Science, Range and Pasture ID, Ranch Poster Contest, Landscape



All Livestock exhibitors are required to complete the education module and test.
Link: <https://www.texaslivestockvalidation.com/qc/qcregister.aspx>

If you changed age divisions, you will need to complete the age appropriate testing. Exhibitors must be verified once as a Junior (grades 3-5), once as an Intermediate (grades 6-8), and once as a Senior (grades 9-12). Don't know your QC#, call the 4-H office.

POULTRY



San Antonio - Houston - Rodeo Austin
BROILER orders
Orders will be due September 17, 2024

Each show will have a separate order. You will be ordering birds for each show and not birds for all 3 shows. Please contact the 4-H office if you need more clarification.

Order forms can be obtained from the 4-H office or online at:
<https://agrilife.org/montgomery4h/livestock/>

Major Show Calf Scramble

If you would like to participate in a Calf Scramble at one of the major livestock shows this Spring, please complete and submit the Major Show Calf Scramble Application.

Applications DUE to the 4-H office by September 17, 2024.

This application will allow us to contact interested parties when the registration forms for each of the shows becomes available.

The application form can be found at: <https://agrilife.org/montgomery4h/livestock/>

MONTGOMERY COUNTY FAIR

April 3- April 12, 2025

www.mcfa.org

- Make sure you have reviewed the rule book for any projects you plan to participate in at the Fair.
- 4-H members are required to attend 50% of their monthly club meetings between September and February. Meeting attendance is required to be from your primary club community meetings. Not from project meetings or a combination of primary and secondary club meetings.
- Academic eligibility will be required to participate. Substitute showmen are not allowed if an exhibitor is ineligible to participate due to grades.

***Jr. Committee Applications due 8/30**

Steer tag-in 9/10

Fair Queen Applications due 10/4

Replacement Heifer tag-in 10/8

Filly & Gelding tag-in 10/15



Rabbit Project Opportunities



Texas ARBA Rabbit Clinic

September 27 from 4-8pm

Montgomery County Fairgrounds

- Showmanship
- Handling/Posing
- Prepping for Shows
- Daily care/food/nutrition
- Contest information and more

Register here:



You don't have to have a rabbit to attend

2024 Texas 4-H Rabbit Extravaganza

9/13-14

Belton, Texas

Rabbit Show, Educational Workshops, Rabbit Photography & Arts Contest, and Youth Skills Contests

For more information visit:

<https://texas4-h.tamu.edu/projects/rabbits>



OPEN HOUSE

Montgomery County Extension office

9020 Airport Rd, Conroe, TX 77303

(936) 539-7822

Sep. 15th
1-5 PM

- Activities
- Ambassadors
- Local Clubs
- Projects



Texas A&M AgriLife Extension provides equal opportunities in its programs and employment to all persons, regardless of race, color, sex, religion, national origin, disability, age, genetic information, veteran status, sexual orientation, or gender identity. The Texas A&M University System, U.S. Department of Agriculture, and the County Commissioners Courts of Texas Cooperating



JOIN US!

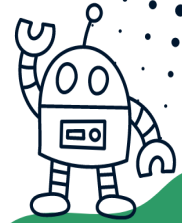
MO CO ROBOS

AG ROBOTICS

3RD- 12TH GRADE

We practice every other Sunday* from 1:30-3:30 at the AgriLife Extension building in Conroe.

For more info, contact Alex Kabli at salexkabli@gmail.com



Quilts of Valor

**Sew Day Kickoff
September 21, 2024
1-5 PM**

**Thomas LeRoy
Education Building**



Unleash your creativity, share your kindness, and honor our Texas veterans and military members through the art of quilting with Quilts of Valor. Quilts of Valor is a nationwide initiative that brings people together to create handcrafted quilts specially designed for our courageous veterans and active-duty military members. Whether you're a seasoned quilter or a beginner eager to learn, the Quilts of Valor program warmly welcomes you. Open to Adult Leaders, County Agents, & Youth. **RSVP on the hub by September 19th.**

COUNTY COUNCIL

County Council meetings are held the **4th Monday of the Month**
7:00 p.m. at the Extension Office
(unless noted otherwise)

Club delegates are strongly encouraged to attend, but are open to everyone!

Meeting Date:
September 23, 2024

Program Activity/Topic:
Cassidy Hope Foundation

Community Service Project:
Texas Litter Control Cleaning Supply Drive

* RSVP for dinner at 6:30pm



District 9 Fall Training and Council Meeting

September 7, 2024 9:30 am check-in

Madisonville High School 811a S. May St., Madisonville, TX

Topics: Parliamentary Procedure, Record Books, Ambassador/Leadership Opportunities, and FCH Project Training
Register in 4honline by September 4th

Cost \$12 pre-registration

2024 TEXAS 4-H JUNIOR MASTER PHOTOGRAPHER WORKSHOPS

Unleash your creativity and dive into the world of photography with the Junior Master Photographer (JMP) program! Join us for two hands-on workshops designed just for you, the budding photographer. You'll learn the secrets of framing, composition, and lighting, and upon completing both workshops, you'll have the opportunity to earn your JMP certification. This certification is your first step towards becoming a prestigious Photography Ambassador.

Open to all intermediate and senior 4-H members, these workshops are the perfect opportunity to explore the exciting world of photography. Sign up on [5/15/24](#). Each workshop is only \$50, and seating is limited to the first 50 registrations. Don't miss this chance to turn your photography passion into a thrilling adventure.

WORKSHOP I - DALLAS

September 21 - 8 AM TO 4:30 PM
Register Aug. 30 to Sept. 15

WORKSHOP II - DALLAS

December 7 - 8 AM to 4:30 PM
Register Nov. 10 - December 1

FOR MORE INFORMATION,
CONTACT D-BRUTON@TAMU.EDU

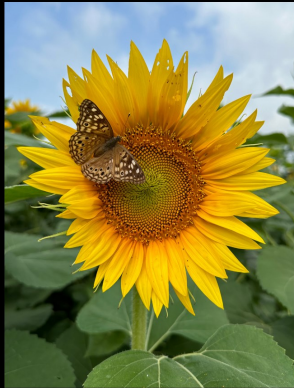


Photo Credit: Mia Meehan, Photography Ambassador

The members of Texas A&M Agrilife will provide equal opportunities in programs and activities, education, and employment to all persons regardless of race, color, sex, religion, national origin, age, disability, genetic information, veteran status, sexual orientation or gender identity and will strive to achieve full and equal employment opportunity throughout Texas A&M Agrilife.

County T-shirt order

Use the QR code to order by **9/22/2024**

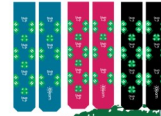


BACK TO SCHOOL SOCK BASH



- ✓ All socks are \$12.95 per pair
- ✓ 100% of profit supports your County 4-H
- ✓ Socks are 100% American-made
- ✓ One size fits most (comfortably to a size 12.5)
- ✓ 76% Cotton, 22% Nylon, 2% Spandex
- ✓ Socks will ship directly to your home

AUGUST 5 - SEPT 15



bloom

TEXAS A&M
AGRI LIFE
EXTENSION

Texas Youth
Hunting Program

9020 Airport Rd. Conroe Tx. 77303

HUNTERS EDUCATION Course

SAT. SEPTEMBER 21ST 2024
9AM-3PM
\$15 to Attend

**GET HUNTERS ED CERTIFIED
BRING YOUR OWN LUNCH**

For youth and adults ages 9 and up!
Sign Up Below!

Open to everyone!
In & out of Montgomery Co. 4-H members & Non 4-H members

Questions? Call or Email:
The Extension Office at (936) 538-8072 or
Instructor:
alysa.sims@ag.tamu.edu

4-H AND FFA WEEKEND IN AGGIELAND

WHERE THE EXPERIENCE BEGINS

September 20 & 21

College Station, Texas

4-H AND FFA WEEKEND IN AGGIELAND
WHERE THE EXPERIENCE BEGINS

TEXAS A&M AGRILIFE EXTENSION | TEXAS A&M UNIVERSITY College of Agriculture & Life Sciences

T-shirt design

Educational day with COALS
Friday, 9/20 | 1-4:15 PM

Tailgate
Saturday, 9/21 | 3-6 PM

Aggie Football Game
Saturday, 9/21 | 6 PM Kickoff

Shirt sales close September 1. Registration closes September 11. Ticket sales for football game close September 19.

UPcoming EVENTS

DATE:	TIME:	LOCATION:	EVENT:
OCTOBER 2022			
• 10/06-10/12			
• 10/2-10/13		All Tractor Supply locations	Tractor Supply Clover Campaign
• 10/12			
• 10/04	by 3pm	Fair Office	Mont. Co. Fair Queen applications DUE
• 10/08	4-7pm	Mont. Co. Fairgrounds	Mont. Co. Fair replacement heifer tag-in
• 10/10	https://agrilife.org/montgomery4h/4-h-validation/		VALIDATION - late orders DUE
• 10/15	4-7pm	Mo. Co. Fairgrounds	Filly & Gelding tag-in
• 10/21	7 pm	Thomas LeRoy Ed. Bldg.	County Council meeting
• 10/28		Mo. Co. Fairgrounds	Major Show Sheep & Goat Validation
		*must have ordered tags and signed up on the	sign up genius link
• 10/29			Major Show Heifer Validation
		*must have ordered UIN's and signed up on the	sign up genius link

ACADEMIC ELIGIBILITY FORMS

Eligibility forms are **REQUIRED** for every event that mandates 4-H membership. This is true whether or not an excused absence is necessary = also true for weekend events. A separate form is needed for each event, but you can make a list and submit at once for all those which fall within a single grading period. **If you have entered a major stock show or, later in the year, the county fair, you will NOT need to make this request. We automatically generate those.**

We are switching over to an easier process last year. Instead of phone calls or emails, place your request online at <https://forms.gle/LadR3ohSycgNs3Gx7> . If you are able to provide an email address for the individual who will be responsible for these on your campus and willing/able to send us a copy of your own signature, we will get this completed digitally. Given enough time, we can mail a hard copy to you or you may come by the office to physically pick it up. Before carrying these to campus, parents must sign the form. Upon completion, those physical copies are returned to students, and you as a family are responsible for returning it to us. Our standard timeline is to have it on file a week before the event or competition. If you are in a time crunch, send a digital copy and follow that with the original. Forms will be generated on Mondays and Thursdays. (There is not an acceptable version of the eligibility form for Montgomery County 4-H'ers posted online anywhere.)

THANK YOU!

In case you didn't know or just need a reminder:
 ALL of our club managers and assistant managers are volunteers.
 They volunteer their personal time to help the 4-H program. Without our volunteers, our program would not be what it is.

If you have special needs for any of the programs offered at the County or District level, please give us a least five days' notice.
 We will make every reasonable effort to accommodate your needs.



Montgomery County 4-H 2024-2025



SUNDAY MONDAY TUESDAY WEDS. THURSDAY FRIDAY SATURDAY

1	2	3	4	5	6	7
	WE WILL BE CLOSED LABOR DAY			4-H Days in Aggieland 4-H Days in Aggieland		District Council Meeting and Fall Training Madisonville High School JMG project meeting 2-4pm, Extension office
8	9	10	11	12	13	14
		MCFE Steer tag-in		Dog project beginner meeting 6:30pm Extension Office		
15	16	17	18	19	20	21
Open House 1- 5pm, Thomas LeRoy Ed. Bldg. Sock fundraiser ends		Broiler Orders due for Spring Major Shows Calf Scramble Application due		Food & Nutrition information night 6:30pm Thomas LeRoy Ed. Bldg. Swine tag orders due	4-H Days in Aggieland	Quilts of Valor Kickoff 1- 5pm, Thomas LeRoy Ed. Bldg. Hunters Ed 9-3pm, Exten- sion Office
22	23	24	25	26	27	28
Fashion & Interior Design meeting 2- 4pm, Tom LeRoy Ed. Bldg. T-shirt orders due	County Council meeting 7pm	STEM & Robot- ics Intro 6:30pm. Thomas LeRoy Ed. Bldg.		Club manager meeting	Rabbit Clinic 4- 8pm, Fair- grounds	Camera Basics 9am-12pm, Thomas LeRoy Ed. Bldg.
29	30					



Montgomery County 4-H 2024-2025

SUNDAY MONDAY TUESDAY WEDNESDAY THURSDAY FRIDAY SATURDAY

	SUNDAY	MONDAY	TUESDAY	WEDNESDAY	THURSDAY	FRIDAY	SATURDAY
			1 Quiz Bowl information night 6:30pm, Thomas LeRoy Ed. Bldg.	2 Tractor Supply Clover Campaign starts	3	4 Fair Queen applications due	5
6		7 	8 MCFE Replacement Heifer tag-in	9	10	11	12
13 Tractor Supply Clover Campaign ends		14	15 MCFE Filly & Gelding tag-in	16	17 Pecan leaders turn in orders to the Extension Office Food & Nutrition night 6:30pm	18	19
20 Fashion & Interior Design Meeting 2-4pm, Extension Office	21 County Council meeting	22	23	24	25	26	
27	28 Lamb & Goat Validation 4-7pm, Fairgrounds	29 Heifer Validation 4-7pm, Fairgrounds STEM night 6:30pm, Thomas LeRoy Ed. Bldg.	30	31			