



January 2024



PHONE: 936-539-7823

FAX: 936-788-8394

ON THE WEB

County 4-H

agrilife.org/montgomery4h

RSVP hub

agrilife.org/montgomery4/rsvp/

Facebook:

[@4HMontgomeryCounty](https://www.facebook.com/4HMontgomeryCounty)

Twitter:

[@MontgomeryCo4H](https://twitter.com/MontgomeryCo4H)

Instagram:

[@Montcotx4H](https://www.instagram.com/Montcotx4H)

County Extension Service

montgomery.agrilife.org

District

d94-h.tamu.edu

State

texas4-h.tamu.edu

Office Hours

8:00am - 12:00pm

1:00pm - 5:00pm

M. Michelle Mihalek
County Extension Agent
4-H Youth Development

Alyssa Sims
County Extension Agent
Urban Youth
Development

Jo Picken
4-H Program Assistant

Tami Ward
4-H Volunteer
Coordinator

Montgomery County 4-H Focus



**The Extension Office will be
CLOSED
Monday, January 1.**

LAST CALL!

Gildan 5000 Heavy Cotton T-Shirt



\$15.91

Did you miss out on the county t-shirt order?

If we have enough interest, we will open a second order. Please complete this form and let us know you would like to order:

<https://forms.gle/z7ndrxK4nsz5Eyav5>

We have only had a few responses and not enough to do an order yet. Please respond by January 8th.



Gildan 5000 Heavy Cotton T-Shirt

\$15.91

COUNTY COUNCIL

County Council meetings are held the
4th Monday of the Month
7:00 p.m. at the Extension Office
(unless noted otherwise)

Club delegates are strongly encouraged to attend, but are open to everyone!



Meeting Date: January 22, 2024

Program Activity/Topic:
Fashion Design

Community Service Project:
Making dog toys for shelters

Please RSVP here for if you will be joining us for the dinner at 6:30pm:
<https://forms.gle/gNY3LSdG2FozTkjE8>

TEXAS 4-H ONLINE: <https://v2.4honline.com/#/user/sign-in>
MONTGOMERY COUNTY 4-H WEBSITE: <http://agrilife.org/montgomery4h/>
DISTRICT 9 4-H: <https://d94-h.tamu.edu/>



For my club, my community, my country, and my world.



LIVESTOCK PROJECTS



Spring 2024 Major Shows:

Fort Worth	Jan. 1-Feb. 03, 2024
San Antonio	Feb. 6-26, 2024
San Angelo	Feb 1-18, 2024
Houston	Feb.27-March 17, 2024
Rodeo Austin	March 8-23, 2024



All Livestock exhibitors are required to complete the education module and test.

Link:

<https://www.texaslivestockvalidation.com/qc/qregister.aspx>

If you changed age divisions, you will need to complete the age appropriate testing. (Juniors 3-5 grade, Intermediate 6-8 grade, and Senior 9-12 grade)

Horse Project



Horse Judging Meeting dates:
1/8, 1/29, 2/5, 3/4, 4/1, 5/6
from 7-8pm at the Extension Office



Montgomery County Adult Horse Committee 2024 Schooling Shows
January 16, 23, and 30 at 6:30pm at the Lone Star Expo Center

Horsemanship club meets the second Tuesday of each month at 6:45 pm at the Extension Office.

9th Annual Angel's Rodeo
February 11, 2024
Montgomery County
Fairgrounds Equestrian Center



2-4:30pm
Volunteers needed.
Please sign up here:

<https://forms.gle/4BefWpuyTobcFEmg9>

Invitational Quiz Bowl competition for Family/Community Health, Horse, and Livestock
January 12, 2024
10:30am at the Walker County Storm Shelter

Invitational Quiz Bowl
Family/Community Health,
Horse, and Livestock



Friday, January 12, 2024
Walker County Storm Shelter
455 State Highway 75N
Huntsville, TX 77320

10:30 a.m. to End
Registrants will be emailed week of event with exact order of game time slots



- Team competition for Junior (3rd - 8th grades) and Senior (9th - 12th grades) Divisions
- 4-person teams only, no exceptions
- Questions taken from the Texas 4-H Reference List (<https://texas4-h.tamu.edu/quiz>)
- 4-H members enter individually through their 4-H Online profile (<https://v2.4honline.com>)
- FFA members enter team by completing form (<https://forms.office.com/rdre1LVZCax>) and mailing a Chapter Check (Texas A&M AgriLife -D-9 4-H at 1470 William D. Fitch Parkway, College Station, TX 77845)
- Registration Deadlines & Fees
 - December 6 - December 20, \$10/4-H member and \$40/FFA Team
 - December 21 - January 8, \$15/4-H member and \$60/FFA Team
 - NO on-site registrations accepted

Prizes awarded to 1- place winning Junior & Senior teams of Family/Community Health, Horse & Livestock

Questions? Contact Kristy Titzman at 936-435-2426 or kkcorley@ag.tamu.edu

Texas A&M AgriLife Extension is an equal opportunity employer and program provider. Texas A&M AgriLife Extension provides equal opportunities in its programs and employment to all persons, regardless of race, color, sex, religion, national origin, disability, age, genetic information, veteran status, sexual orientation, or gender identity. The Texas A&M University System, U.S. Department of Agriculture, and the County Commissioners Courts of Texas Cooperating.

Montgomery County Fair

April 11-21, 2024

Fair Rules to make sure you are aware of:

- **4-H members are required to attend 50% of their monthly club meetings between September and February. Meeting attendance is required to be from your primary club meetings. Not from project meetings or a combination of primary and secondary club meetings.**
- **Academic eligibility will be required to participate. Substitute showmen are not allowed if an exhibitor is ineligible to participate due to grades.**

January 9 Barrow Tag-in 2pm at the Fairgrounds, Sign Up Genius:
<https://www.signupgenius.com/go/70A0A49A8A72FA6F94-46856094-market>

January 16 Breeding beef paper verification 4-7pm at the Fair office Sign Up Genius:
<https://www.signupgenius.com/go/70A0A49A8A72FA6F94-46856423-breeding>

January 22-February 2 Online entries will be open

Be sure to follow the MCFA Facebook page for important information and remind-



NON-LIVESTOCK PROJECTS

January 6, 2024



RSVP on the 4-H website's hub.

Questions:

michele.scaife@ag.tamu.edu



Who? any 4-H member

What? Come join the fun!

When? 1st Saturday, 2 to 4

Where? Montgomery Co AgriLife Extension Office
 9020 Airport Road
 Conroe, TX 77303

Why? "hands-on" group experiences that promote a love of gardening and an appreciation for the environment, plus cultivate the mind



Food Challenge Workshop & HLSR Qualifier

Saturday
Jan. 6th
2024

Montgomery Co.
Extension Office
Tom LeRoy Building

9020 Airport Rd.
Conroe Tx.
77303
**9:00 AM -
12:00 PM**

Are you Interested in the 4-H Food & Nutrition Project?
Come to this Workshop to learn more about all contests & opportunities.

Attendees will participate in a mock Food Challenge Contest. Bring 3-4 team members if interested to compete.

If you entered a team to compete at the Food Challenge Contest at HLSR please bring your team of 3-4 members. The top 2 Junior & Senior teams will advance to Houston.

Everyone is welcome!



Scan QR Code to sign up if interested. Please do, so we have enough supplies!
Contact the Extension Office with Questions:
(936) 539-7822

The members of Texas A&M Agrilife will provide equal opportunities in programs and activities, education, and employment to all persons regardless of race, color, sex, religion, national origin, age, disability, genetic information, veteran status, sexual orientation or gender identity and will strive to achieve full and equal employment opportunity throughout Texas A&M Agrilife.
The Texas A&M University System, U.S. Department of Agriculture, and the County Commissioners Courts of Texas Cooperating

Food Challenge Rules

*Rules are from the State Website

HLSR Qualifying Teams

Teams who are participating in this workshop to qualify for Houston please bring your Supply Box. **Scan the QR Code** to be directed to limitations on your supply box by State 4-H Rules. Qualifying teams will compete in a real contest, being scored on preparation and presentation/ interview.

Workshop Participants

For participants attending the workshop to learn more about food challenge, materials and supplies will be provided for you to use for the Mock Food Challenge Event. Food and Nutrition & Food Challenge Resources, & Hands on experiences will be provided as well to aid in this learning experience. Please Scan the QR Code to gain information about the contest, rules & guidelines to learn more about the contest. This workshop is great practice for those who are interested in competing at the County, District, & State Contest.

State Website
Rules &
Guidelines!



Robotics Contest Practice

January 20, 2024

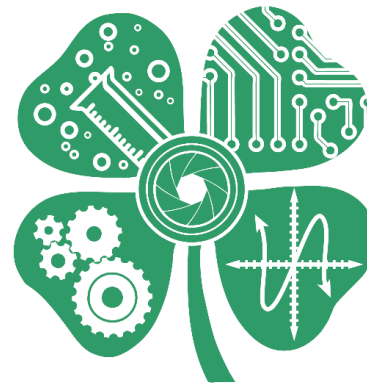
Starting at noon

Thomas LeRoy Education Building

Sign up here:

<https://forms.gle/fHseCkrnJXLS2y637>

***This is for “complete teams only” to qualify for HLSR or teams wanting to practice for other contests**



STEM Nights remaining:

6:30 – 8:00 pm

January 30

February 29

See the *RSVP* hub.



4-H ROUNDUP



What is County, District, & State Roundup???

Competitive events allowing 4-H members the opportunity to develop & practice citizenship and leadership skills. It consists of approximately 50 competitive events.

Each year contests are held throughout the counties, the twelve Texas A&M AgriLife Extension districts, and at the state level hosted in College Station. Contests are held to test a 4-H member's knowledge of the skills they learned.

Check out the State 4-H webpage for more information:
<https://texas4-h.tamu.edu/events/roundup/>

County Roundup - March 19, 2024

County 4-H members have the opportunity to present their projects, completed or not, to judges to receive constructive guidance to improve or better complete their project.

Entries for Big Time in D-9 are done on 4honline and will be due in early April.



District Roundup/Big Time In D9 – April 25-27, 2024

Open to all 4-H members in District 9 (18 counties)

Schedule of events can be found here:

<https://d94-h.tamu.edu/eventsandcontests/bigtime/>

State Roundup/Texas 4-H Roundup – June 3-6, 2024

For Senior (9th – 12th grade) 4-H members only

Qualifying Contest: 4-H members must qualify from District Roundup

Invitational Contest: Any Senior 4-H member can participate



UPcoming EVENTS

DATE:	TIME:	LOCATION:	EVENT:
February 2024			
• 2/2	5:00pm	online	Online Fair entries close
• 2/3		Mo. Co. Fairgrounds	County 4-H Dog Show
• 2/4		Mo. Co. Fairgrounds	Gulf Coast BB/Archery Match
• 2/11	2-4:30pm	Fairgrounds Equestrian Ctr.	Special Angels Rodeo
• 2/19		Extension Office Closed	President's Day
• 2/26	7pm	Thomas LeRoy Ed. Bldg.	County Council Meeting
• 2/29	6:30pm	Thomas LeRoy Ed. Bldg.	STEM night

ACADEMIC ELIGIBILITY FORMS

Eligibility forms are **REQUIRED** for every event that mandates 4-H membership. This is true whether or not an excused absence is necessary = also true for weekend events. A separate form is needed for each event, but you can make a list and submit at once for all those which fall within a single grading period. If you have entered a major stock show or, later in the year, the county fair, you will not need to make this request. We automatically generate those.

We are switching over to an easier process for the 2023-24 year. Instead of phone calls or emails, place your

request online at <https://forms.gle/LadR3ohSycgNs3Gx7> . If you are able to provide an email address for the individual who will be responsible for these on your campus and willing/able to send us a copy of your own signature, we will get this completed digitally. Given enough time, we can mail a hard copy to you or you may come by the office to physically pick it up. Before carrying these to campus, parents must sign the form. Upon completion, those physical copies are returned to students, and you as a family are responsible for

returning it to us. Our standard timeline is to have it on file a week before the event or competition. If you are in a time crunch, send a digital copy and follow that with the original. Forms will be generated on Mondays and Thursdays. (There is not an acceptable version of the eligibility form for Montgomery County 4-H'ers posted online anywhere.)

4-H Member Yard Signs \$5

Buy and pick up at the Extension Office



If you have special needs for any of the programs offered at the County or District level, please give us a least five days' notice. We will make every reasonable effort to accommodate your needs.

JANUARY

Montgomery County 4-H 2023-2024



SUNDAY

MONDAY

TUESDAY

WEDNESDAY

THURSDAY

FRIDAY

SATURDAY

	1	2	3	4	5	6
	 Extension Office CEOSSED		D-9 Archery entries due 4online			JMG meeting 2-4pm Ex. Office Food Challenge Workshop 9-12pm / Beginner Sewing 1-3pm TL Ed. Bldg.
7	8	9	10	11	12	13
		MCF Barrow tag-in starting at 2pm Fairgrounds	State 4-H Dog Validation due 4online		D-9 Invitational Quiz Bowl Contests Huntsville	
14	15	16	17	18	19	20
	Extension Office CEOSSED	MCF Breeding Beef Paper Verification 4-7pm Fair Office Horse School 6:30 LS Expo Center			D-9 Archery Contest Bryan, TX	County Robotics practice 12pm
21	22	23	24	25	26	27
	County Council Meeting 7pm	Horse School 6:30pm Lonestar Expo Center				
28	29	30	31			
		Horse School 6:30pm Lonestar Expo Center STEM night 6:30pm Tom LeRoy Ed. Bldg.				

February

Montgomery County



SUNDAY MONDAY TUESDAY WEDNESDAY THURSDAY FRIDAY SATURDAY

				1	2	3
					Online fair entries close	County 4-H Dog Show
4	5	6	7	8	9	10
Gulf Coast BB/ Archery Match						
11	12	13	14	15	16	17
Special Angels Rodeo 2-4:30pm						
18	19	20	21	22	23	24
	<i>Extension Office CLOSED</i>					
25	26	27	28	29		
	County Council meeting 7pm Thomas LeRoy Ed. Bldg.			STEM night 6:30pm Thomas LeRoy Ed. Bldg.		