

December 2022

# Montgomery County 4-H Focus



*The Extension Office will be CLOSED:*

*Friday, December 23rd & Monday, December 26th*

*The Extension Office will have limited office hours & staff  
December 27th - January 3rd*

## Pecans

Still available at the 4-H office ; Halves & pieces  
Limited quantities for sale until they are gone.  
\$12.50/lb.



## 4 MORE.

The new marketing campaign used across the state of TX in hopes to increase 4-H membership. The campaign challenges each 4-H Members to invite 4 friends to join.

Incentives are given for new members:

1 new member : 4-H More t-shirt

2 new members : Membership refund

3 new members : Leather portfolio

4 new members : Backpack & state recognition

All participants are encouraged to list participation on TX 4-H scholarship applications & record books.

Referrals are tracked through 4honline enrollment.

## 4-H Questions Answered

Why are 4-H member deadlines/due dates sometimes different from an online posted date or FFA date?

Dates that are published on show websites (example Mont. Co Fair website) are the final due date for the 4-H CEA to have all entries/orders submitted.

It is very important that you pay attention to the 4-H due dates and the information our office shares as well as event rule books.

Have a 4-H Question to feature in the 4-H Focus? Send it to [jennifer.derks@ag.tamu.edu](mailto:jennifer.derks@ag.tamu.edu)



**PHONE:** 936-539-7823

**FAX:** 936-788-8394

### ON THE WEB

#### County 4-H

[agrilife.org/  
montgomery4h](http://agrilife.org/montgomery4h)

#### Facebook:

[@4HMontgomeryCounty](https://www.facebook.com/4HMontgomeryCounty)

#### Twitter:

[@MontgomeryCo4H](https://twitter.com/MontgomeryCo4H)

#### Instagram:

[@Montcotx4H](https://www.instagram.com/Montcotx4H)

#### County Extension Service

[montgomery.agrilife.org](http://montgomery.agrilife.org)

#### District

[d94-h.tamu.edu](http://d94-h.tamu.edu)

#### State

[texas4-h.tamu.edu](http://texas4-h.tamu.edu)

#### Office Hours

8:00am - 12:00pm

1:00pm - 5:00pm

#### M. Michelle Mihalek

County Extension Agent  
4-H Youth Development

#### Justin Saenz

County Extension Agent  
4-H Youth Development

#### Jo Picken

4-H Program Assistant

#### Jennifer Derks

4-H Coordinator

I pledge  
my Head to  
clearer  
thinking,

my Heart  
to greater  
loyalty,

my  
Hands to  
larger  
service,

my Health  
to better  
living.



For my club, my community, my  
country, and my world.

### COUNTY COUNCIL

County Council meetings are held the  
**4th Monday of the Month**  
**7:00 p.m. at the Extension Office**  
 (unless noted otherwise)

Club delegates are strongly encouraged to attend,  
 but are open to everyone!

Meeting Date:

\*December 20, 2022

Program Activity/Topic:

Community Service Project:  
 Warm Clothing Drive



### Warm Clothing Drive

Details to come soon



Bring Donations to the 4-H office or to the  
 December Council Meeting.

**\*Note the different date from the normal 4th Monday**



## **NON-LIVESTOCK PROJECTS**



### Natural Resources Photography Contest

The Texas 4-H Natural Resources Photography Contest encourages observation within specific Natural Resources project areas and allows youth to demonstrate skills learned in the area of photography, including the use of photographic equipment and processing of photographs. This contest provides another opportunity to showcase the photographic work of 4-H members in all age divisions.

Participation Eligibility: Any enrolled 4-H member (3rd to 12th grade)

Photo Eligibility: Photo must be taken by participants between the dates of December 1, 2021, and December 15, 2022. Each photo may be submitted only one time and in only one category.

Photos may be submitted only one time and in only one category

Deadline: December 1 -15, 2022

\*For complete Rules, Guidelines, & Category Descriptions,:

[https://texas4-h.tamu.edu/wp-content/uploads/photography\\_state\\_rules\\_2022\\_2023.pdf](https://texas4-h.tamu.edu/wp-content/uploads/photography_state_rules_2022_2023.pdf)

### Texas 4-H Videography Contest

An annual contest that allows youth to demonstrate videography skills and encourages self-expression.

- Eligibility: Intermediate and Senior 4-H Member
- Theme: Promote 4-H
- Entry Fee: \$10 for individuals or \$5 per Team member
- Awards: 1st – \$1500; 2nd – \$1000; 3rd – \$750

\*For complete Rules, Guidelines, & Category Descriptions:

[https://texas4-h.tamu.edu/wp-content/uploads/photography\\_videography\\_22.pdf](https://texas4-h.tamu.edu/wp-content/uploads/photography_videography_22.pdf)

More Stem Projects & Info:  
<https://agrilife.org/montgomery4h/stem/>

# 4-H ROUNDUP

## What is County, District, & State Roundup????

Competitive events allowing 4-H members the opportunity to develop & practice citizenship and leadership skills. It consists of approximately 50 competitive events.

Each year contests are held throughout the counties, the twelve Texas A&M AgriLife Extension districts, and at the state level hosted in College Station.

Contests are held to test a 4-H member's knowledge of the skills they learned.

Check out the State 4-H webpage for more information: <https://texas4-h.tamu.edu/events/roundup/>

### County Roundup - February 21-22, 2023

county 4-H members have the opportunity to present their projects, completed or not, to judges to receive constructive guiding to better complete their project.

### District Roundup/Big Time In D9 – April 27-29, 2023

Open to all 4-H members in District 9 (18 counties)

### State Roundup/Texas 4-H Roundup – June 5-8, 2023

For Senior (9th – 12th grade) 4-H members only

Qualifying Contest: 4-H members must qualify from District Roundup

Invitational Contest: Any Senior 4-H member can participate



## LIVESTOCK PROJECTS

### 2023 SPRING MAJOR SHOWS

Fort Worth	Jan. 13-Feb. 04, 2023
San Angelo	Feb. 2-19, 2023
Texas' Elite	Feb. 10-12, 2023
San Antonio	Feb. 9-26, 2023
Houston	Feb.28-March 19, 2023
Rodeo Austin	March 3-25, 2023



### HORSE PROJECT

#### Horse Judging

No horse, No problem!! Learn to be the judge of a horse show. You will learn horse anatomy, characteristics, and understanding of scoring a horse in competition.

If you are interested, contact:

Judy Skelton -- [jjskelton@yahoo.com](mailto:jjskelton@yahoo.com)

#### Horse Clinics

Only clinics will be offered this year to learn new skills and hone existing skills.

To qualify for the **County 4-H Horse Show** you must participate in at least 2 clinics. Be certain to sign the attendance sheet.

Clinic & Practice Shows <https://agrilife.org/montgomery4h/hcr/>

December 13, 2022

January 15, 2023

\*complete show list available at the above website. Registration required



All Livestock exhibitors are required to complete the education module and test.

Link:

<https://www.texaslivestockvalidation.com/qc/qcregister.aspx>

If you changed age divisions, you will need to complete the age appropriate testing.

Don't know your QC#, call the 4-H office.

## Montgomery County Fair

March 24 - April 2, 2023

[www.mcfa.org](http://www.mcfa.org)

Fair Rules to make sure you are aware of:

- 4-H members are required to attend 50% of their monthly club meetings between September and February. Meeting attendance is required to be from your primary club community meetings. Not from project meetings or a combination of primary and secondary club meetings.
- Academic eligibility will be required to participate. Substitute showmen are not allowed if an exhibitor is ineligible to participate due to grades.

December 6 Market Goat & Lamb Tag-In - Sign up at below links. Be sure to bring your required pictures.

- Lamb – <https://www.signupgenius.com/go/70A0A49A8A72FA6F94-mcfa10>
- Goat – <https://www.signupgenius.com/go/70A0A49A8A72FA6F94-mcfa9>

January 10 Barrow Tag In

Be Sure to Follow the MCFA Facebook page. They share lots of info here.

## New Contests

Ag Prepared Public Speaking Contest and a Discussion Meet Contest. Enter each contest separately; Contestants may choose to enter one or both. Contestants do not have to be part of 4-H or FFA to enter, but must be a student of a Montgomery County school district.

**Entries are open!**

For all the details, forms and rules, please visit

<https://mcfa.org/events/ag-prepared-public-speaking-discussion-meet/>

**MONTGOMERY COUNTY FAIR & RODEO**

**Public Speaking**  
CONTEST

**Discussion Meet**  
CONTEST

TWO CONTESTS  
ONE EVENT

**April 1, 2023**  
UNITUS MEDICARE EXHIBIT BUILDING

**Entry Fee**  
\$20 for each contest  
Made payable to MCFA online or in person or by mail

**Age Divisions**  
Junior Division: 3rd-8th Grade  
Senior Division: 9th-12th Grade

**1st Place:** Buckle, Cash prize  
**2nd Place:** Buckle, Cash prize  
**3rd Place:** Cash prize

Entries must be submitted via the online registration, or by emailing the PDF entry form to [amber@mcfa.org](mailto:amber@mcfa.org).  
Please make your payment at [mcfa.org/make-a-payment](https://mcfa.org/make-a-payment)

[mcfa.org/events/contests](https://mcfa.org/events/contests)

# Project Highlight



Part of the 4-H pledge is **"Hands To Larger Service"** a commitment to make our communities a better place to live.

In 4-H, that means giving back to your town through community service! All 4-H members are encouraged to do community service projects. Find a need in your community and come up with a creative solution for how you can help!

How to find a project or person in your community that needs help:

- Ask club members and families if they know of something
- Ask other community groups
- Talk with community officials
- Find out what types of projects have and have not been done recently
- Ask your county extension office

**Montgomery County Community Service Opportunities**

County Council monthly community service projects.

Club community service projects

Create an individual project

*Helping your Community can be big or small. Be Creative!*

## 4-H Explore Guides

Each guide has been developed to support volunteers, Agents, and even 4-H members in leading project experiences.

Check out the available project guides to get a better understanding of what a specific project is.

<https://texas4-h.tamu.edu/resources/>



## Swine Project

With this project you will experience the full process of selecting, feeding, breeding, and promoting swine. Through various events you will have the opportunity to learn public speaking, leadership, and community service participation related to the swine project.

*What can I learn?*

- ⇒ The selection criteria of a market barrow or breeding gilt
- ⇒ Various breeds
- ⇒ When & where to select a barrow or gilt
- ⇒ Learn to select a market barrow or breeding gilt for livestock shows

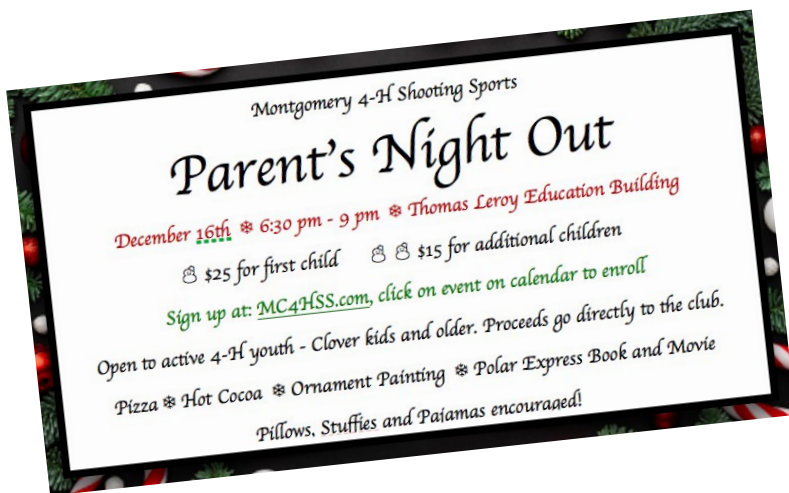
## PICK YOUR PROJECT

You can participate in any 4-H project by being a part of any of our County Community 4-H clubs. Just because a club does not currently have active members in a specific project area; it doesn't mean that no one will get interested in it.



# UPcoming EVENTS

DATE:	TIME:	LOCATION:	EVENT:
<b>JANUARY 2023</b>			
• 1/02	Extension Office Closed		
• 1/07			County 4-H Robotics
• 1/10		Mont. Co. Fair	Barrow Tag In
• 1/14		The Extension Office	County 4-H food challenge
• 1/15			Horse Project Clinic
• 1/16	Extension Office Closed		
• 1/17		Mont. Co. Fair Office	Breeding Beef papers Due
• 1/23		www.mcfa.org	Mont. Co. Fair Online Entry System opens
• 1/31		Extension Office	Consumer Decision Workshop



## ACADEMIC ELIGIBILITY FORMS

**Eligibility Forms (No Pass, No Play) are ultimately the member's responsibility to complete. These forms are REQUIRED to be completed by every 4-H member participating in an event that requires 4-H membership.**

- Forms are required regardless if school is missed or not.  
Yes, if participation is on a Saturday or Sunday a form is required.
- Forms are to be signed by the parent and then sent to the school for eligibility approval prior to any 4-H member participating in any competitive 4-H activity.
- A separate form is required for each competitive event/activity.
- Multiple forms can be requested for all events that occur during the current school grading period.
- Forms can be picked up or mailed if time is permitted.
- Forms are required to be returned to the 4-H office prior to participation.

Should any special arrangements be needed, it must be communicated and approved with the 4-H office.  
This includes picking up &/or returning forms.

These forms come from the 4-H office. **They cannot be printed or emailed.**  
Request your form and then make arrangements to pick it up. USPS mail is an option if time allows.

If you have special needs for any of the programs offered at the County or District level, please give us a 'least five days' notice.  
We will make every reasonable effort to accommodate your needs.