


 TEXAS A&M  
FOREST SERVICE




**Texas A&M Forest Service Advocacy Presentation**  
Melanie Karns and Gretchen Riley


1

**Why & How TFS Was Formed**



In 1898, W. Goodrich Jones made a horseback survey of East Texas. He issued a bleak report of his findings, titled "*Texas Timber Resources*."



 TEXAS A&M  
FOREST SERVICE

2

## Why & How TFS Was Formed



- In 1914, Jones organized the **Texas Forestry Association** - sole purpose was to lobby for a state forestry agency
- Representative Burges of El Paso introduced the forestry bill in the Texas House
- Bill passed the House during the 34<sup>th</sup> session - Initial budget was \$10,000



3

## TFS Background



- Established in 1915
- “Assume direction of all forest interests and all matters pertaining to forestry within the jurisdiction of the state”*
- First state forestry agency placed within the Land Grant System
  - Agency Director is the State Forester
  - Appointed by TAMU Board of Regents



**Thomas G. Boggus**  
State Forester and Director

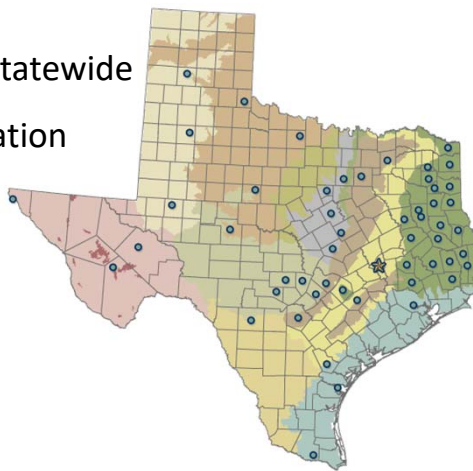


4

## Where We Work



- 500 employees statewide
- HQ in College Station
- 5 State Forests
- Seedling nursery



5

## TFS Role in Texas A&M System?



Teaching   Research   Extension   Service

*Texas A&M Forest Service provides statewide leadership to assure the state's trees, forests and related natural resources are protected and sustained for the benefit of all.*



6



7



8

# What We Do

The diagram features a purple triangular roof with the Texas A&M Forest Service logo at its peak. Three white pillars support the roof, labeled vertically as 'CONSERVE', 'PROTECT', and 'LEAD'. These pillars rest on a grey base labeled 'SERVICE'. To the left of the diagram is a vertical image of a misty forest.

TEXAS A&M FOREST SERVICE

9

# CONSERVE

A collage of four images illustrating conservation. The top-left image shows a field of purple and orange wildflowers under a cloudy sky. The top-right image shows a large, spreading live oak tree in a green field. The bottom-left image shows a tall pine forest with a field of brown grass in the foreground. The bottom-right image shows a rural landscape with a white house and a red barn in the distance under a blue sky.

TEXAS A&M FOREST SERVICE

10

## Economic Impact of Forest Sector

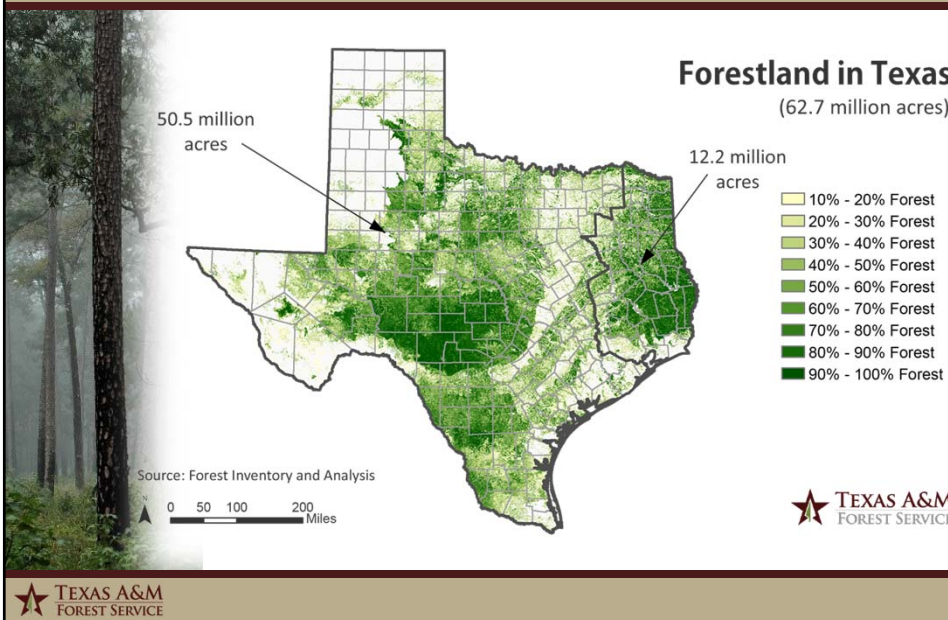


- \$18.1 billion direct industry output
- 64,000 direct jobs with payroll of \$3.6 billion
- Timber is among Texas' top 10 most valuable agricultural products
- For 33 of the 43 East Texas counties, forest sector is in the top 5 employers



11

## Forest Resources In Texas



12

## How We Do It

### Collect and Share Information

#### Forest Inventory and Analysis

- Status and condition of the state's forest resource

#### Environmental and Forest Health

- Water Resources / Ecosystem Services
- Stewardship
- Insect, disease, and invasive species

#### Fire weather, fuels, drought index

- Wildfire Risk
- Partner with TAMU Agrilife Spatial Sciences Laboratory



13



14

## PROTECT



TEXAS A&M  
FOREST SERVICE

15

## How We Do It

### Build Capacity

#### Education / Outreach

- Landowners, Contractors, Emergency Responders, Homeowners, General Public, Youth

#### Technical Assistance / Training

- Site Visits
- Training Workshops
- Research Cooperatives (Tree Improvement, Forest Pest)
- Innovative Web Applications

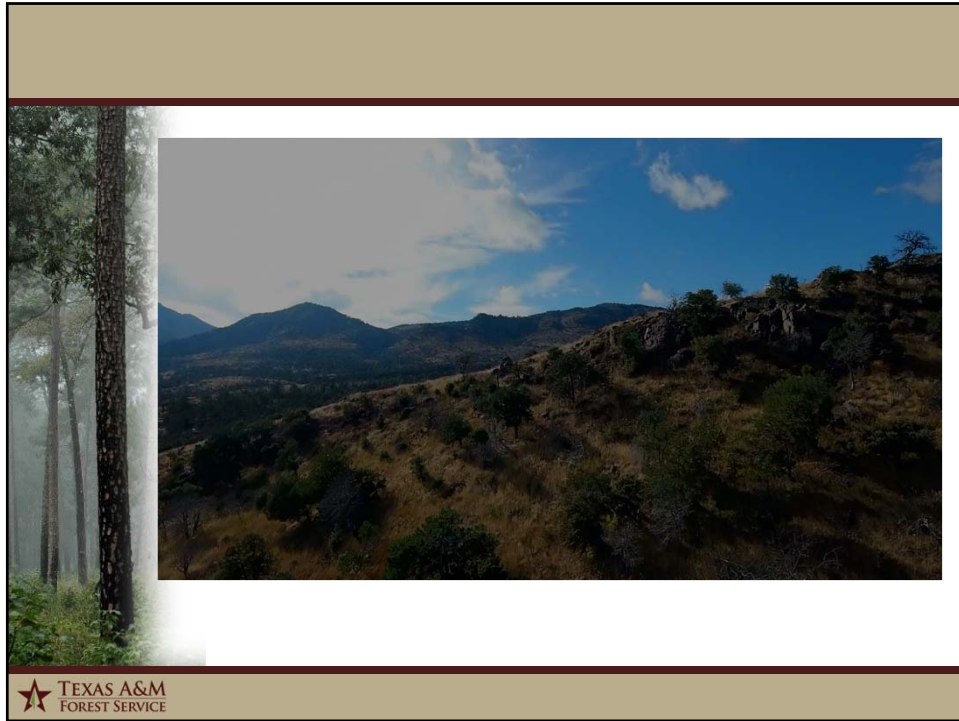
#### Financial Assistance

- Fire Department Assistance (Grants, Equipment, Training)
- Forest Restoration (management practices, conservation easement, prescribed fire, insect and disease control)

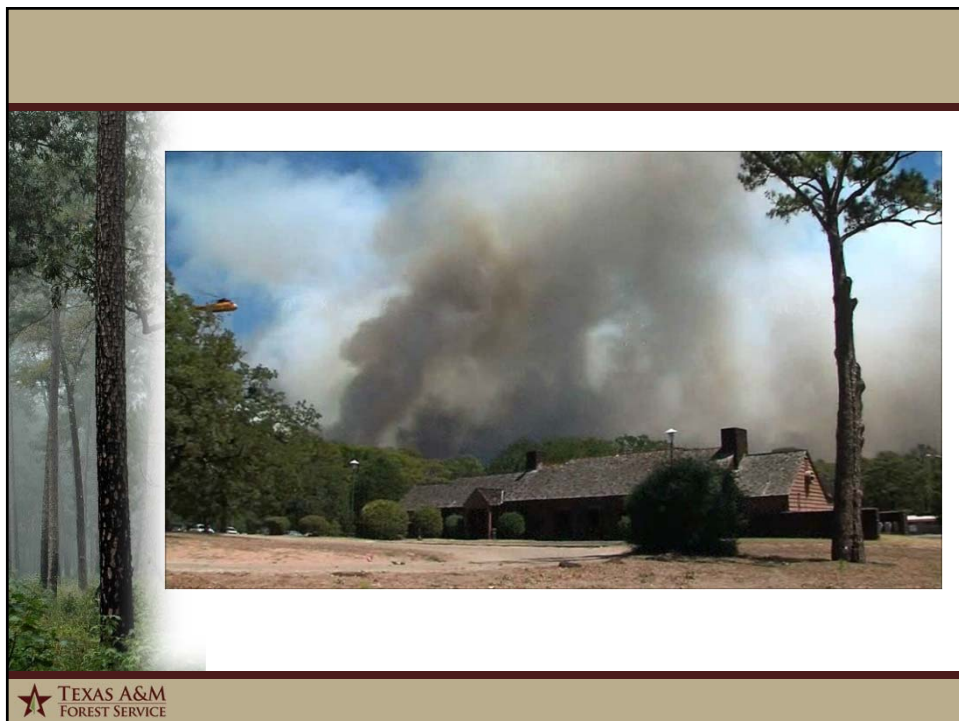
TEXAS A&M  
FOREST SERVICE

16





17



18



19



20

## How We Do It



### Provide Leadership

**Coordination**

- Professional Organizations
- Partnerships, such as...

**Partnerships**

- TX Wildfire Protection Plan
- Cohesive Strategy
- TPWD & USFS Burn Exchanges
- TIFMAS
- SouthWRAP
- Urban FIA – leading the nation
- Forest Products Laboratory
- Southern Forest Land Assessment / State Assessment
- Texas Forest Literacy Plan



21

## How We Do It



### Provide Leadership

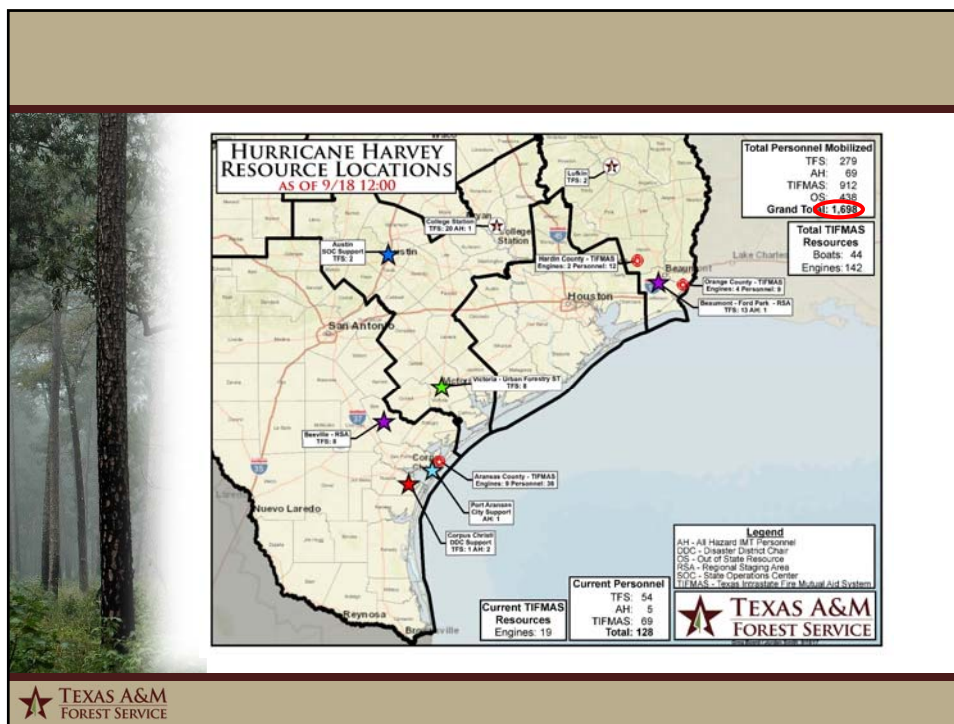
Leadership Life Cycle



*Harvey*



22



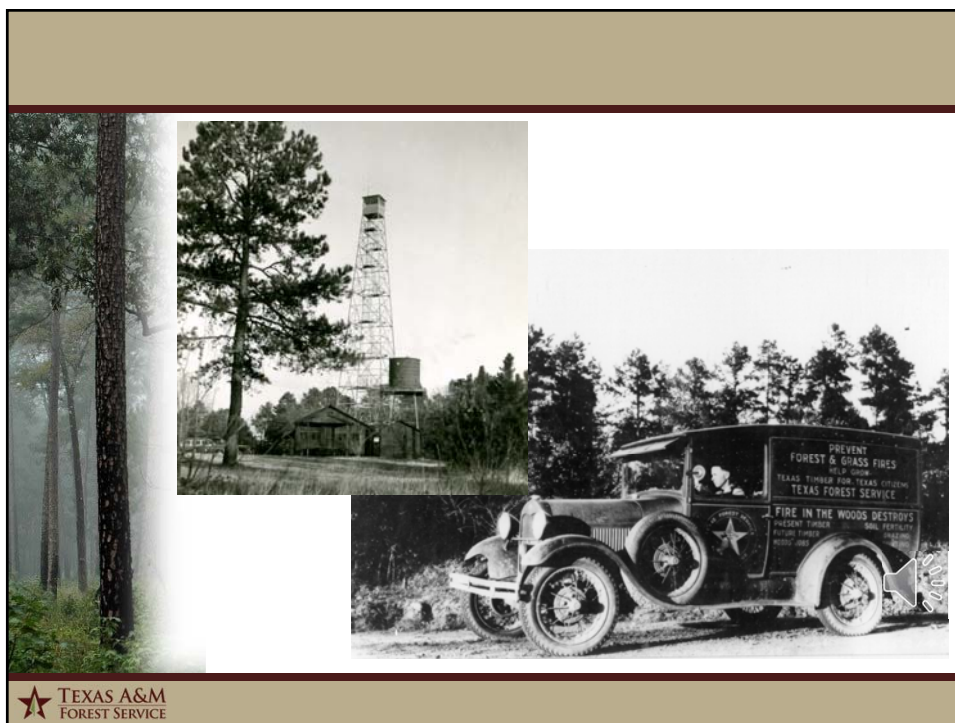
23



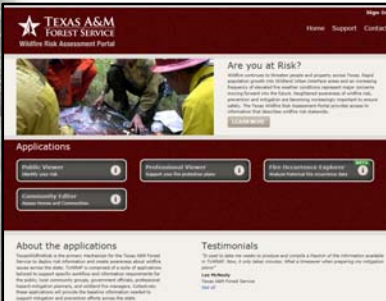
24



25




26



The screenshot shows the Texas Wildfire Risk Assessment Portal. It features a header with the Texas A&M Forest Service logo and navigation links. The main content area includes a section titled "Are you at Risk?" with a video thumbnail, followed by "Applications" for Public, Professional, and Field Assessments, and "About the applications" and "Testimonials" sections.

**Texas Wildfire Risk Assessment Portal**

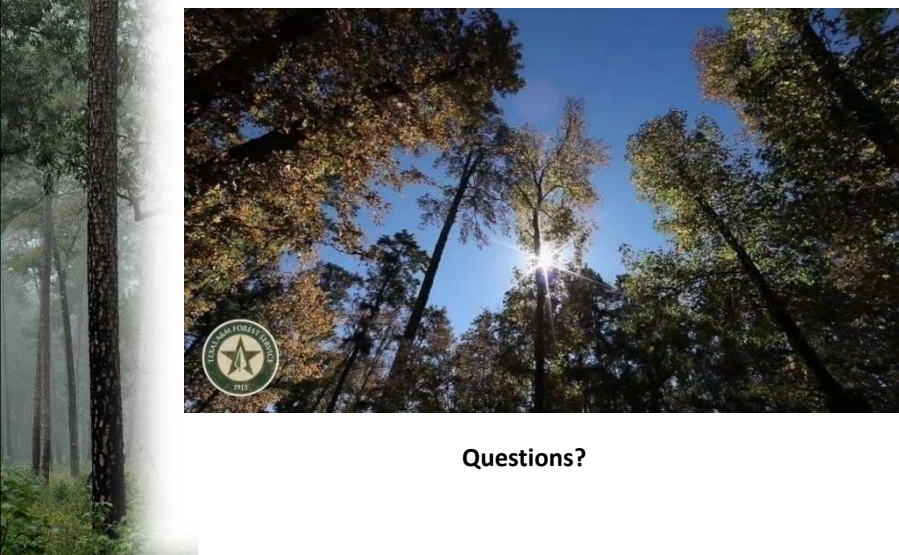


The screenshot shows the Texas Forest Information Portal. It features a header with the Texas A&M Forest Service logo and navigation links. The main content area includes a grid of featured articles such as "Map My Property", "Big Tree Fragility", "Understand Decision Support", "Plan My Land Operations", "My City's Trees", and "Trees Connect Mobile App".

**Texas Forest Information Portal**

**TEXAS A&M FOREST SERVICE**

27



A photograph of a forest landscape with tall trees and sunlight filtering through the canopy. The Texas A&M Forest Service logo is overlaid in the bottom left corner of the image.

**Questions?**

**TEXAS A&M FOREST SERVICE**

28