



Harris County 4-H

# Clover Chronicles

December 2021



## 4-H Tech Changemakers

On November 10th, Jasmine Little and Zoe Starr, our Harris County 4-H Tech Changemakers, provided a workshop to 6 adults during the "Seas the Day" Event held at the Houston Prairie View A&M Campus.

Jasmine and Zoe, from Two Hearts 4-H Club, guided participants through setting up email, using QR codes, and finding information safely through search engines. Awesome job to these two 4-H members for serving their community!



## Important Dates:

### Texas 4-H Jerky Jackpot

Taking place now!  
See flier below

### Southern Classic Youth Livestock Project Experience

Takes place December 12-14th  
Register open from now until December 12th  
See flier below

### 4-H Healthy Holidays

Takes place on December 18th  
Register by December 16th  
See flier below

### Invitational Quiz Bowl

Livestock, Horse, & Family Community Health  
Takes place on January 14th  
Register between December 15th and January 6th  
See flier below

### Texas Corn Producers Scholarship

\$1,000 scholarship available for high school seniors  
Applications currently open, closes on January 31st  
See flier below

### Natural Resources Project Leader Training

Takes place on January 29th  
Registration opens December 10th, closes January 14th  
See flier below

### 4-H Harris County Contests

Register using the link and contest details in article below!  
Registration is open now!  
Contest dates range between January 22 and February 16.

### Stock Show Registrations

Keep an eye on your email for Stock Show registration updates!

**Questions? Reach out to the 4-H Team! (Page 7)**



Harris County 4-H



# HEALTHY HOLIDAYS

## FOOD & NUTRITION TRAINING

We invite you to join us to learn about:  
The Program & Future Opportunities  
MyPlate, Food Safety, Measuring, & More!

Then, join us in participating in a fun  
HOLIDAY FOOD CHALLENGE!

TRINI MENDENHALL  
COMMUNITY CENTER

1414 WIRT RD, HOUSTON, TX 77055  
DECEMBER 18, 2021 8:30AM-12:00PM

Attire: Casual/Holiday Themed  
Bring Canned Foods or Non-  
Perishable Items.  
Each item = 1 entry towards a  
Door Prize Drawing!

Cost: \$5 per person  
Register online at  
<https://www.eventbrite.com/e/healthy-holidays-2021-tickets-215747766377>

This is great  
prep for  
Food Show  
&  
Food Challenge  
contests!

Have a  
friend that is  
not currently in  
4-H register and  
attend with you,  
get 3 extra entries  
for door prize.



# HARRIS COUNTY 4-H COUNTY ROUND-UP 2021-2022

Click each contest title to learn more!

Contest location will be shared by December 15th. (Harris County Precinct 4)

## JANUARY 22, 2022

Register by January 7th

[Food Show](#)

[Food Challenge](#)

[Robotics Challenge](#)

[Public Speaking / Educational Presentation](#)



## JANUARY 29, 2022

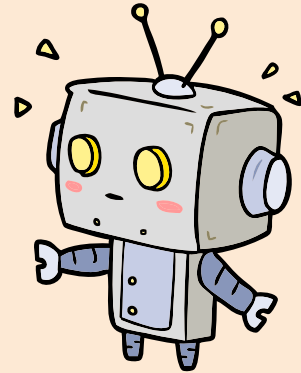
Register by January 7th

[Consumer Decision Making](#)

[Share the Fun](#)

[Fashion Show](#)

[Duds to Dazzles](#)



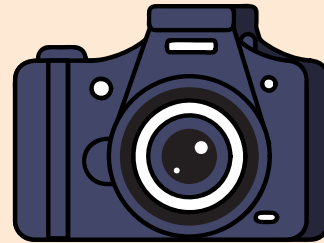
## VIRTUAL SUBMISSIONS

(Submission dates vary)

[Fashion Storyboard](#)

[Photography](#)

[Photography Judging](#)



**\*Some contests are mandatory to attend if you plan on going to Big Time in D-9 or Houston Rodeo. Make sure to click the link and read each description!\***



# Upcoming Events





**TEXAS 4-H PRESENTS:  
NATURAL RESOURCES  
PROJECT LEADER TRAINING**

*Please Join Us*  
**8:00 AM to 4:30 PM  
Saturday, January 29, 2022  
in College Station**


**This statewide leader training is open to enrolled 4-H adult volunteers and enrolled senior 4-H members (9th-12th grade)**

**Training will include the following project areas:**  
Entomology, Forestry, Outdoor Education & Living Skills, Range Science, and Wildlife & Fisheries

**Registration:**  
\$20 per person (includes lunch & refreshments)  
**December 10, 2021 to January 14, 2022**  
via 4-H Online

**Questions?**  
Please Contact Larry Hysmith at [lhysmith@tamu.edu](mailto:lhysmith@tamu.edu)

TEXAS A&M AGRILIFE EXTENSION IS AN EQUAL OPPORTUNITY EMPLOYER AND PROGRAM PROVIDER.  
THE TEXAS A&M UNIVERSITY SYSTEM, U.S. DEPARTMENT OF AGRICULTURE, AND THE COUNTY COMMISSIONERS COURTS OF TEXAS COOPERATING



Get Involved Growing Opportunities Education News About Us

## Scholarships

When students join the Texas Corn Producers Association (TCPA), they gain access to a number of benefits and a great resumé booster. Plus, TCPA membership makes for scholarships at both the state and national levels. Student membership is a \$20 investment with the potential of great returns for students — [Join today!](#)

### Texas Corn Producers Association Scholarships

TCPA is proud to sponsor four scholarships for its student members. Each year TCPA awards two \$1,000 scholarships in each of the following categories:

- High school senior as of January 1, 2022
- Current college or university undergraduate student as of January 1, 2022

Applications open Oct. 1, 2021, and close January 31, 2022.

### Eligibility Requirements

- Must attend/plan to attend a Texas college or university full time
- Current TCPA and TCPB directors' children are not eligible

Applications are due January 31, 2022! Select "Texas Corn Producers Association Scholarships" to ensure you apply for level scholarships.

[Apply Now!](#)



**A Delicious Investment  
In your LOCAL 4-H  
County Programs**



"The programs 4-H provided during my younger years helped guide me to the career I have today, I am thrilled to be a part of the support the Foundation will be able to offer when you purchase my jerky."

*Bob Tallman*  
Bob Tallman  
Pro Rodeo Legend  
12-time PRCA Announcer of the Year

**Choose From Four Great Flavors**

- Peppered Hickory
- Sweet Smoked
- Brown Sugar BBQ
- Valle Sagrado Chile



The Texas 4-H Foundation has teamed up with legendary rodeo announcer Bob Tallman to sell his Authentic Cowboy Beef Jerky. The proceeds will help fund club projects right here in Tarrant County.

Bob Tallman's jerky comes from high-quality, grass-fed, Texas-raised beef. The jerky comes in four delicious flavors. You can enjoy it sweet, peppery, smoky, or spicy. Each package is just \$10.00. Scan the QR Code to place your order today!

Be sure to mention "HARRIS COUNTY" when ordering so that 100% of the proceeds go directly to our Harris County 4-H program!

Thank you for your support!




## What is Southern Classic?

**An educational opportunity for new 4-H/FFA families participating in livestock projects to teach the basic principals of livestock management.**

Open to youth 3rd-12th grades



**December 10-12, 2021**  
Brazos County Expo Center  
5827 Leonard Road, Bryan, TX 77807

Friday	Saturday	Sunday
4:00-7:00 PM Barns Open/ Check-in	7:00 AM Check-in 9:30 AM Speed Judging/ Breakout Sessions	Prospect Shows (You <b>MUST</b> attend Saturday to participate)




### Registration

**Early Bird Registration.....\$30/family**  
By December 6, 2021

**Registration..... \$40/family**  
December 7-12, 2021  
(Register On-site)

**To register and/or for more information visit:**  
<https://walker.agrilife.org/4h/southern-classic-registration/>

Texas A&M AgriLife Extension provides equal opportunities in its programs and employment to all persons, regardless of race, color, sex, religion, national origin, disability, age, genetic information, veteran status, sexual orientation, or gender identity.

## Upcoming Events

**Christmas Card Sell**  
Congratulations to Zoe with Two Hearts 4-H on winning the Texas 4-H Foundation Christmas Card Design Contest for the Junior division! If you are interested in purchasing 4-H Christmas Cards, please click the link below.

<http://weblink.donorperfect.com/2021christmascards>.



### District 9 Archery

January 21st and 22nd

Will be held in Bryan at Live Oak Archery

Entries will open December 15th and close on January 5th

They are in the process of moving to a much larger facility. Once we have the address an update will be provided.

Keep an eye on your email for updates!



### Invitational Quiz Bowl Livestock, Horse, and Family/Community Health



Friday  
January 14, 2022

Walker County Storm Shelter  
455 State Highway 75N  
Huntsville, TX 77320

1:00 p.m. to End.

Registrants will be emailed week of event with exact order of game time slots



- Questions taken from the Texas 4-H Reference List (<https://texas4-h.tamu.edu/quiz/>)
  - ✓ Junior (3<sup>rd</sup> - 8<sup>th</sup> grades) and Senior (9<sup>th</sup> - 12<sup>th</sup> grades) Divisions (Reminder: 4 member teams)
- Cost \$10/kid, register through 4-H Online (<https://texas.4honline.com>) by Thursday, January 6
  - ✓ Registration opens December 15th
  - ✓ FFA Members: Team entry of \$40 – Complete the form at the following link and mail a Chapter Check.  
Check – Texas A&M AgriLife -D-94-H at 1470 William D. Fitch Parkway, College Station, TX 77845 - <https://tinyurl.com/r5zkwxyc>  
4-H Members: Enter through 4-H Connect using your 4-H enrollment account (Individual registration)
- Late entries accepted until January 11<sup>th</sup> at \$15/kid – 4-H and \$60/Team
- **NO on-site registration accepted**

Prizes awarded to 1<sup>st</sup> place winning Junior & Senior teams of Livestock, Horse, & Family/Community Health

Questions? Contact Kristy Titzman at 936-435-2426 or [kkcorley@ag.tamu.edu](mailto:kkcorley@ag.tamu.edu)

---

## 4-H Senior Scholarship Opportunities

---

**Did you miss the D-9 Scholarship Training?**

**Fear not! You can use the link below to access the recording. Please reach out to the Harris County 4-H Team if you have any questions.**

**<https://d94-h.tamu.edu/2017-scholarship-information/>**

---

## Upcoming Events Hosted By Your Club?

---

**Is your club hosting an upcoming event? Would you like to invite 4-H members from across the county to participate in this opportunity? Please email event details to [jaden.kelly@ag.tamu.edu](mailto:jaden.kelly@ag.tamu.edu) so that we can spread the word in our upcoming newsletters and emails!**

---

## Festive Feast Contest Winner! - Zoe McClendon

---

In my family I am known for making the best dessert for every festivity. This year for Thanksgiving I made a peach cobbler! This peach cobbler is the perfect addition to your holiday menu! It is a quick and simple classic that relieves yourself from the hassle of making an amazing dessert along with holiday prep. Hope you like it ;)

- Zoe McClendon  
MacGregor Metropolitan 4-H

### Best Peach Cobbler Ever Ingredients:

- 2 cans of Sliced Peaches (15 oz)
- 1 cup of White Sugar
- 1 cup of Brown Sugar
- 1 tsp Ground Cinnamon
- 1 tsp Nutmeg
- 1 stick Butter
- 2 Boxes of Ready Made Pie Crust
- Sprinkle of Cornstarch
- 2 tbsp of vanilla



---

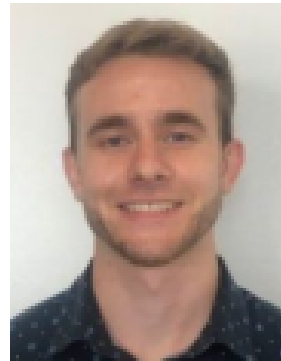
# Meet the 4-H Harris County Team!

---



**Jaden Kelly**  
4-H and Youth Development County Extension Agent  
email: [jaden.kelly@ag.tamu.edu](mailto:jaden.kelly@ag.tamu.edu)  
Favorite 4-H Project: STEM or Wildlife & Fisheries

---



---

**Zachary Giblin**  
Urban Youth Development County Extension Agent  
email: [zachary.giblin@ag.tamu.edu](mailto:zachary.giblin@ag.tamu.edu)  
Favorite 4-H Project: Foods & Nutrition

---



**Steven Frederick**  
4-H Livestock Coordinator  
email: [steven.frederick@ag.tamu.edu](mailto:steven.frederick@ag.tamu.edu)  
Favorite 4-H Project: Livestock

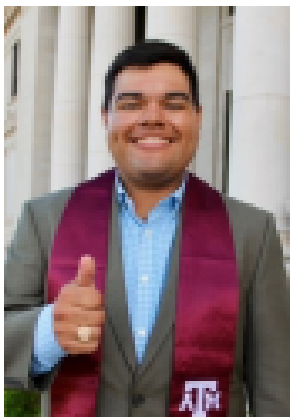
---



---

**Misha Chakraborty**  
4-H Grants and Outreach Coordinator  
email: [misha.chakraborty@ag.tamu.edu](mailto:misha.chakraborty@ag.tamu.edu)  
Favorite 4-H Project: Gardening & STEM

---



**Aaron Zavala**  
4-H & Youth Development Program Assistant  
email: [aaron.zavala@ag.tamu.edu](mailto:aaron.zavala@ag.tamu.edu)  
Favorite 4-H Project: Grilling Like a Texan

---



The members of Texas A&M AgriLife will provide equal opportunities in programs and activities, education, and employment to all persons regardless of race, color, sex, religion, national origin, age, disability, genetic information, veteran status, sexual orientation, or gender identity and will strive to achieve full and equal employment opportunity throughout Texas A&M AgriLife. Individuals with disabilities who require an auxiliary aid, service, or accommodation in order to participate in this meeting are encouraged to contact the County Extension Office prior to the meeting to determine how reasonable accommodations can be made.