

Clean Coast Texas

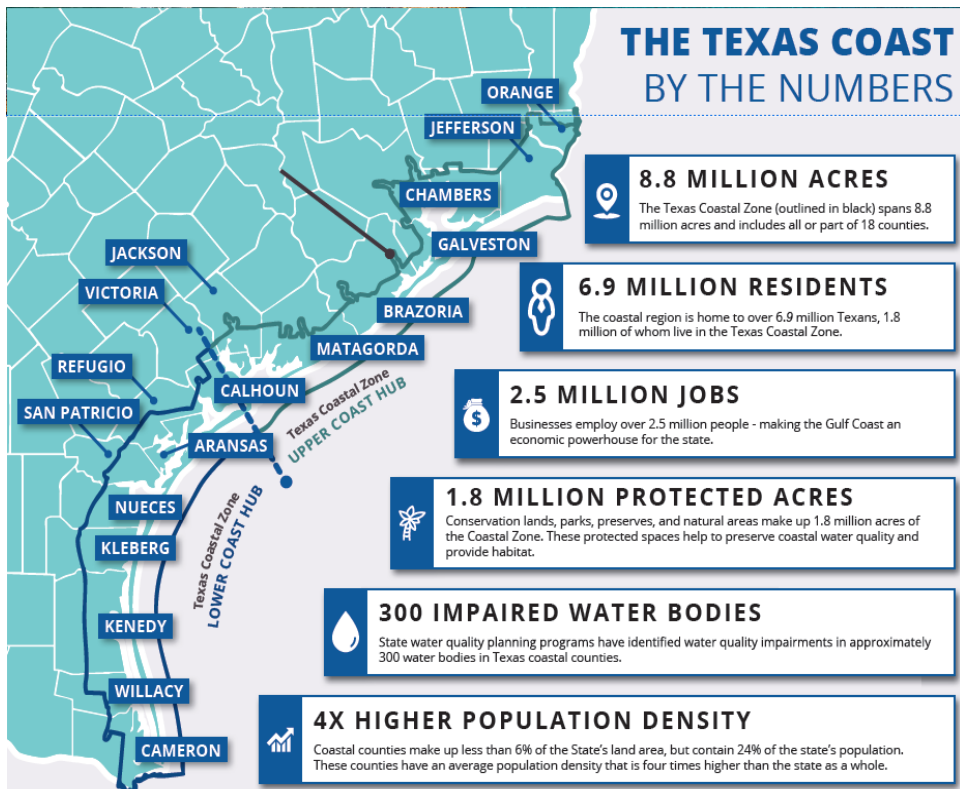
An Initiative of the Texas Coastal Nonpoint Source Pollution Program

Helping communities reduce pollution and enhance water quality along the Texas Coast.

A program that provides technical resources and planning tools that:

- Support local decisions
- Improve coordination
- Resolve water quality problems
- Enhance flood management
- Plan and seek funding for projects





TEXAS COMMUNITY
WATERSHED
PARTNERS



TEXAS A&M
UNIVERSITY
CORPUS
CHRISTI

HARTE
RESEARCH INSTITUTE
FOR GULF OF MEXICO STUDIES



Sea Grant
Texas
AT TEXAS A&M UNIVERSITY

halff

Collaboration

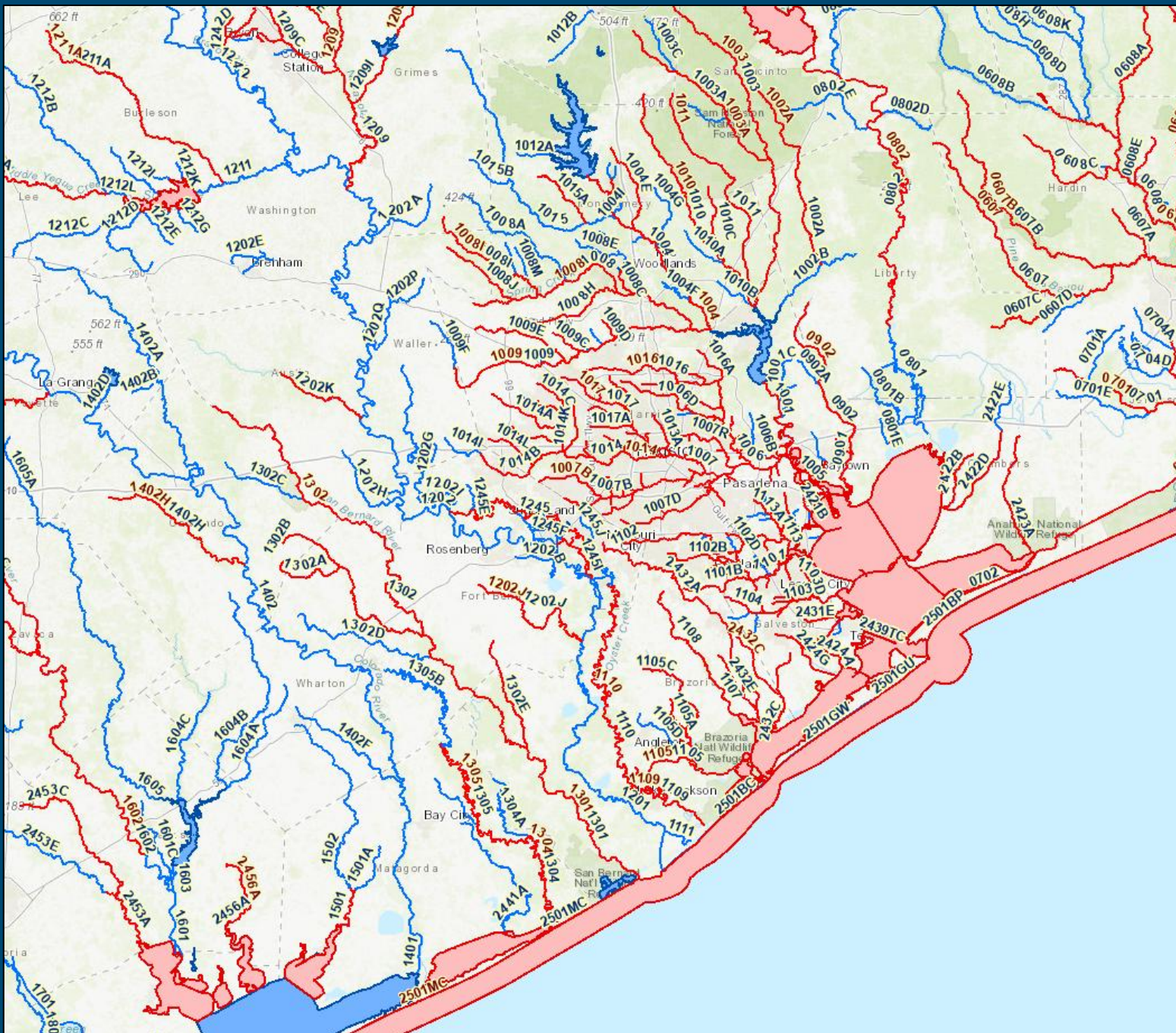
- ❖ Texas General Land Office- Program Management.
- ❖ Harte Research Institute at TAMU-CC – Program Coordination, Engagement, Technical Support.
- ❖ Texas Community Watershed Partners- Education and Outreach including future growth and scenario planning, workshops and resources.
- ❖ Texas Sea Grant at TAMU- Local Planning and Engagement Support.
- ❖ Halff Associates, Anchor QEA- Engineering, planning, outreach and technical support.





Increasing bacteria levels over time correlate with population growth

**Urbanization = more impervious surfaces, stormwater runoff,
bacteria = threat to coastal tourism & economies**



Source: Texas Commission on Environmental Quality

How can Clean Coast Texas help?

Support for:

- Programs to improve water quality while promoting flood management
- Local planning, siting, construction and retrofit activities
- Programs to enhance tourism and economic development

Access to:

- Education and outreach specialists
- Extensive technical guidance and funding assistance
- Analyses of water quality data to improve beach conditions

Menu of Services

Stormwater Retrofit Design & Construction

- Water quality and stormwater management for new and existing development
- Conceptual Design and Planning
- Construction Plans, Cost Estimates, and Permitting
- Maintenance Guidance

Water Quality Analysis & Citizen Science

- Texas Stream Team Citizen Science Trainings
- Water Quality Evaluation in the Community
- Review and Comment on Engineering and Drainage Studies
- Policy Evaluation and Development

Education & Community Events

- Facilitate Workshops with the Public, Municipal Staff and Elected Officials
- Support School and Adult Programs
- Create and Install Interpretive Signage
- Community Clean-up Events
- SW Drainage Markers

Planning and Regulatory Support

- Co-Develop Stormwater Management Criteria
- Support Ordinance development and Adoption
- Floodplain Management
- Support Community and Stormwater Planning Efforts

Partnership Development

- Identify Connections and Opportunities for Regional Project Coordination
- Help Communities Develop Partnerships with Other Municipalities, Nonprofit Organizations, Regional Councils of Governments, and Watershed Coordinators.
- Develop Inter-local Agreements to Define Roles and Responsibilities

Grant Funding Assistance

- Grant Writing Support
- Acquire and Interpret Grant Opportunities
- Identify Grant Matching Resources

Helping communities reduce pollution and enhance water quality along the Texas Coast



GUIDANCE FOR SUSTAINABLE STORMWATER DRAINAGE ON THE TEXAS COAST

FOR NONPOINT SOURCE POLLUTION & FLOOD MANAGEMENT

3RD EDITION



Voluntary and incentive-based initiatives for Communities

Provide technical resources and planning tools that:

- ❖ Technical Design Guidance
- ❖ Construction Details
- ❖ Maintenance Guidance
- ❖ Model Criteria/Ordinance
- ❖ Design Methods Incentivizes LID/GSI
- ❖ Retrofits and Creek Restoration

Benefits of Sustainable Design

Preserve unique coastal water resources

- ❖ Manage water quality from stormwater runoff (nonpoint source pollution)
- ❖ Floodplain management
- ❖ Shoreline restoration

LID/Green Infrastructure guidance

- ❖ Lower cost
- ❖ Incentivized approach
- ❖ Resilient and sustainable
- ❖ Attractive measures

Sustainable Design Examples

**Vegetation filters
pollutants**

**Reduces Standing water
and flood risk**

Revitalization/Aesthetics

**Reuse for nonpotable
purposes**

**Slows down water and
supports infiltration**



GIFT Workshop in La Marque- 2024



Workshops

GIFT (Green Infrastructure for Texas)

- GIFT is a multi-level approach to Green Infrastructure
- The workshop invites the public, elected officials and municipal staff to learn about GI. It gives an overview of what Green Stormwater Infrastructure is, how it supports natural resource protection, enhances water quality and improves coastal resilience.

CHARM Workshop in Port Lavaca- 2023



CHARM (Community Health And Resource Management mapping application)

- The tool gives local officials, stakeholders, and citizens the power to map and analyze growth with real-time feedback.
- supported with a library of mapping data about urbanization, storm surges, conservation, public facilities, and coastal resources.

GIFT Workshop with a Demonstration of Soil Consistency- 2023



HAVE YOU SEEN THESE POLLUTERS?



TOO MUCH BACTERIA AND LITTER CREATE UNSAFE BEACHES

Animal Waste Not only smelly — it contains harmful bacteria. If not picked up, that bacteria ends up in our beaches and bays.

Litter and Trash, especially plastics, hurts wildlife and water quality. Wildlife can mistake trash for food. Trash, like glass, is a safety hazard.

YOU CAN HELP PREVENT THESE COMMON TYPES OF POLLUTION BY:

- Disposing of trash and fishing line, even if it isn't yours
- Picking up after your pet
- Packing food in reusable containers

Learn more at cleancoast.texas.gov



THIS PROJECT WAS FUNDED BY A TEXAS COASTAL MANAGEMENT PROGRAM GRANT APPROVED BY THE TEXAS LAND COMMISSIONER, PROVIDING FINANCIAL ASSISTANCE UNDER THE COASTAL ZONE MANAGEMENT ACT OF 1972, AS AMENDED, AWARDED BY THE NATIONAL OCEANIC AND ATMOSPHERIC ADMINISTRATION (NOAA), OFFICE FOR COASTAL MANAGEMENT, PURSUANT TO NOAA AWARD NO. NA39W064190106.

Contact Clean Coast Texas



TEXAS A&M
UNIVERSITY
CORPUS
CHRISTI

HARTE
RESEARCH INSTITUTE
FOR GULF OF MEXICO STUDIES

Ashley Bennis

Coastal Coordinator

Email: ashley.bennis@tamucc.edu

Phone: 361.825.2300

Dr. Mike Wetz

*Harte Research Institute Endowed
Chair, Coastal Ecosystem Processes*

Email: michael.wetz@tamucc.edu

Phone: 361.825.2132



Scott Jones

Community Outreach Specialist,
Green Infrastructure for Texas

scott.jones@ag.tamu.edu

832-856-3451 (office)

713-376-9686 (cell)