

2017-2018 FORT BEND 4-H COUNTY PHOTOGRAPHY CONTEST GUIDELINES

PURPOSE & OBJECTIVES

The Fort Bend 4-H County Photography Contest encourages self-expression and allows youth to demonstrate skills learned in the area of photography, including the use of photographic equipment and process of photographs.

- To develop skills in composition, light, story line, posing, and awareness.
- To encourage 4-H members to use photography as a meaningful communication tool in their lives.
- To continue to share the message of 4-H.
- To utilize photographs which can promote and strengthen the 4-H program.

ENTRIES

Participation Divisions (must have an *active* status in 4-H Connect)

Clover Kid (grade K-2)
Junior (grade 3-5)
Intermediate (grade 6-8)
Senior (grade 9-12)

Entries

Participants may enter only one photo per category, for a total of 15 entries.*

**Enhanced category will have 2 photos submitted: the original and the final digital piece.*

Photo Eligibility

Photo must be taken by participants between the dates of January 1, 2016 and the time of entry.

Photo Format & Name

Photo format must be .jpeg, .jpg, or .gif.

Photos must be renamed to fit following format: Division_Category_Name (ex. Junior_Food_JaneSmith)

Entry Method

Online Submittal form located at: <http://agrilife.org/ftbend4h/photography-contest/>

All entries will be submitted online using the FBC 4-H Website. No emailed submissions will be accepted.

Entry Fee

\$5.00 per 4-H youth for Junior, Intermediate & Senior Divisions. Free to youth in Clover Kid Division.

Please see "Payment Method" section for all payment options.

Entry & Payment Deadline

Entries & Payment(online/in-person) will not be accepted after 5:00 pm on Monday, February 5, 2018. If you plan to mail payment, it must be postmarked Monday, February 5, 2018.

PAYMENT METHODS

- Payments can be made one of three ways.
 - In person to the FBC Extension Office.
 - By Mail (must be postmarked by Mon, Feb. 5)
 - Online using Eventbrite (payment link will be provide upon entry submittal)
 - Eventbrite site for payment: fortbend4h.eventbrite.com
 - using the online method will include the entry total plus a convenience fee

ACADEMIC ELIGIBILITY

An eligibility form is required for all participants. You can request an eligibility form from the 4-H website, <http://agrilife.org/ftbend4h/eligibility-form/> or by contacting the 4-H Department.

Eligibility Forms (No Pass, No Play) are the member's responsibility to complete for any competitive 4-H event regardless of the day of competition. Even if you are not missing school, you still need to turn in an eligibility form.

CLOVER KIDS

Clover kids will have to submit their entries online but are not required to pay the entry fee or provide an eligibility form as their photos are not being judged for competition. They will however receive feedback as to how they can make their entries better.

RESOLUTION & SIZE

- Photo must be print quality resolution (300dpi).
- Size: Must be 8"x10" (portrait) or 10"x8" (landscape).
- Size: Photo may not be larger than 5120KB (5MB).

ALTERATIONS & TEXT USAGE

Alterations: Slight enhancements are allowed, such as cropping, adjusting the lighting and reducing red eye, **other** alterations will disqualify an entry. Other types of alterations, manipulations, edits, such as changing colors, applying design styles, applying filters, or using computer graphics would require the photo to be entered into the Digital Darkroom category.

Text on Photographs: Beyond the storyboard and digital darkroom categories, photographs **MUST NOT** contain camera or user placed text. This includes such things as date stamps, comments, or titles. Text or wording that is part of the photograph (i.e. photo of a street sign, etc) is acceptable.

ORIGINAL WORK OF 4-H MEMBER

Entry must be the original photographic work of the 4-H member and not a photo taken by family members, other 4-H members, or secured from any other printed/electronic source. Any photo proven to be found as not original work will result in disqualification of **ALL** the 4-H member's entries into the Photography Contest. Additionally, actions may be taken against the 4-H member in accordance with to the Consequences of Misbehavior and Code of Conduct signed by the 4-H member.

AWARDS, DISPLAY AND JUDGING

Awards and Recognition: Quality Awards: Blue, Red, & White quality awards will be given based on the scoring criteria.

Judging and Results: Each photograph will be judged against a set of judging criteria, and not against photographs of peers. Based on total points awarded for each photograph, the participant will be awarded either a blue, red, or white ribbon. See Contest Judging Criteria. Total of the scores will determine the placings and all decisions are final.

RELEASES

Content: Photos that are deemed obscene, vulgar, sexually-oriented, hateful, threatening, or otherwise violate any laws are strictly prohibited. The 4-H Youth Development Program reserves the right to refuse inappropriate or unsuitable entries.

Copyright: The 4-H Youth Development Program respects the rights related to copyright laws and intellectual property. All photos should be based on a participant's original photograph. Use of a photo from other sources/people without permission is not allowed.

Display and Future Usage Rights: Participant grants permission to the Fort Bend 4-H Youth Development Program and Texas A&M AgriLife Extension, the use and rights associated to the use of the photographic likeness in promotional publications and other media, without compensation. Certain photos may be used for 4-H program and marketing uses.

Model and Property Releases: It is required that each participant have sufficient permission granted to both the photographer and the 4-H Youth Development Program to publish and use as needed any recognizable locations or people photographed. Documentation should be retained by the participant and be available upon request from the Texas 4-H Youth Development Program.

DISQUALIFICATION

Reasons for disqualification:

- Participant is not an active 4-H member.
- Participant did not submit entry/entries to county by the deadline.
- Entry fee not paid or only partial fee paid by deadline.
- Photograph was not entered in the proper procedure.
- Photograph too small in size to be evaluated.
- Extremely poor quality/resolution.
- Category: Does not meet category criteria, rules or guidelines. (see category descriptions)
- Category: Multiple entries into a category.
- Category: One photo entered into multiple categories.
- Manipulation of photo beyond what is allowed.
- Broken content rule. This includes inappropriate or unsuitable content.
- Broken copyright rule. Photo is not the work of the 4-H member.
- Broken display and future usage rights rule.
- Broken model and property release rule.

RESOURCE: Texas 4-H Website: <http://texas4-h.tamu.edu/projects/photography-video/>

CATEGORY DESCRIPTION

EXAMPLE

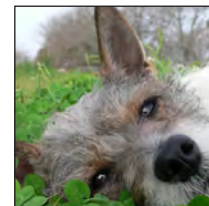
ANIMALS - DOMESTIC

Description

Photos focusing on the various animals that have been tamed and made fit for a human environment. To be considered domesticated, the animal must have their behavior, life cycle, or physiology systemically altered as a result of being under human control for many generations.

Examples

Dog, Sheep, Pig, Goat, Cow, Cat, Chicken, Horse, Camel, Goose, Ducks (domestic use), Hamsters.



ANIMALS - WILDLIFE

Description

Category focuses on animals not tamed or domesticated and commonly found in the wild throughout the country and world. Photos can be of wildlife in nature, zoos, and/or petting zoos.

Examples

Deer, snakes, insects, rodents, elephants, etc.



CATCH-ALL

Description

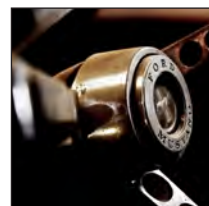
Category for photos that do not fit into one of the other categories. This includes such photos as still-life, motion-blur, Polaroid transfers, SX-70 images, handcolored photos.

What is NOT Allowed

Do not submit a photo in this category which can clearly be submitted in another photography category. Catch-all is not intended for counties to use to eliminate duplicate photos from multiple 4-H members.

Examples

Polaroid image & emulsion transfers, still-life, long exposure zoomed images, and painting with light.



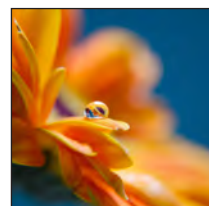
DETAILS & MACRO

Description

Getting in close is the name of the game for this category. We welcome pictures of small details that suggest a larger story. This is also the place for macro photographs (although a macro image of a flower might equally go into the Flowers category).

Examples

detail of a knot, a lock, or an abstract close-up - anything as long as it is a tight composition of a detail. Macro examples include parts of a flower bloom, insects, stamps, ice crystals, etc.



ENHANCED

Description

A single photo that has been technically manipulated to be an abstract, panoramic, stitched, or composite images. Others variations are allowed as well.

Examples

Photoshop® composites and creations, images greatly manipulated with a variety of filters, photos with artistic borders, photos stitched into a panoramic.



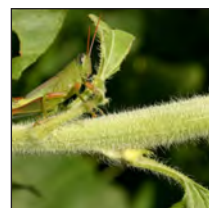
DOMINANT COLOR

Description

Photos with a dominant color. The dominant element in the image must be a specific color, such as red, yellow, blue, white, black, white, green, etc. Black & White photos, duotones, are excluded from this category.

Examples

bowl of lemons, in a yellow bowl, on top of a yellow table covering, with a bright yellow tone sunlighting on it.



ELEMENTS OF DESIGN

Description

Images use of graphic elements of design. Photos that showcase line, shape, pattern, form, texture, perspective, etc. Photo can consist of any subject matter. Category is not for graphic illustrations made in commercial programs (i.e. Adobe Illustrator®) nor for extreme digital creations.

Examples

Perspective, Line, Pattern.



CATEGORY DESCRIPTION

EXAMPLE

FOOD

Description

Category is a still life specialization of photography, aimed at producing attractive photographs of food for use in such items of advertisements, packaging, menus and/or cookbooks.

What is NOT Allowed

No photos of alcoholic beverages are allowed!

Examples

Thanksgiving dinner, cakes/pies, fruits and place settings, Easter eggs, sandwiches, ingredients, etc.



TRAVEL & PLACE

Description

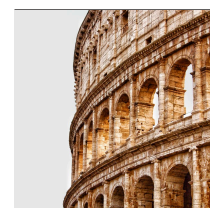
This category includes images that express the joys and adventures of travel photography, showcasing place as an important part of the photo. This category can include historic buildings, ruins, islands, any subject you might encounter while traveling, as long as the photo expresses a sense of PLACE.

What is NOT Allowed

Photos may not be entered into other categories but may be similar, however, must depict traveling and experiencing other parts of the world.

Examples

Disney World/Land, Roman Ruins, Great Wall of China



NATURE & LANDSCAPE (NON-ANIMAL)

Description

The focus of this category includes landscapes, outdoor scenics, nature images, sunsets, urban landscapes, seascapes, cityscapes, and farms. Images focus on the beauty of the outdoors.

What is NOT Allowed

Photos in which the primary subject is wildlife or persons.

Examples

Landscapes, Scenics, Outdoors.



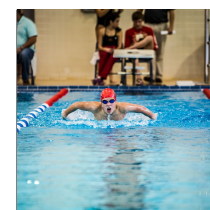
SPORTS

Description

Photo that captures individual or team sports. Can be either professional or amateur (human) and the focus could be on the sportsperson, the sport environment, the effort expended, or the conflict/rewards. Must reflect a strong message.

Examples

Gymnast, football player or team, swimming, rodeo contestant.



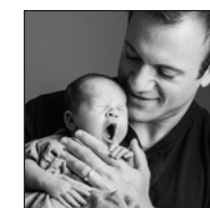
PEOPLE

Description

Photos focus from all walks of life, parenting and family, children, babies, models/fashion, sports, and couples. See Model and Property Releases.

Examples

Kids & Family, Models/Fashion, Sports.



PLANT/FLORA

Description

Photos of interesting, unique, and beautiful flowers and flora. Photography can occur outdoors or indoors. Photo subject should be that of a single flower, plant, bush, tree, etc. Large collections of plant/flora should be considered for entry into the Nature & Landscape category.

Examples

A rose, an upward shot of a tree, a flower bouquet, etc.



MOVEMENT/ACTION

Description

The capture of movement within a single photo.

What is NOT Allowed

Photos which would clearly fit into another photo, such as sports.

Examples

Horse running across a field, ferris wheel spinning.



THEME

Description

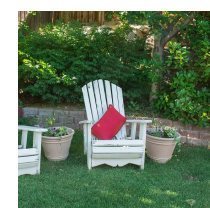
Theme photo focuses on a subject announced and outlined in the contest rules and guidelines. For 2017-2018 year the theme is "Backyard". This creative category will feature photos of what one would see when stepping out your back door.

What is NOT Allowed

Photos should not be of ranch rangeland, but focus on immediate outside area of one's home.

Examples

Kids swimming, swimming pool, person mowing yard, garden/flower beds.



JUDGING CRITERIA

Each photograph will be judged against the following set of judging criteria, and not against photographs of your peers. Based on total points awarded for each photograph, the participant will be awarded either a blue, red, white, or a participation ribbon. The elements for judging the photographs will be:

IMPACT (Max Points: 15)	Impact is the sense one gets upon viewing an image for the first time. Compelling images evoke laughter, sadness, anger, pride, wonder or another intense emotion. There can be impact in any of these twelve elements.
CREATIVITY (Max Points: 15)	Creativity is the original, fresh, and external expression of the imagination of the maker by using the medium to convey an idea, message or thought.
TECHNICAL (Max Points: 25)	Technical is the quality of the image itself as it is presented for viewing, which includes the following aspects: <ul style="list-style-type: none">• allowable amounts of retouching and adjustments (removal of red eye, cropping, minor straightening)• sharpness and and correct color balance.• lighting, which includes the use and control of light. The use of lighting whether natural or man-made and its proper use to enhance the image.• Posing and capturing of the image
COMPOSITION (Max Points: 20)	Composition is important to the design of an image, bringing all of the visual elements together in concert to express the purpose of the image. Proper composition holds the viewer in the image and prompts the viewer to look where the creator intends. Effective composition can be pleasing or disturbing, depending on the intent of the image maker.
SUBJECT MATTER (Max Points: 15)	Subject Matter should always be appropriate to the story being told (i.e. category the photo is entered into) in an image. Subject matter also includes the center of interest for the photograph or where the maker wants the viewer to stop and they view the image.
STORY TELLING (Max Points: 10)	Story Telling refers to the image's ability to evoke imagination. One beautiful thing about art is that each viewer might collect his own message or read her own story in an image.

2018 Texas 4-H Photography Contest

Score Sheet



Name: _____ County: _____

Category: _____

You are competing against previously determined standards of excellence, not against your peers. Before preparing your entry for submission please carefully review the judging criteria.

JUDGES, PLEASE INDICATE POINTS AWARDED IN FAR RIGHT COLUMN:

CATEGORY	MINIMUM POINTS	MAXIMUM POINTS	POINTS AWARDED
Impact	0	15	
Creativity	0	15	
Technical	0	25	
Composition	0	20	
Subject Matter	0	15	
Story Telling	0	10	
TOTAL POINTS AWARDED			

AWARD (circle one)	Blue Award (100 points to 81 points)	Red Award (80 to 51 points)	White Award (50 to 31 points)	Participant Award (30 to 0 points)
------------------------------	--	---------------------------------------	---	--

JUDGES COMMENTS: