

TEXAS 4-H YOUTH DEVELOPMENT

September 1, 2021


MEMORANDUM

**TO:** District 8 County Extension Agents

**FROM:** Donald W. Kelm  
District Extension Administrator



Megan R. Parr  
Extension Program Specialist  
4-H Youth Development



**SUBJECT:** 2021 DISTRICT 8 4-H AG PRODUCT IDENTIFICATION CONTEST

---

**Events:** Ag Product Identification

**Event Date:** Friday, November 5, 2021

**Location:** Skyline Baptist Church  
906 Trimmier Road  
Killeen, TX 76541

The GPS coordinates you can use are [31.10940859948036, -97.7273180731672](https://www.google.com/maps/place/31.10940859948036,-97.7273180731672).

**Entry Deadline:** All entries will be completed on 4-H Online at <https://texas.4honline.com/>.  
Opens: October 11, 2021  
Closes: October 22, 2021

**County Approvals:** County offices need to approve registrations on 4-H Online by Monday, October 25, 2021.

**Entry Fee:** \$10 per member per event

**Late Entries:** Late entries will be permitted with an additional:

- \$20 late fee per 4-H member up to 60 hours after the regular contest deadline.
- \$50 late fee per 4-H member after 60 hours and up to the time of check-in on-site at an event.

**Auxiliary Aids or**

**Special Accommodations:** If you have any participants requiring auxiliary aids or special accommodations, please let us know at the time of entry.

Central District 8 | 4-H Youth Development  
Texas A&M AgriLife Extension Service  
1229 N US Hwy 281 | Stephenville, Texas 76401  
[megan.parr@ag.tamu.edu](mailto:megan.parr@ag.tamu.edu) | <http://d84-h.tamu.edu>  
Tel. 254.968.4144 ext.211 | Fax. 254.965.3759



## D8 4-H AG PRODUCT IDENTIFICATION CONTEST

### *Schedule*

	Check-in by:	Orientation/Contest Starts
Ag Product Identification	3:00 pm	3:15 pm
Awards Ceremony	<i>Approximately 4:30 pm or immediately following completion of tabulation for Ag Product Identification.</i>	

### *General Rules for all District 8 4-H Contests*

#### 1. Rules and Guidelines

All District contests will be conducted by the rules printed in the District 8 General Rules and Guidelines and in the 2022 Texas 4-H Roundup Guide. If an inconsistency exists, the Texas 4-H Roundup Guide rules will always supersede District policies, rules, and guidelines. All contests listed in the Texas 4-H Roundup Guide will be included in District Contest, provided there are sufficient entries.

#### 2. Membership

Participants must be a bona fide 4-H member, currently enrolled in their respective county program.

#### 3. Age Divisions

There will be three (3) age divisions (Junior, Intermediate, and Senior) in all contests.

Age divisions are determined by a participant's grade as of August 31, 2021 as follows:

Age Division	Grades	
Junior	3*, 4, or 5	<i>*Must be at least 8 years old</i>
Intermediate	6, 7, or 8	
Senior	9, 10, 11, or 12*	<i>*Must not be older than 18 years old</i>

Only Senior aged members may advance to the state qualifying competition at Texas 4-H Roundup in the qualifying contests.

#### 4. Participation/Entries

4-H members must be certified by the County Extension Agent to participate at any District 4-H event.

#### 5. Team per county

There is no limit to the number of teams a county may enter in the district contest.

#### 6. Members per team

These are team events; therefore, entrants are encouraged to be part of a team. Each team will have at least three (3) and no more than four (4) members. Individual entries will be allowed, only if there are not enough individuals in the county to make up a team.

*Note:* A County can only have a maximum of 2 individual entries per age division. If there are 3 individuals wanting to judge in the same age division, they must be considered a team entry.

All team members must be from the same county and within the same age division. Exception: Juniors may move up to the Intermediate age division when participating on a team that has true Intermediates (based upon grades listed above) on it. No one may move up to the Senior age division. No individual may move down to a younger age division.

## **7. Academic Eligibility of Participants**

According to the Texas Education Code, a 4-H member must be deemed “eligible” to compete in an event that takes place on a weekday or weekend. All 4-H youth, including youth in public, private, and/or home school must adhere to the following guidelines regarding extracurricular activities and academic eligibility:

- Complete a “Declaration of Eligibility Form”  
OR
- Name of 4-H member must appear on a list of eligible students to participate in a specific extracurricular activity signed by the school principal or designee.

If a 4-H member is ineligible for a 4-H competitive event, the agent must notify the 4-H member, his/her parents, and the district office, by letter, of this situation. If the parent has any questions, he/she should be referred to the school administrator.

## **8. Entry Fee**

There is a \$10 entry fee per member per contest. All entries must be submitted through 4-H Online by the entry due date.

## **9. Late Fees**

Late entries will be permitted with an additional \$20 late fee per 4-H member 60 hours after the regular contest deadline. \$50 late fee per member after 60 hours and up to the time of the check-in on-site at the event.

## **10. Awards**

The top three (3) teams and the top five (5) individuals in each age division in each contest will receive awards.

## **11. Auxiliary Aids/Special Accommodations**

If 4-H members that are participating in District 4-H events require auxiliary aids or special accommodations, please notify the District Office at the same time that entry materials are due.

# *Agriculture Production Identification Contest Rules*

1. **Contest Format.**
  - a. 20 Texas agricultural products are selected and exhibited at separate stations. Products can range from garlic to a ribeye steak.
  - b. Contestants select the correct identification of each product from four possible answers.
  - c. Each station also has one multiple choice question pertaining to the product on display.
    - i. Questions are general to the industry that produced the product, (i.e. Texas' national ranking, economic impact to Texas, general nutritional content, region of production) or specific to the individual product that is on display (i.e. cooking method, use, growing season, specific nutrition of the cut or variety).
  - d. Contestants are given 30 seconds at each station to answer both questions.
  - e. Contestants must advance from one exhibit to the next when instructed to do so.
  - f. Contestants must evaluate each exhibit in sequence and will not be allowed to return to any exhibit after advancing.
  - g. The contest will be open for all youth and adults present to walk-through the exhibits following the completion of the contest.
2. **Scoring.** Contestants will receive five points for each product that is correctly identified and five points for each question that is correctly answered. However, for points to be awarded on questions pertaining directly to the product displayed, the product must be correctly identified. (Total possible points: 200 per individual.)
3. **Team Scores.** Team scores will be determined by the combined score of the three (3) highest scoring individual team members. The contestant with the lowest score will be designated as alternate but will still be eligible to receive individual awards. (Total possible points: 600 per team.)
4. **Ties:** Five stations will be selected as tie breakers in advance of the contest. Teams with the highest cumulative scores at these five stations will win any ties. If ties remain, winners will be determined by a method designated by the contest officials.
5. **Study Guide and Resources.** The Ag Product Identification Study Guide that includes numerous websites and resources can be found at the following link:  
<http://texas4-h.tamu.edu/wp-content/uploads/agproductidguide.pdf>
6. **Scan Sheet.** The Agricultural Product Identification Form scan sheet, Form #API2 will be used.\_

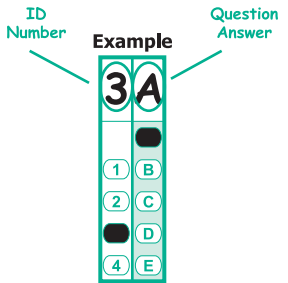
# Agricultural Product Identification Form #API2

Team Name

Last Name										First Name									
<input type="text"/>	<input type="text"/>	<input type="text"/>	<input type="text"/>	<input type="text"/>	<input type="text"/>	<input type="text"/>	<input type="text"/>	<input type="text"/>	<input type="text"/>	<input type="text"/>	<input type="text"/>	<input type="text"/>	<input type="text"/>	<input type="text"/>	<input type="text"/>	<input type="text"/>	<input type="text"/>	<input type="text"/>	<input type="text"/>
<input type="text"/>	<input type="text"/>	<input type="text"/>	<input type="text"/>	<input type="text"/>	<input type="text"/>	<input type="text"/>	<input type="text"/>	<input type="text"/>	<input type="text"/>	<input type="text"/>	<input type="text"/>	<input type="text"/>	<input type="text"/>	<input type="text"/>	<input type="text"/>	<input type="text"/>	<input type="text"/>	<input type="text"/>	<input type="text"/>
A	A	A	A	A	A	A	A	A	A	A	A	A	A	A	A	A	A	A	A
B	B	B	B	B	B	B	B	B	B	B	B	B	B	B	B	B	B	B	B
C	C	C	C	C	C	C	C	C	C	C	C	C	C	C	C	C	C	C	C
D	D	D	D	D	D	D	D	D	D	D	D	D	D	D	D	D	D	D	D
E	E	E	E	E	E	E	E	E	E	E	E	E	E	E	E	E	E	E	E
F	F	F	F	F	F	F	F	F	F	F	F	F	F	F	F	F	F	F	F
G	G	G	G	G	G	G	G	G	G	G	G	G	G	G	G	G	G	G	G
H	H	H	H	H	H	H	H	H	H	H	H	H	H	H	H	H	H	H	H
I	I	I	I	I	I	I	I	I	I	I	I	I	I	I	I	I	I	I	I
J	J	J	J	J	J	J	J	J	J	J	J	J	J	J	J	J	J	J	J
K	K	K	K	K	K	K	K	K	K	K	K	K	K	K	K	K	K	K	K
L	L	L	L	L	L	L	L	L	L	L	L	L	L	L	L	L	L	L	L
M	M	M	M	M	M	M	M	M	M	M	M	M	M	M	M	M	M	M	M
N	N	N	N	N	N	N	N	N	N	N	N	N	N	N	N	N	N	N	N
O	O	O	O	O	O	O	O	O	O	O	O	O	O	O	O	O	O	O	O
P	P	P	P	P	P	P	P	P	P	P	P	P	P	P	P	P	P	P	P
Q	Q	Q	Q	Q	Q	Q	Q	Q	Q	Q	Q	Q	Q	Q	Q	Q	Q	Q	Q
R	R	R	R	R	R	R	R	R	R	R	R	R	R	R	R	R	R	R	R
S	S	S	S	S	S	S	S	S	S	S	S	S	S	S	S	S	S	S	S
T	T	T	T	T	T	T	T	T	T	T	T	T	T	T	T	T	T	T	T
U	U	U	U	U	U	U	U	U	U	U	U	U	U	U	U	U	U	U	U
V	V	V	V	V	V	V	V	V	V	V	V	V	V	V	V	V	V	V	V
W	W	W	W	W	W	W	W	W	W	W	W	W	W	W	W	W	W	W	W
X	X	X	X	X	X	X	X	X	X	X	X	X	X	X	X	X	X	X	X
Y	Y	Y	Y	Y	Y	Y	Y	Y	Y	Y	Y	Y	Y	Y	Y	Y	Y	Y	Y
Z	Z	Z	Z	Z	Z	Z	Z	Z	Z	Z	Z	Z	Z	Z	Z	Z	Z	Z	Z

Team #			
<input type="text"/>	<input type="text"/>	<input type="text"/>	<input type="text"/>
0	0	0	0
1	1	1	1
2	2	2	2
3	3	3	3
4	4	4	4
5	5	5	5
6	6	6	6
7	7	7	7
8	8	8	8
9	9	9	9

Division
<input type="radio"/> 4-H or FFA
<input type="radio"/> Public School



1
<input type="text"/>
<input type="text"/>
A
1 B
2 C
3 D
4 E

2
<input type="text"/>
<input type="text"/>
A
1 B
2 C
3 D
4 E

3
<input type="text"/>
<input type="text"/>
A
1 B
2 C
3 D
4 E

4
<input type="text"/>
<input type="text"/>
A
1 B
2 C
3 D
4 E

5
<input type="text"/>
<input type="text"/>
A
1 B
2 C
3 D
4 E

6
<input type="text"/>
<input type="text"/>
A
1 B
2 C
3 D
4 E

7
<input type="text"/>
<input type="text"/>
A
1 B
2 C
3 D
4 E

8
<input type="text"/>
<input type="text"/>
A
1 B
2 C
3 D
4 E

9
<input type="text"/>
<input type="text"/>
A
1 B
2 C
3 D
4 E

10
<input type="text"/>
<input type="text"/>
A
1 B
2 C
3 D
4 E

11
<input type="text"/>
<input type="text"/>
A
1 B
2 C
3 D
4 E

12
<input type="text"/>
<input type="text"/>
A
1 B
2 C
3 D
4 E

13
<input type="text"/>
<input type="text"/>
A
1 B
2 C
3 D
4 E

14
<input type="text"/>
<input type="text"/>
A
1 B
2 C
3 D
4 E

15
<input type="text"/>
<input type="text"/>
A
1 B
2 C
3 D
4 E

16
<input type="text"/>
<input type="text"/>
A
1 B
2 C
3 D
4 E

17
<input type="text"/>
<input type="text"/>
A
1 B
2 C
3 D
4 E

18
<input type="text"/>
<input type="text"/>
A
1 B
2 C
3 D
4 E

19
<input type="text"/>
<input type="text"/>
A
1 B
2 C
3 D
4 E

20
<input type="text"/>
<input type="text"/>
A
1 B
2 C
3 D
4 E