

## Bee Identification

### What's a bee? And what isn't?

Distinguishing between a bee and wasp can be tricky at times, but here are some simple characteristics to differentiate between the two:

- Wasps tend to have more prominent coloration and patterns than bees.
- Wasp bodies are usually smoother, whereas bees tend to be more hairy.
- Due to their hairless bodies, wasps do not carry pollen. They do feed on nectar and collect other insects to feed to their carnivorous young.
- Wasps can sting repeatedly, as opposed to some bees that lose their stinger once it is used.



[https://insects.tamu.edu/extension/publications/epubs/e\\_346.cfm](https://insects.tamu.edu/extension/publications/epubs/e_346.cfm)

## Wasps found in Texas

### Paper Wasps



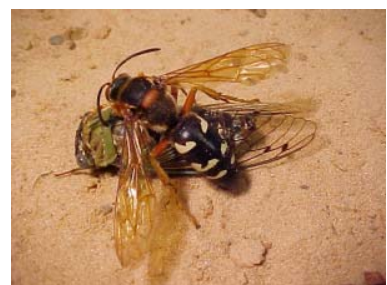
### Yellow jackets



### Hornets



### Cicada Killers



Mud Daubers



Mexican Honey Wasps



## Native bees of Texas

Bumblebees



Carpenter bees



Squash bees



Leafcutter bees



Sweat bees



**Mason bees**



**Yellow-faced bees**



**Andrenid bees**

