

Global Rangeland Stewardship Needs Transformational Change

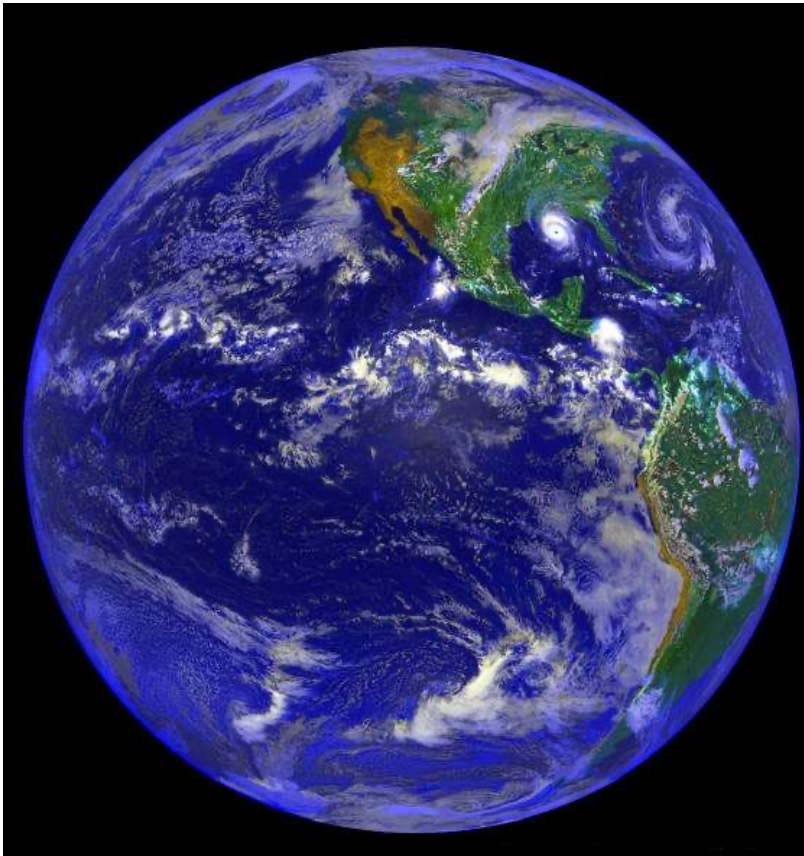
David D. Briske
Texas A&M University
D. Layne Coppock
Utah State University

76th Annual Society for Range Management Meeting



Rangeland Planetary Value

Global Rangelands



Rangeland Value

- 54% total land area
- 50% intact ecosystems
- Rich biodiversity
- 30% terrestrial C pool
- Cultural Heritage Sites
- Diverse pastoral societies
- Sustainable food security

(Millennium Assessment 2005,
Rangeland Atlas 2021)

Focal Question

- Do current stewardship strategies appropriately represent planetary rangeland value?
- Earth stewardship - approaches to shaping social-ecological change at local to global levels to enhance ecosystem resilience and human well-being (ESA).



Stewardship Is Insufficient!

- U.N. Benign Neglect Report – 2019
- Formal representation lacking
 - ✓ No designated programs in I-G organizations
 - ✓ Omission from U.N. Sustainable Development Goals
- Declining rangeland ecosystem services
- Afforestation targets for climate mitigation
- Uncertainty of pastoral sustainability

Why Stewardship Insufficient?

Forest Chauvinism



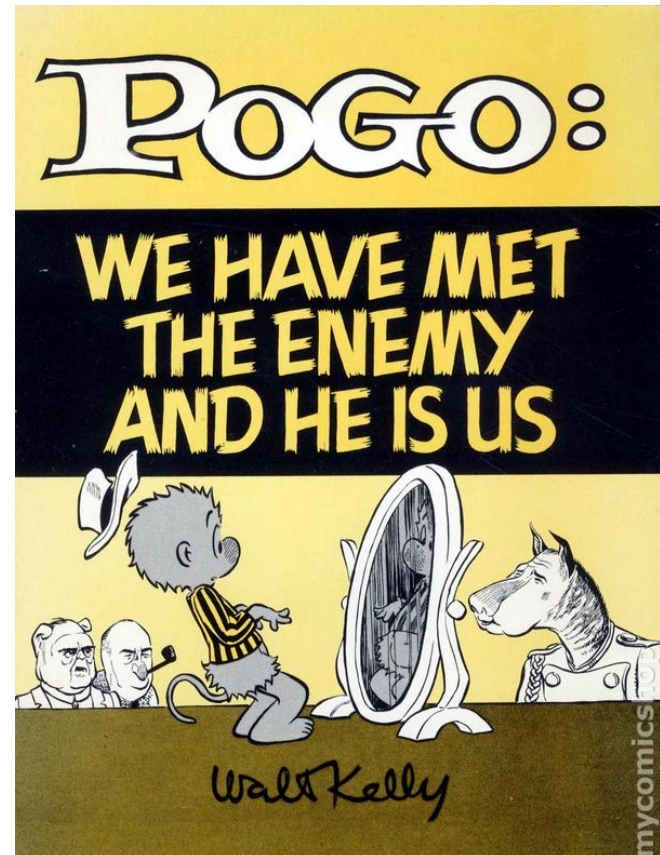
The Arid Lands

History, Power, Knowledge

Diana K. Davis

(Diana Davis 2016)

Forage Myopia



Forage Myopia Justification

Rangeland definitions

- An area where wild and domestic animals graze or browse on uncultivated vegetation (FAO 2000).
- Uncultivated land that provides the necessities of life for grazing and browsing animals (Holechek et al. 2011).
- Land on which natural vegetation is dominated by grasses and shrubs ... (UNCCD 2011).
- Land supporting indigenous vegetation that has the potential to be grazed... (SRM 2015).

These definitions minimize planetary value of rangelands!

(Briske 2017)

Crux of Stewardship Problem

Globalization, Population growth, Climate change

- External drivers place increasing demands on provisioning services, with minimal *additional* benefits to rangeland residents.
- Increasing demands on provisioning services decrease the supply of *total* ESs to global citizens.

Emphasis on provisioning services alone is insufficient to resolve the stewardship problem.

(Briske & Coppock 2023)

Stewardship Transformation



Enhance rangeland recognition and value

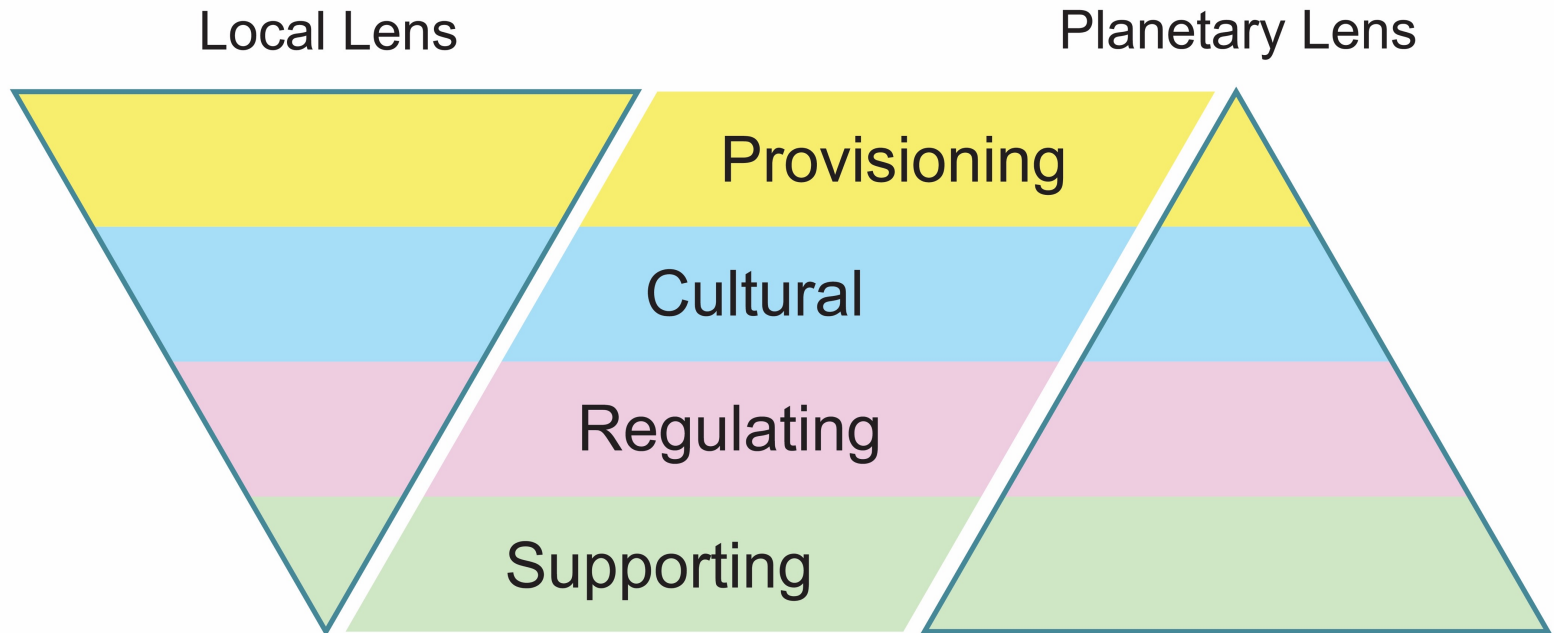
Identify stewardship challenges

Organize the global rangeland community

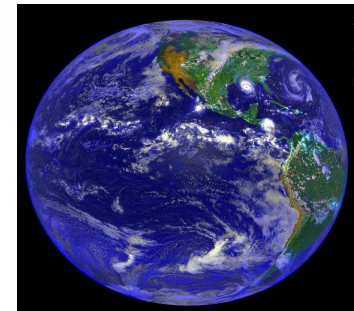
Engage with I-G organizations

Inform international donors

Inversion of ES Priorities



Ecosystem Services



(Briske & Coppock 2023)

Ecosystem Services Framework

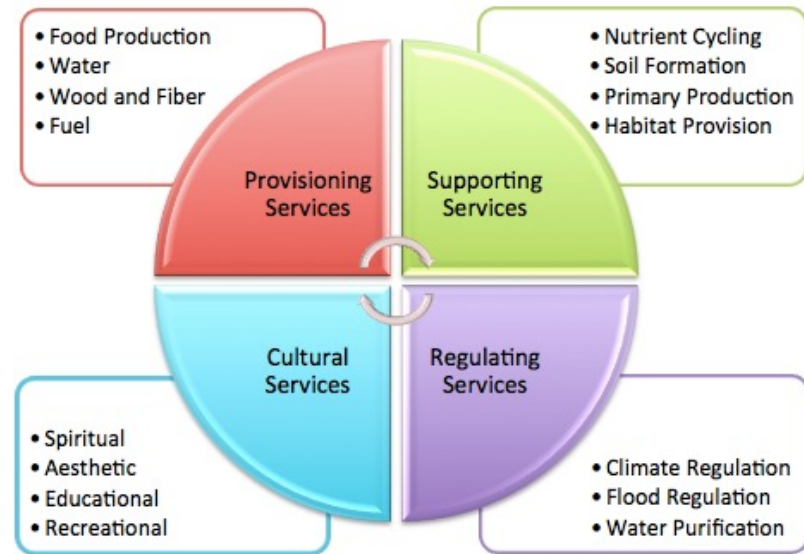
Ecosystem Services

Provisioning

Supporting

Regulating

Cultural



Source: Millenium Ecosystem Assessment, 2005.

Land Degradation Neutrality (SDG 15.3) – maintain or enhance land-based natural capital and associated ecosystem services.

U.N. Commission to Combat Desertification

Create a common currency among I-G organizations to enhance SDG 17 – Partnership for the Goals.

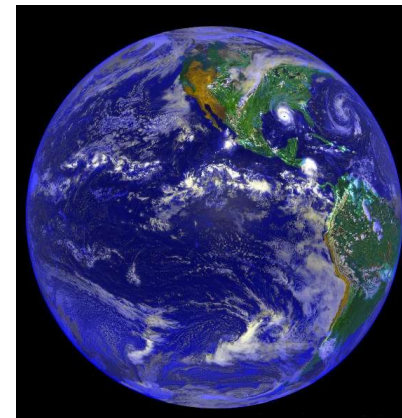
Designated Rangeland Organization

- Global coordination required to develop a legitimate, equitable stewardship strategy.
- Coordination of global investments commensurate with aggregate rangeland ecosystem services.
 - ✓ Biodiversity conservation
 - ✓ Climate change mitigation
 - ✓ Climate change reparations



Stewardship Transformation

- Promote recognition of aggregate rangeland value
- Create an ecosystem services framework
- Advocate for ecosystem service compensation
- Establish a designated rangeland I-G organization
- Elevate the societal position of pastoralism



Aspirational Proposal, but...

**WE CANNOT SOLVE OUR
PROBLEMS WITH THE
SAME THINKING
WE USED WHEN WE
CREATED THEM.**

- ALBERT EINSTEIN

