

Swine Breed Classification Guidelines

A collaboration by the Texas County Agricultural Agents Association, Vocational Agriculture Teachers Association of Texas, Animal Industries Committee, Texas FFA, Texas 4-H and Texas Pork Producers Association.



Please keep in mind, registration papers, breeder affidavits, or other paperwork is not considered in the classification process. Eligibility for the class is determined *only* by visual appraisal, as evaluated by classifiers appointed by show management.

CLASSIFICATION TERMS:

Ideal: Characteristics in combination that most accurately represent the breed.

Acceptable: Characteristics that represent the breed.

Discriminatory: Characteristics that are not reason for absolute disqualification but in combination with other discriminatory visual characteristics could lead to disqualification.

Absolute Disqualifications: Unfavorable visual characteristics resulting in removal from a breed division.

BERKSHIRE

Ideal

1. Predominantly black with erect ears, possessing Berkshire breed character with regards to skull shape and ear shape.
2. A Berkshire should have six white points: nose, each leg/foot and at end of tail (unless tail is docked).

Acceptable

1. An occasional splash of white skin/hair may appear on the body.
2. Three of the four legs/feet must be white.
3. Ear can have white on it (not full coverage).
4. Red or fawn hair, if over black or white skin pigmentation.
5. Ear deformity/ear folded in a backwards position towards hog's body/crinkled ear.

Discriminatory

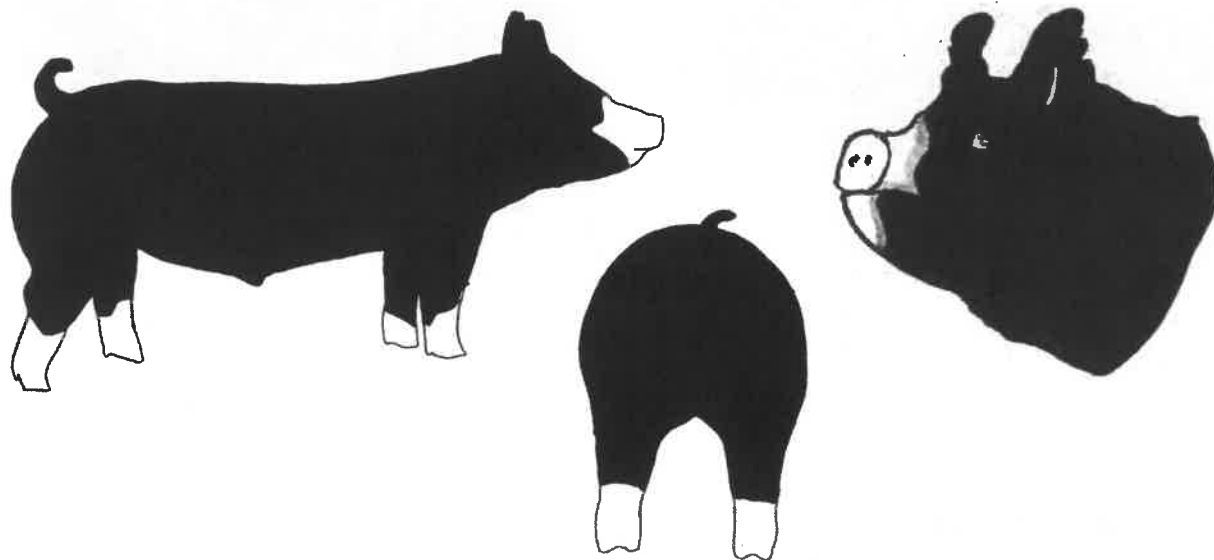
1. Gray pigmentation on the body (spotting or mottling pattern).
2. Moderate amount of white skin splashes.

Absolute Disqualification

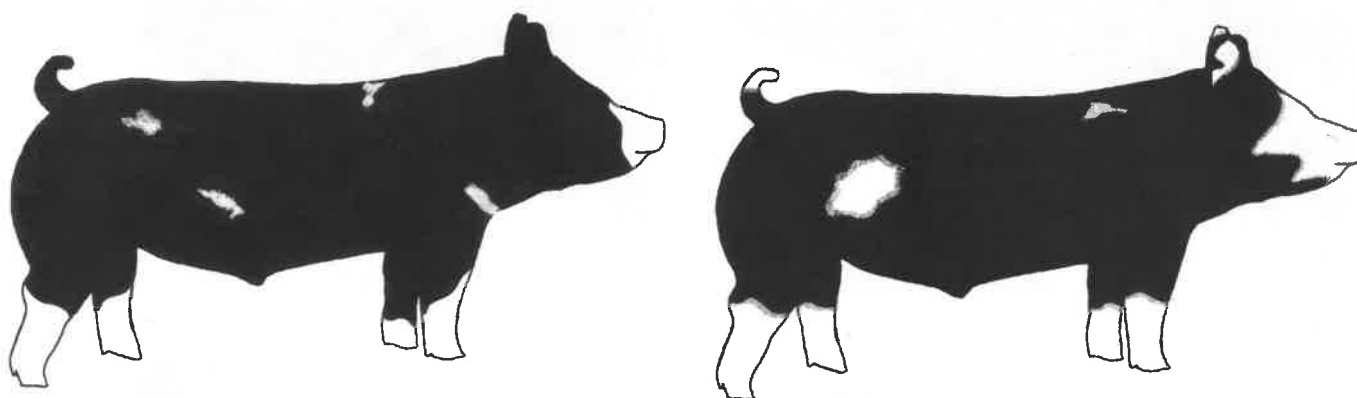
1. Solid white or solid black face from base of ear forward.
2. Solid black nose (white does not break rim of nose).
3. Solid white ear.
4. Excessive white on the body.
 - a. Full coverage of white coming up the lower one-third of the body (not counting legs) that extends from the base of the jaw thru sternum and lower body thru seam of the ham.
 - b. White splash extends from rear leg to upper hip.
5. White skin or hair that continuously encircles the body anywhere between the base of the ear and the base of the tail.
6. Any evidence of belt formation on the body.
7. Lacks breed character with regards to skull and/or ear shape.
8. Any evidence of physical tampering that would alter breed character.

BERKSHIRE

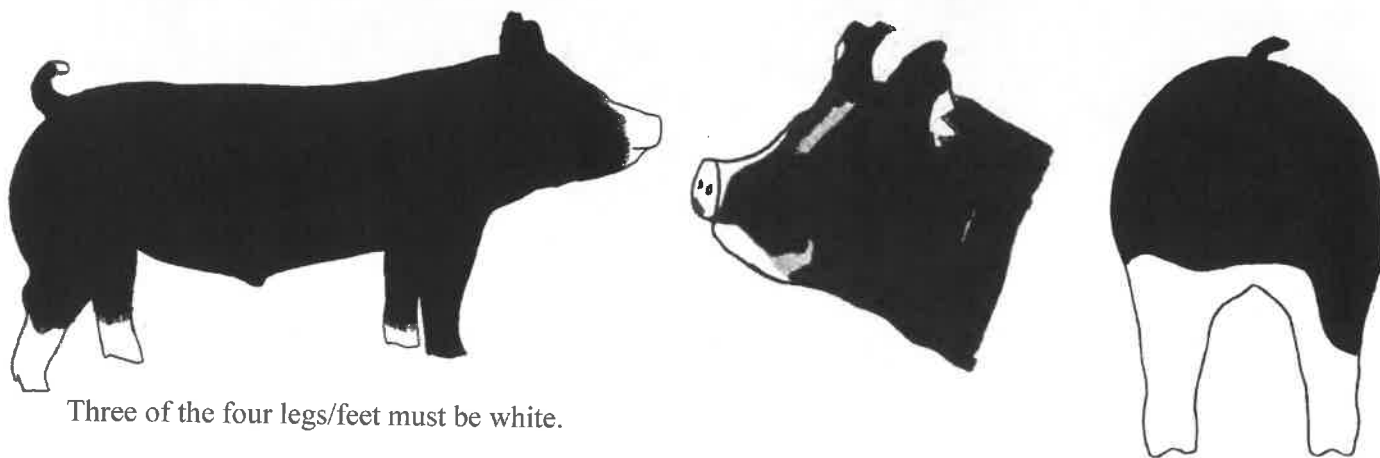
Ideal:



Acceptable:

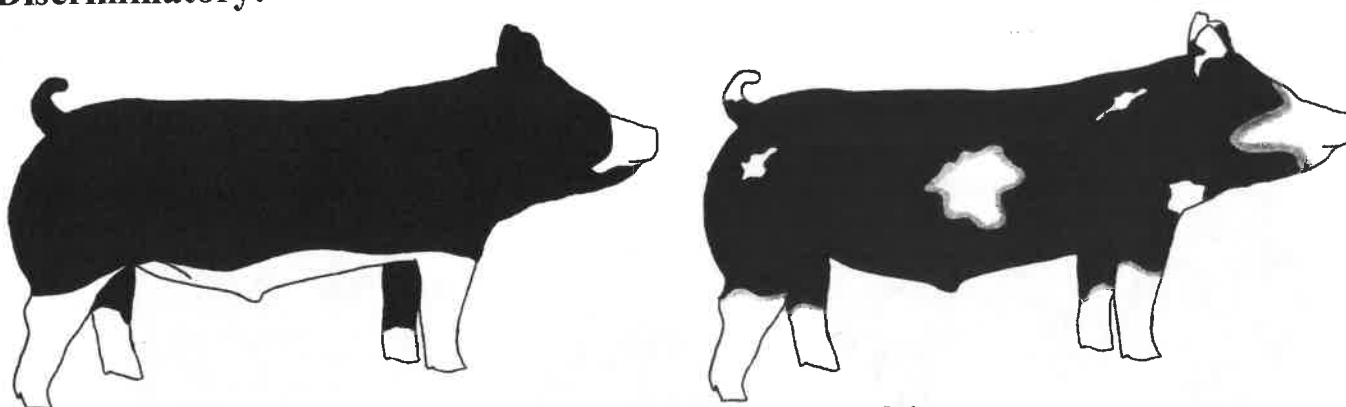


An occasional splash of white skin/hair may appear on the body.



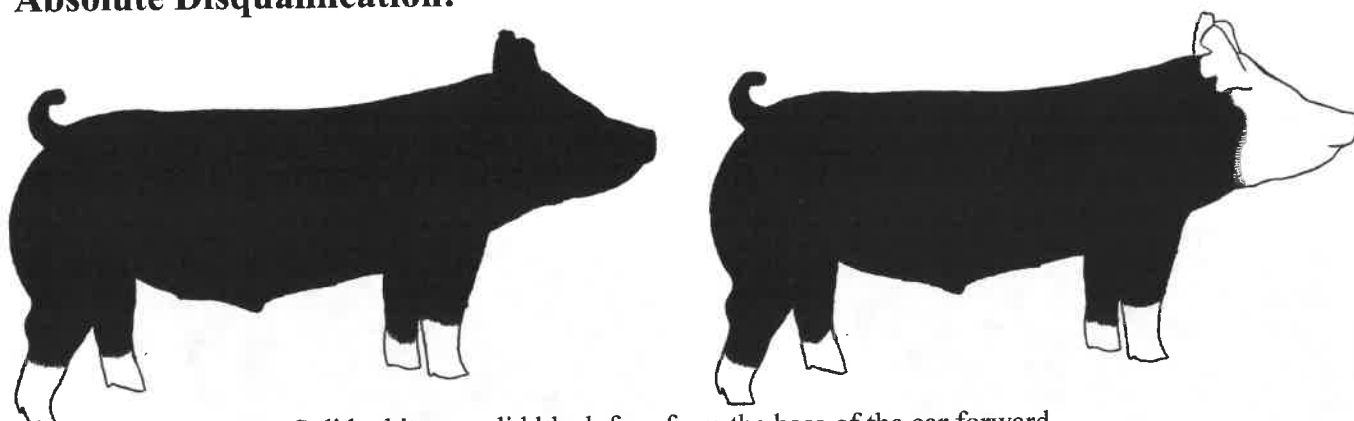
Three of the four legs/feet must be white.

Discriminatory:

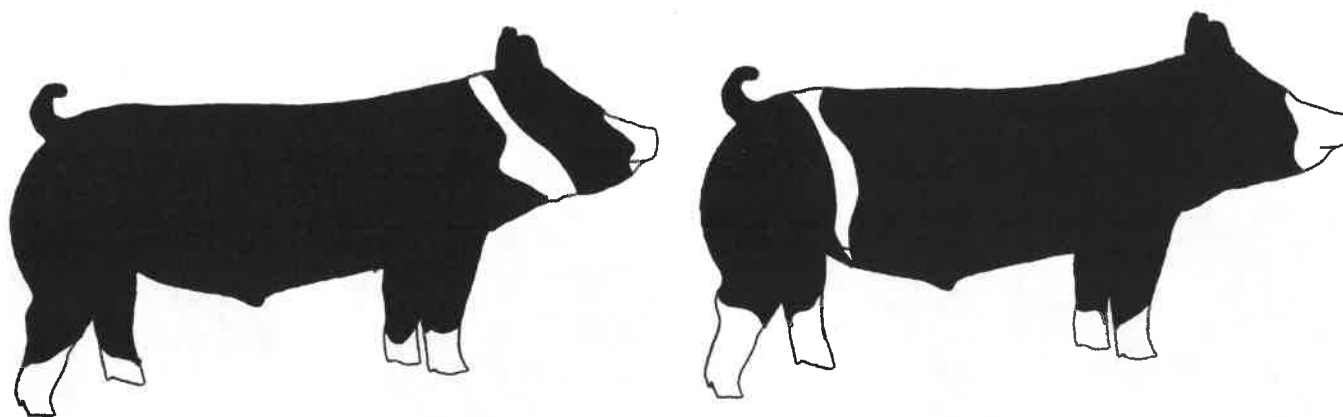


Moderate amount of white skin splashes.

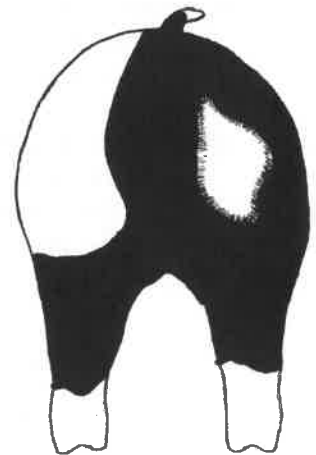
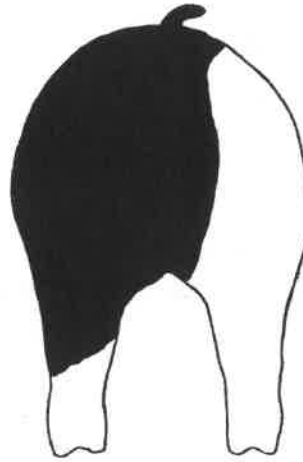
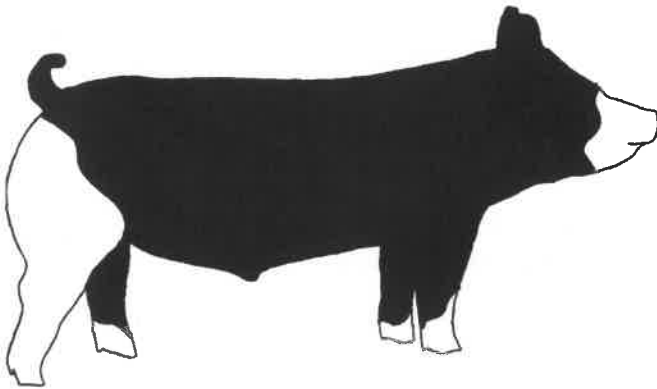
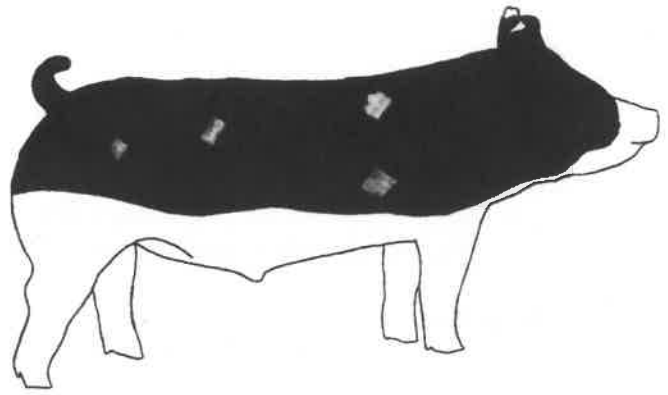
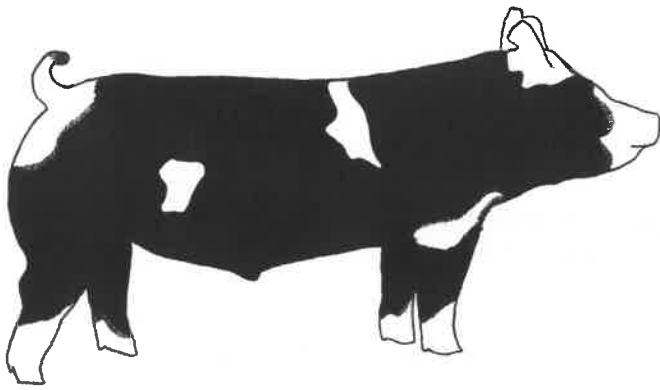
Absolute Disqualification:



Solid white or solid black face from the base of the ear forward.



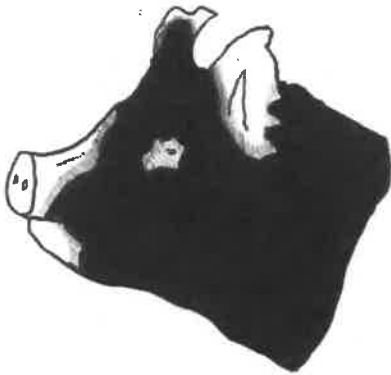
White skin or hair that continuously encircles the body anywhere between the base of the ear and the base of the tail.



Excessive white on the body.

a. Full coverage of white coming up the lower one-third of the body (not counting legs) that extends from the base of the jaw thru sternum and lower body thru seam of the ham.

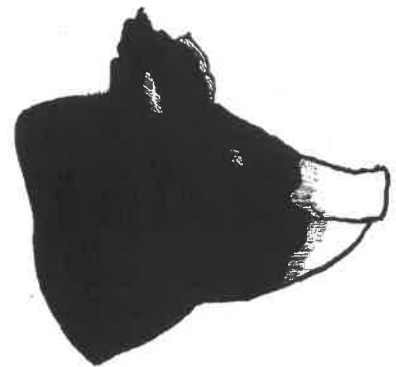
b. White splash extends from rear leg to upper hip.



Solid white ear.



Solid black nose (white does not break the rim of the nose).



Lacking Berkshire breed character with regards to skull shape and ear shape.

CHESTER WHITE

Ideal

1. Solid white in color possessing Chester White breed character.
2. Medium sized ears are down when hog is in a relaxed position.

Acceptable

1. Ear deformity/ear folded in a backwards position towards hog's body/crinkled ear.

Discriminatory

1. Partially erect/level ear (flighty).
2. Skin pigmentation.

Absolute Disqualification

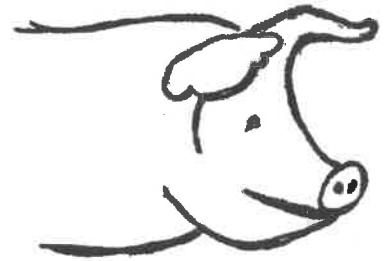
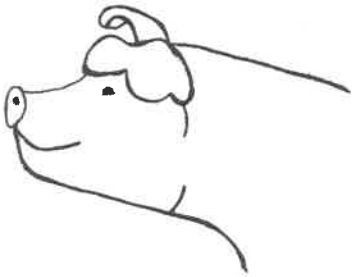
1. Erect ears.
2. Colored hair.
3. Color on the skin, cumulatively larger than a U.S. minted silver dollar.
4. Any evidence of physical tampering that would alter breed character.

CHESTER WHITE

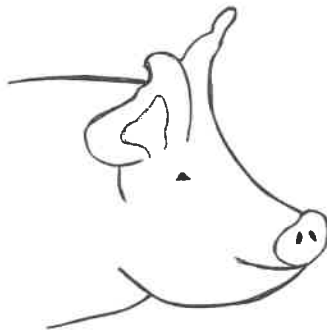
Ideal:



Discriminatory:



Absolute Disqualification:



DUROC

Ideal

1. Must be red in color, possessing Duroc breed character.
2. Ears are down when hog is in a relaxed position.

Acceptable

1. Acceptable colors range from light red to dark brown.
2. Ear deformity/ear folded in a backwards position towards hog's body/crinkled ear.

Discriminatory

1. Minimal amounts of black hair.
2. Black spots on the skin under two inches in diameter.
3. Partially erect/level ears (flighty).

Absolute Disqualifications

1. Excessive amounts of black hair.
2. White hair.
3. White skin on the body or legs, or that extends over the rim of the nose.
4. Four (4) or more black spots on the skin, any of which are larger than two (2) inches in diameter.
5. Evidence of a belt.
6. Erect ears.
7. Any evidence of physical tampering that would alter breed character.

DUROC

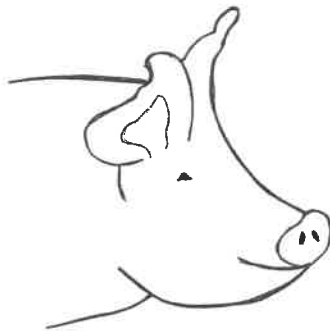
Ideal:



Discriminatory:



Absolute Disqualification:



HAMPSHIRE

Ideal

1. Black in color with a full white belt over the shoulders encompassing both front legs/feet.
2. Erect ears.
3. Possess Hampshire breed character with regards to skull shape and ear shape.

Acceptable

1. Black head with a white body, with evidence of pigment and freckling down the top.
2. White belt starting on a front foot/leg; belt partially encircles body extending to at least the chest floor (half belt).
3. Freckling in the belt.
4. Ear deformity/ear folded in a backwards position towards hog's body/crinkled ear.

Discriminatory

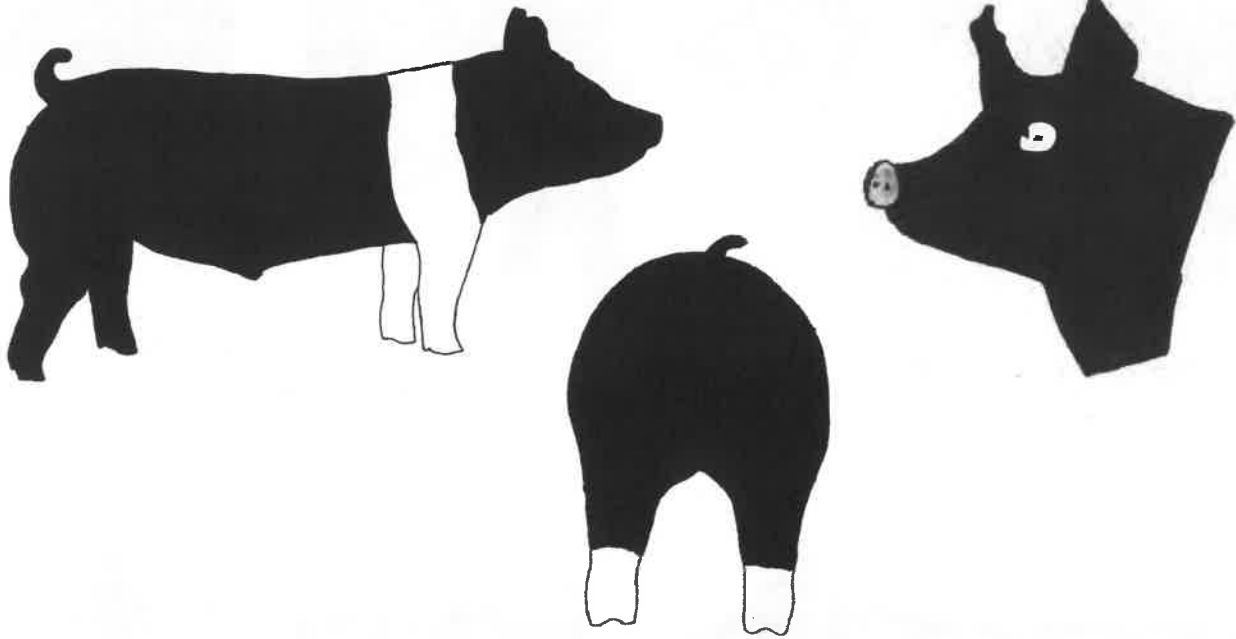
1. Large spots within the belt.
2. Belt is in front or behind of a solid black front leg.
3. If belt v's and runs towards the poll (base of the ear).
4. White tip on tail, if docked.
5. White on rear leg extends to the base of the ham.

Absolute Disqualification

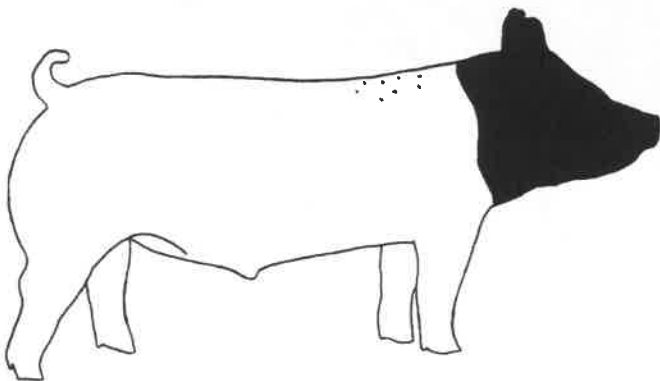
1. Streaking or evidence of white on forehead.
2. White skin extends over the rim of the nose.
3. When mouth is closed, the white under the chin cannot exceed what a U.S. minted quarter will cover.
4. Black head with a white body without freckles or pigmentation.
5. Belt extends past the sheath (sheath must be black).
6. Excessive frosting or white hair outside the belt.
7. Red hair.
8. Droopy or floppy ears.
9. Any evidence of physical tampering that would alter breed character.

HAMPSHIRE

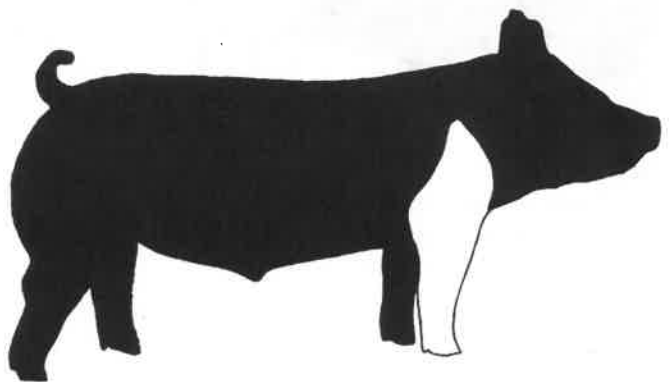
Ideal:



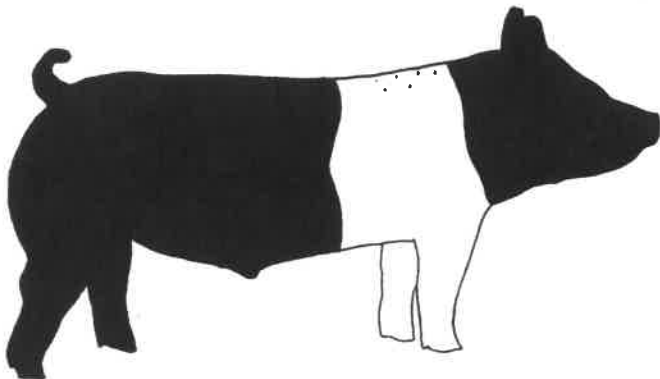
Acceptable:



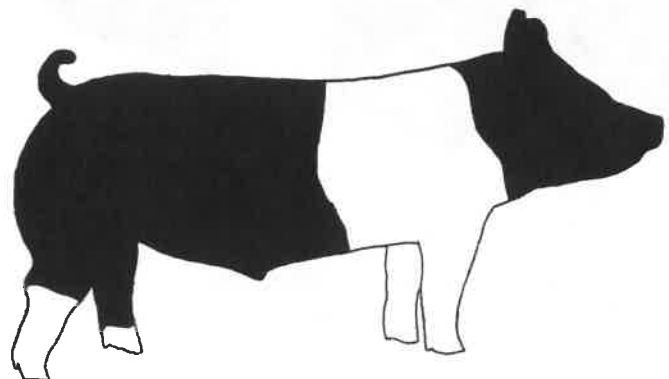
Black head with a white body, with evidence of pigment and freckling down the top.



White belt starting on a front foot/leg; belt partially encircles body extending to at least the chest floor (half belt).

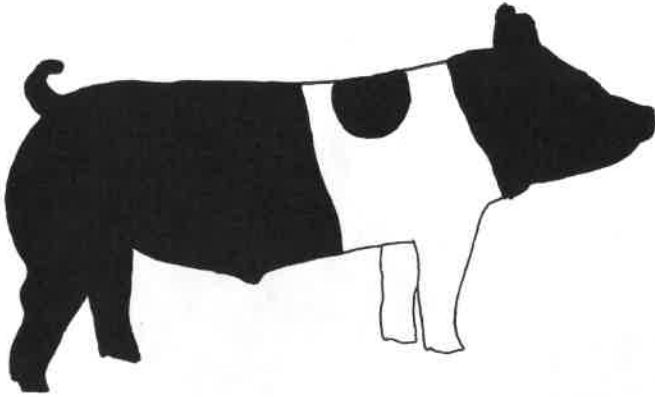


Freckling in the belt.

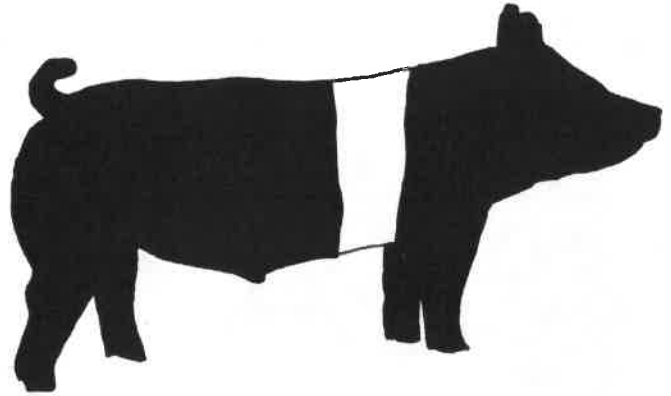


White on rear leg is below the base of the ham.

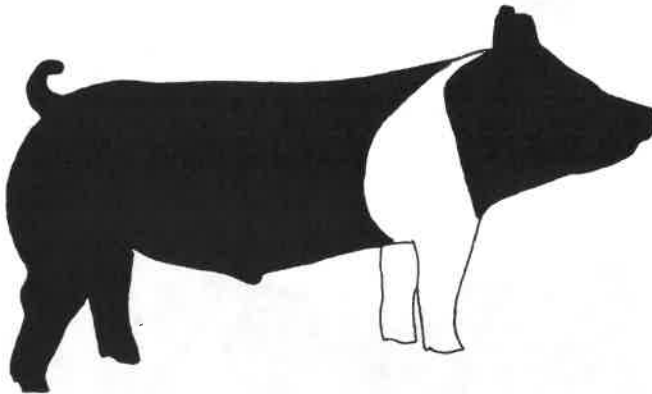
Discriminatory:



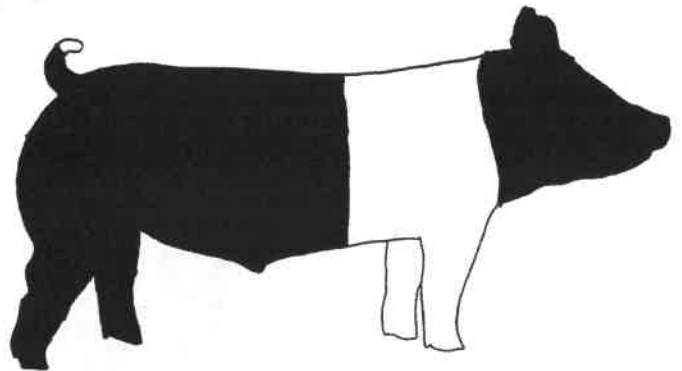
Large spots within the belt.



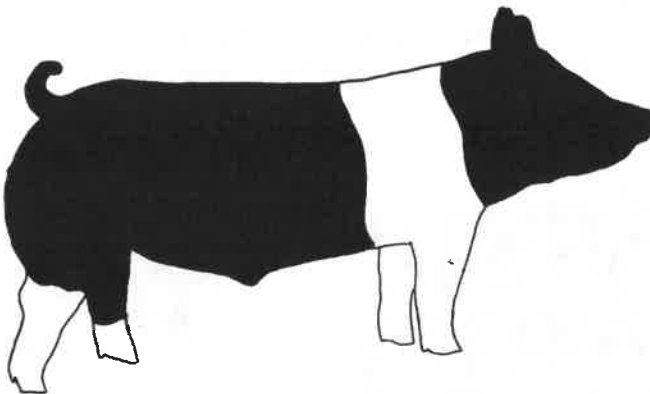
Belt is in front or behind of a solid black front leg.



If belt v's and runs towards the poll (base of the ear).



White tip on tail, if docked.



White on rear leg extends to the base of the ham.

Absolute Disqualification:



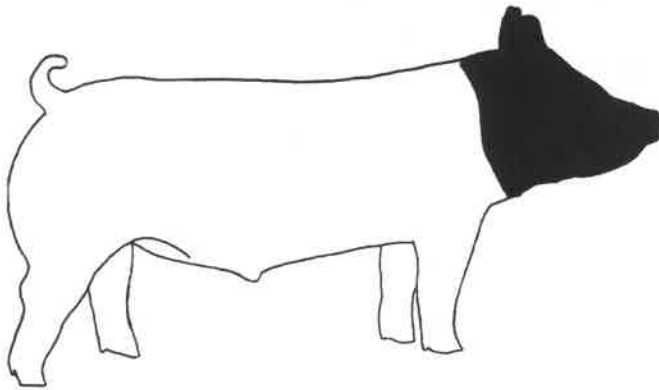
Streaking or evidence of white on forehead.



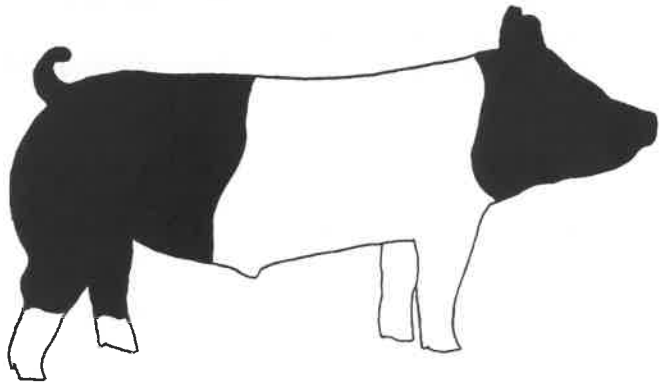
White skin extends over the rim of the nose.



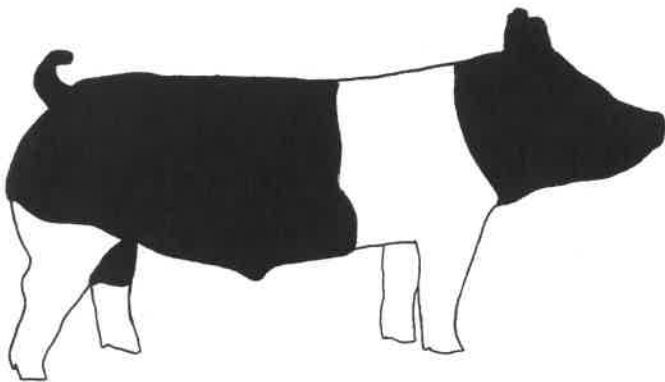
White under the chin cannot exceed what a U.S. minted quarter will cover.



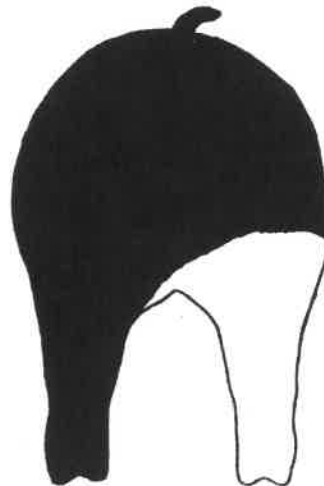
Black head with a white body without freckles or pigmentation.



Belt extends past the sheath (sheath must be black).



White on rear leg extends above the base of the ham.



LANDRACE

Ideal

1. Must be solid white possessing Landrace breed character.
2. Ears droop and slant forward coming to a sharper point.

Acceptable

1. Ear deformity/ear folded in a backwards position towards hog's body/crinkled ear.

Discriminatory

1. Short rounded ears.
2. Short snout mimicking that of a Chester White.

Absolute Disqualification

1. Erect ears.
2. Any hair color other than white.
3. More than 3 spots of skin pigmentation; each individual spot cannot be larger than a U.S. minted quarter.
4. Any evidence of physical tampering that would alter breed character.

LANDRACE

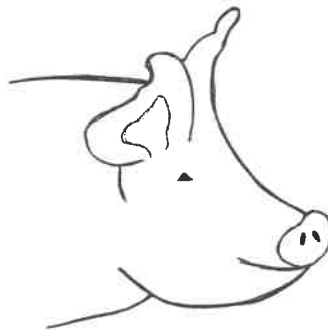
Ideal:



Discriminatory:



Absolute Disqualification:



POLAND CHINA

Ideal

1. Predominantly black possessing Poland China breed character.
2. A Poland China should have six white points: nose, each leg/foot and at the end of the tail (unless tail is docked).
3. Ears are down when hog is in a relaxed position.

Acceptable

1. A slight continuation of white from the legs to the body.
2. Ear can have white on it.
3. Three of the four legs must be white.
4. May have an occasional splash of white on the body.
5. Hair and skin texture can vary from coarse to thin, and color can vary from dark black to ashy/pale.
6. Ear deformity/ear folded in a backwards position towards hog's body/crinkled ear.

Discriminatory

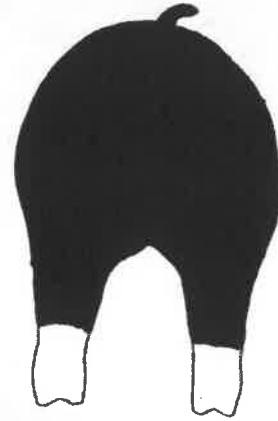
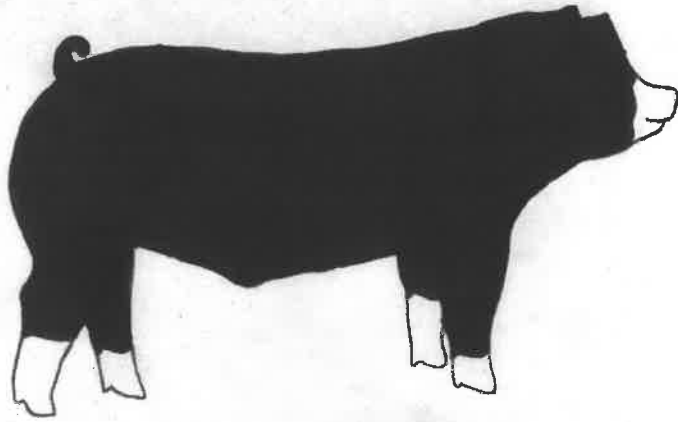
1. Partially erect/level ears (flighty).
2. A moderate continuation of white from the legs to the body.
3. Moderate freestanding white, not attached to a leg.

Absolute Disqualification

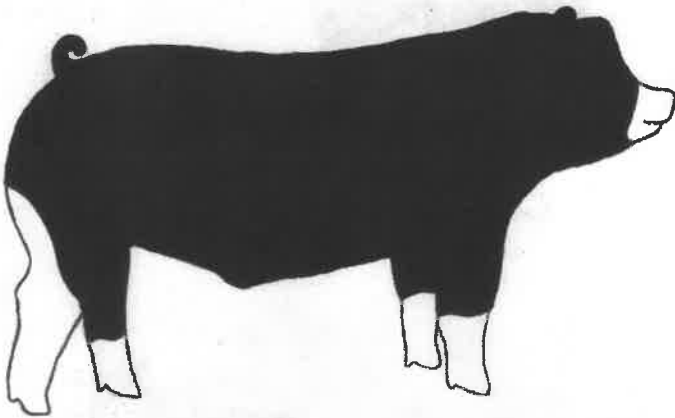
1. Erect ears.
2. Solid white or solid black face.
3. More than one solid black leg.
4. If the white on a solid white ear goes past the base of the ear.
5. An excessive continuation of white from the legs, encompassing the upper hip or shoulder.
6. Excessive freestanding white, not attached to a leg.
7. Evidence of belt formation.
8. Red or sandy hair.
9. Any evidence of physical tampering that would alter breed character.

POLAND CHINA

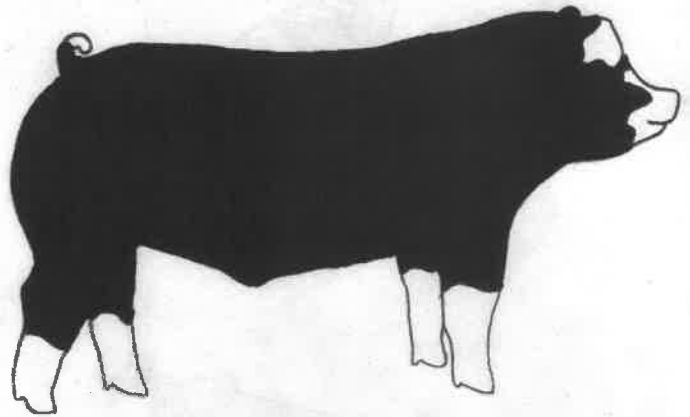
Ideal:



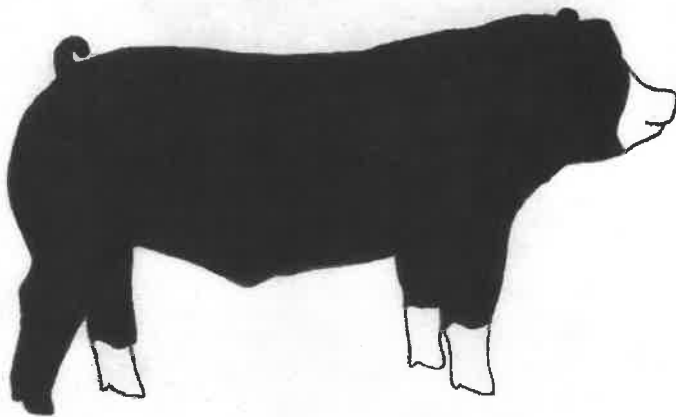
Acceptable:



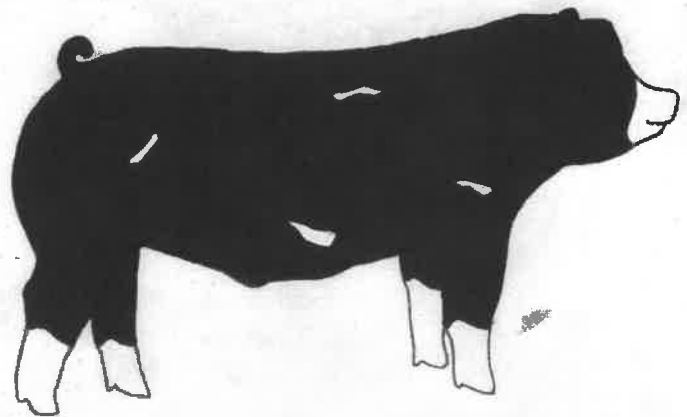
A slight continuation of white from the legs to the body.



Ear can have white on it.

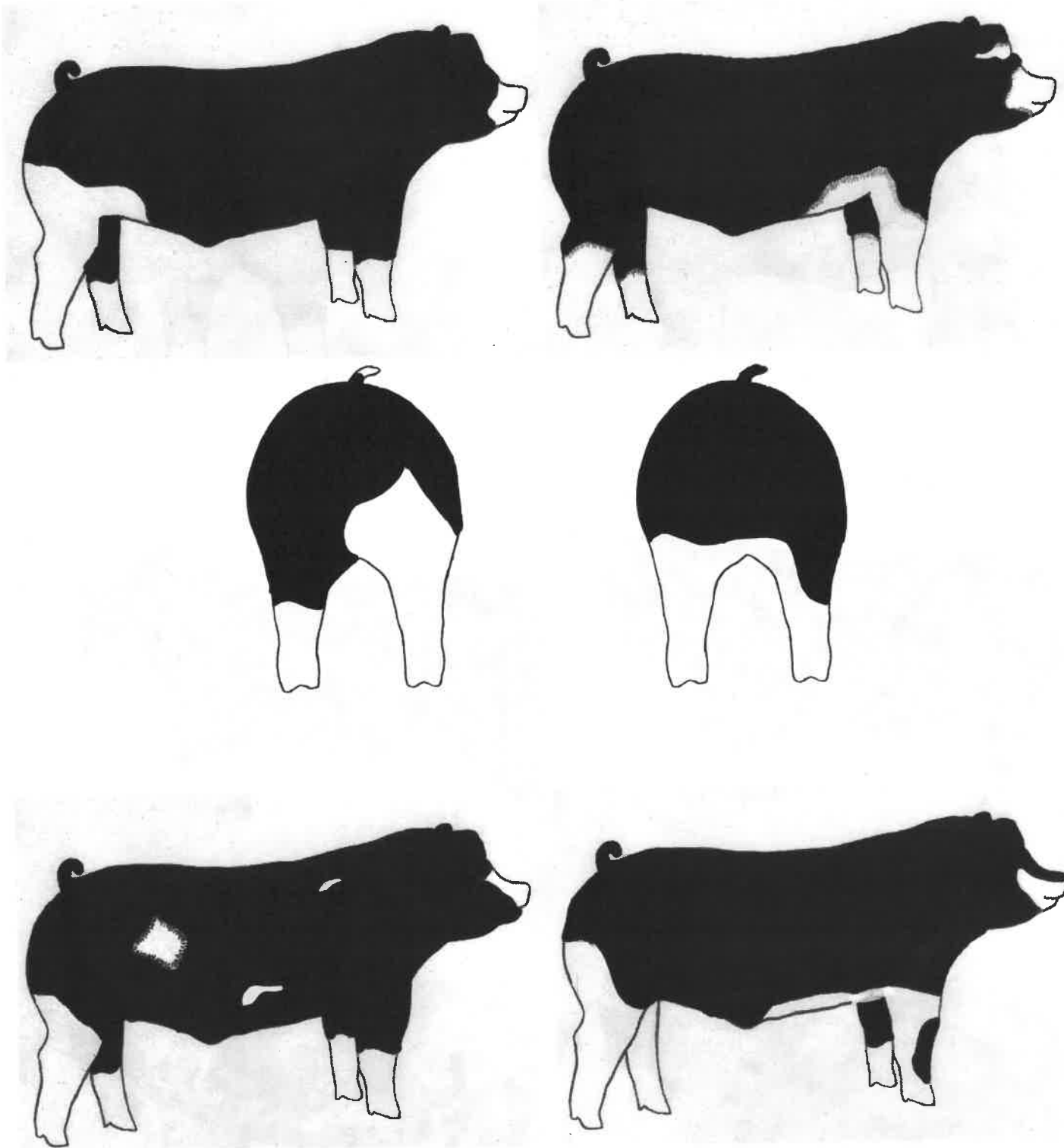


Three of the four legs must be white.



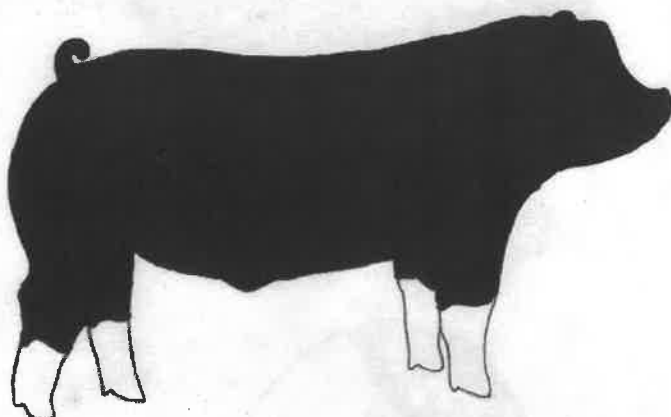
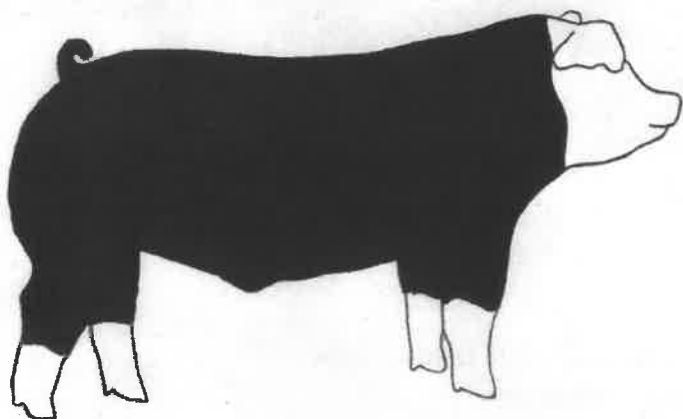
May have an occasional splash of white on the body.

Discriminatory:

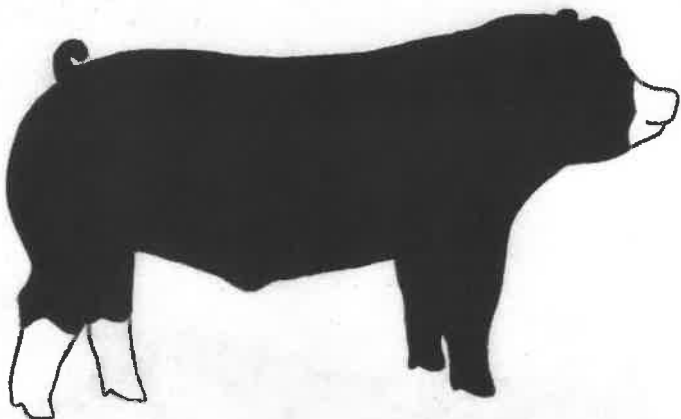


A moderate continuation of white from the legs to the body or
Moderate freestanding white, not attached to a leg.

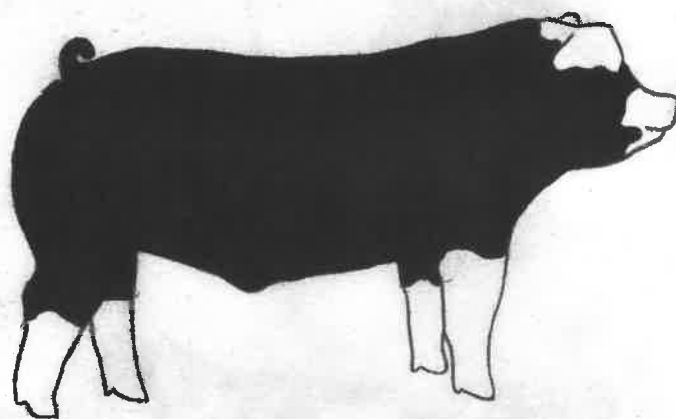
Absolute Disqualification:



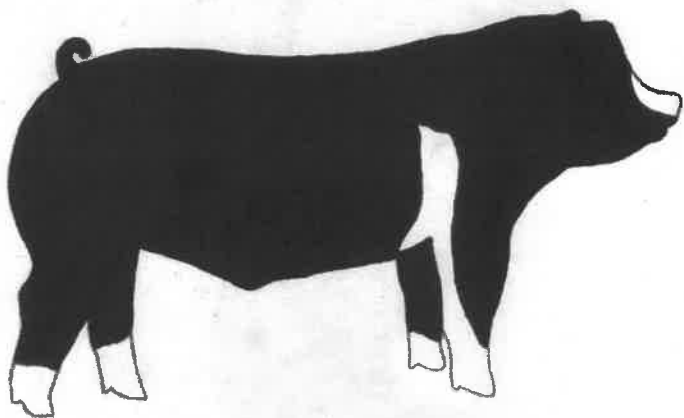
Solid white or solid black face.



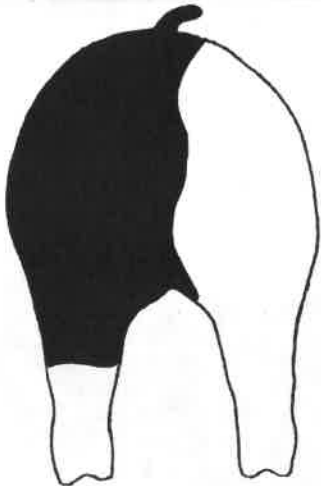
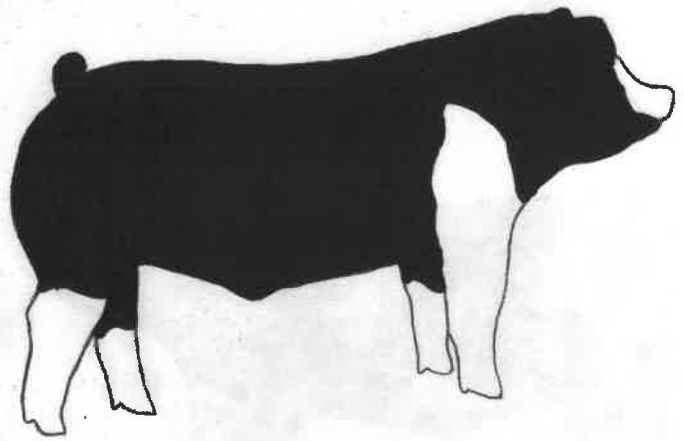
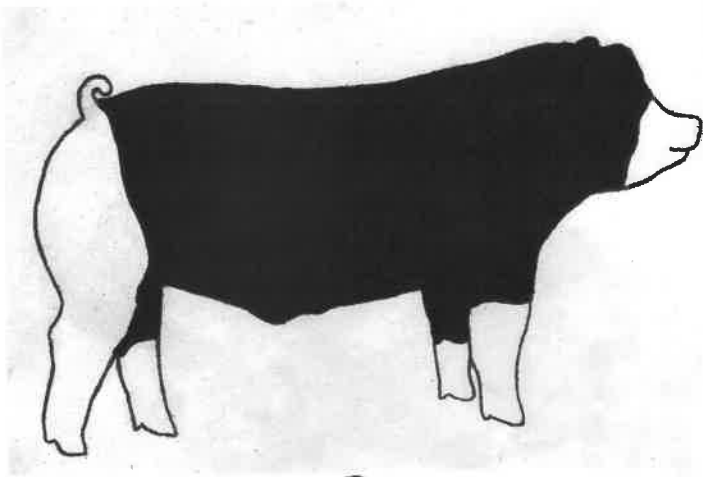
More than one solid black leg.



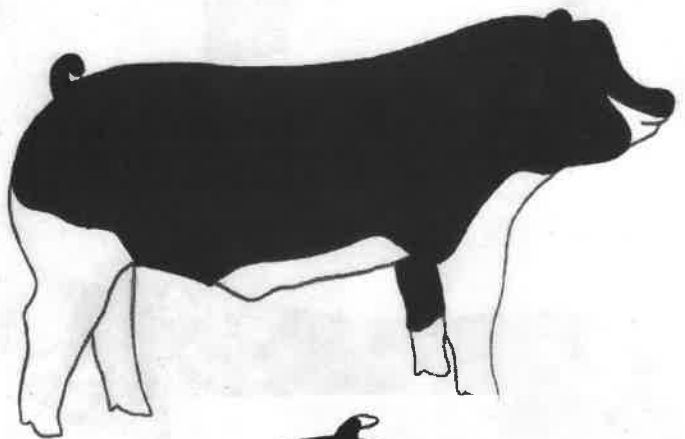
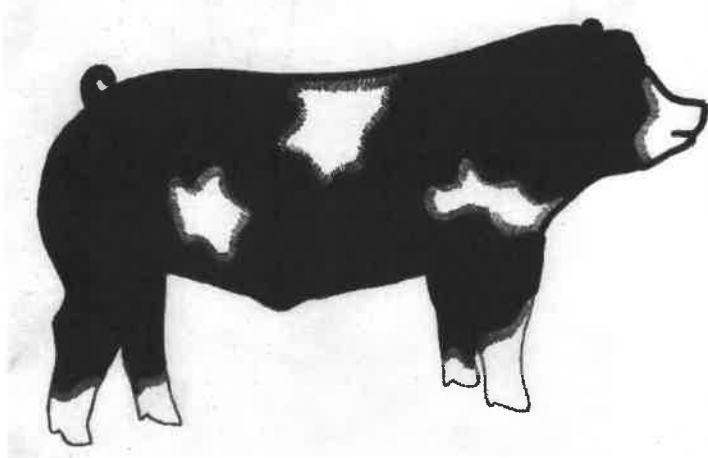
If the white on a solid white ear goes past the base of the ear.



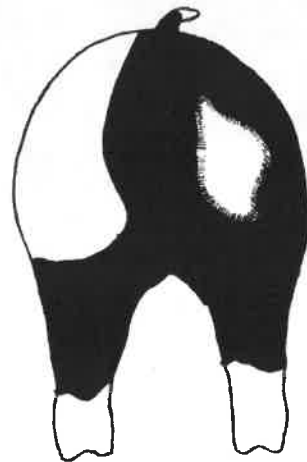
Evidence of belt formation.



An excessive continuation of white from the legs, encompassing the upper hip or shoulder.



Excessive freestanding white, not attached to a leg.



POLAND CHINA

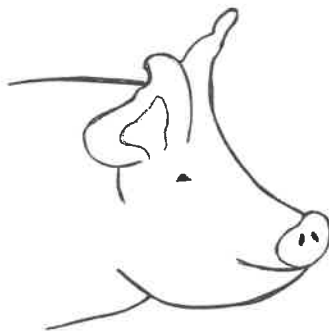
Ideal:



Discriminatory:



Absolute Disqualification:



SPOTTED

Ideal

1. Must be black and white, possessing Spotted breed character.
2. Ears are down when hog is in a relaxed position.

Acceptable

1. Predominantly black with white spots or predominantly white with black spots.
2. Ear deformity/ear folded in a backwards position towards hog's body/crinkled ear.

Discriminatory

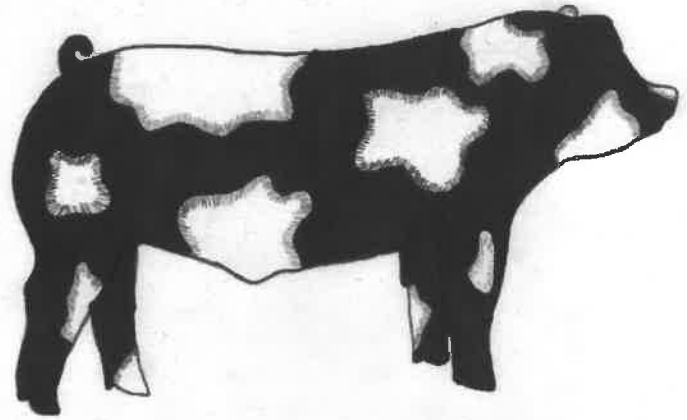
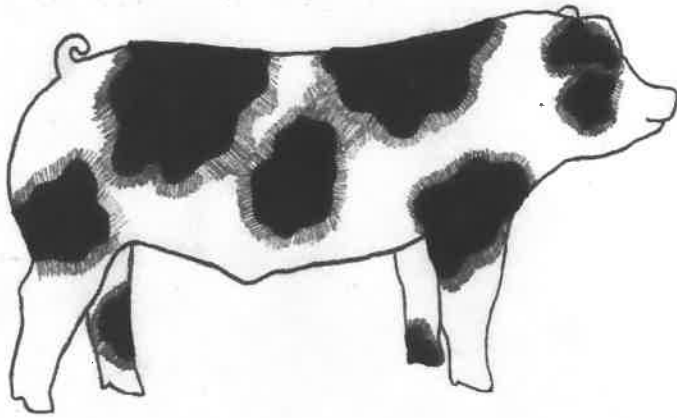
1. Partially erect/level ears (flighty).
2. Moderate brown spots.

Absolute Disqualification

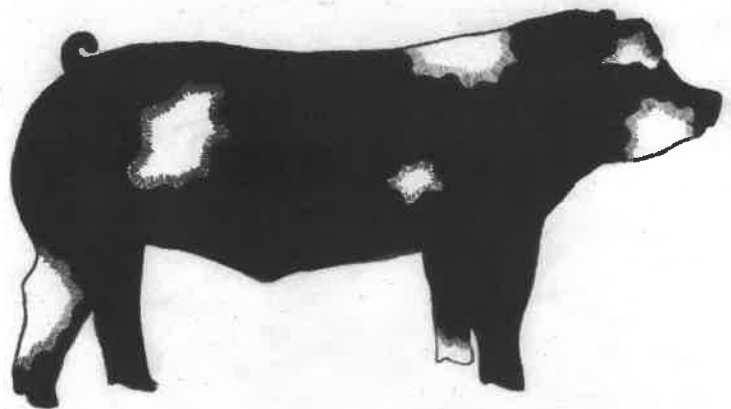
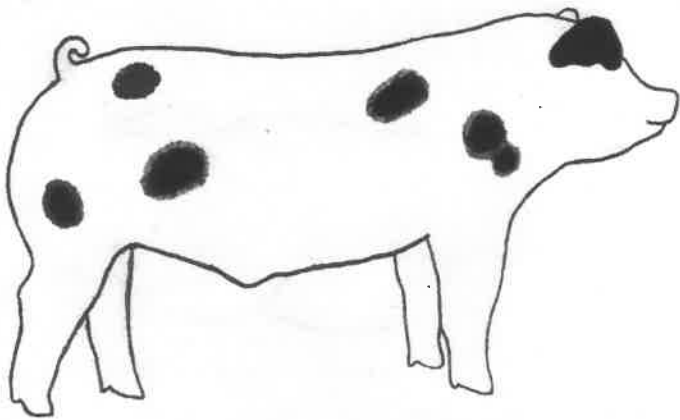
1. Erect ears.
2. Solid black head from base of ears forward.
3. Distinct white belt pattern (hair or skin) encircling and extending down and onto each shoulder.
4. Red hair.
5. Excessive brown spots.
6. Any evidence of physical tampering that would alter breed character.

SPOTTED

Ideal:



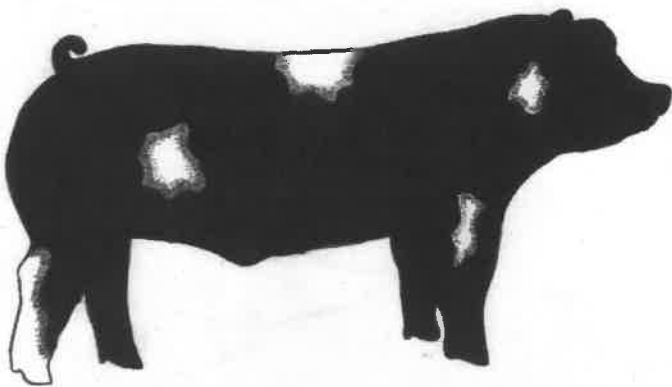
Acceptable:



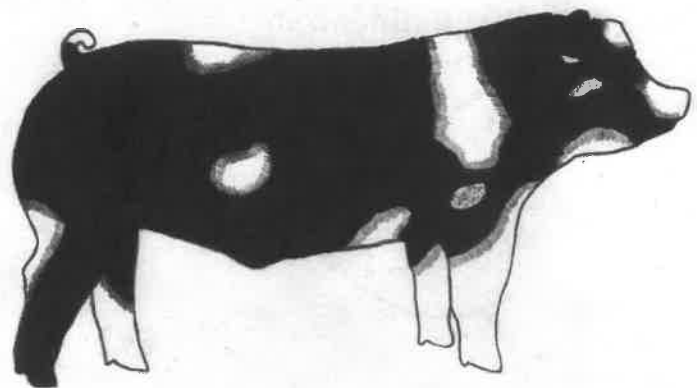
Predominantly white with black spots.

Predominantly black with white spots.

Absolute Disqualification:



Solid black head from base of ears forward.



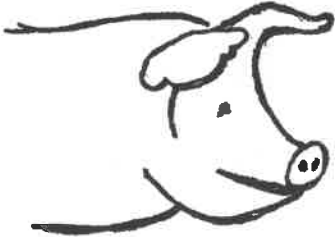
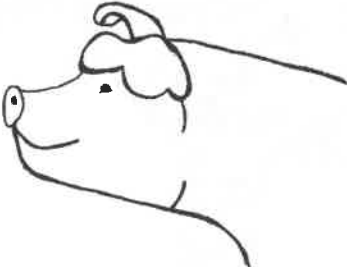
Distinct white belt pattern (hair or skin) encircling and extending down and onto each shoulder.

SPOTTED

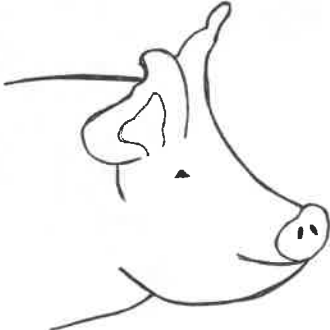
Ideal:



Discriminatory:



Absolute Disqualification:



YORKSHIRE

Ideal

1. Must be completely white in color with erect ears, possessing Yorkshire breed character.

Acceptable

1. Ear deformity/ear folded in a backwards position towards hog's body/crinkled ear.

Discriminatory

1. Excessively large or wavy ears.
2. Color pigmentation (on body):
 - a. Two individual pigmentation spots of which neither can be larger than a U.S. minted dime.
 - b. One pigmentation spot cannot be larger than a U.S. minted quarter.

Absolute Disqualification

1. Any hair color that is NOT white.
2. Broken/down ears.
3. Combined pigmentation spots that exceed a U.S. minted silver dollar.
4. Any series of dots that indicate masking.
5. Any evidence of physical tampering that would alter breed character.

CROSSBRED

Recommendations for Rodeo Austin and the San Angelo Stock Show.

Light Cross:

1. Any pigs with white and/or blue only.

Dark Cross/other cross:

1. All other colors (i.e. black, red and sandy).
2. Excluding solid white or blue.

No recommendations for the Houston Livestock Show, San Antonio Stock Show, Fort Worth Stock Show or State Fair of Texas based upon current breed and class requirements.