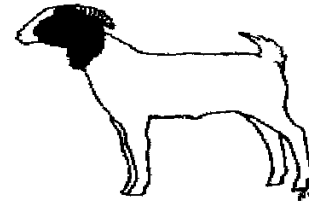
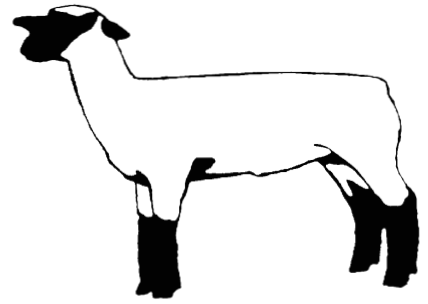


**STATE & CO.  
LAMB  
&  
GOAT  
VALIDATION**



Oct. 14— Academy FFA, Bartlett FFA, Belton FFA, Ellison FFA, Harker Heights FFA, Killeen Career Center, Killeen 4-H/FFA, Maxdale 4-H, Salado 4-H/FFA, Temple FFA, Shoemaker FFA, Tigertown 4-H, Trimmier 4-H & Stampede Creek 4H.

Oct. 27— Barking Buddies, Bell Co. Horse, For His Glory 4-H, Hares & Hounds 4-H, Holland 4-H/FFA, Oenaville 4-H, Rogers 4-H/FFA.

**STATE VALIDATION**

**WE NEED ALL AG TEACHERS AND PARENTS TO BE THERE TO SIGN FORMS AND TO DRAW A MAP WHERE ANIMALS ARE BEING KEPT. IF PARENT CAN'T BE THERE YOU MUST FILL OUT A PARENTAL WAIVER FORM BEFORE VALIDATION.**

**AT THE BELL COUNTY EXPO CENTER, BELTON, TEXAS**

**CONTACTS: HEIDI PRUDE—[Heidi.prude@ag.tamu.edu](mailto:Heidi.prude@ag.tamu.edu) or 254-933-5305 or  
PAM REAVIS - [pcreavis@ag.tamu.edu](mailto:pcreavis@ag.tamu.edu) — 254-933-5309**

**Oct. 14 & 27, 2014 - Time: 5:00 - 8:00 P.M.**

**Cost: \$12.00 for State \$5.00 for County  
(if you validate for State it covers county to.)**