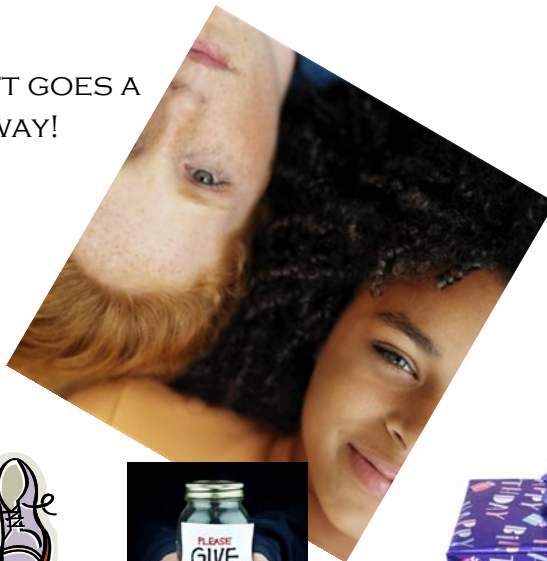




SHOE BOX GIFTS COMMUNITY SERVICE PROJECT



A LITTLE GIFT GOES A LONG WAY!



Shoe box

\$7 donation

Gifts



WHAT YOU CAN PUT IN IT..

TOYS: small cars, balls, dolls, stuffed animals, kazoos, harmonicas, yo-yos, jump ropes, small "etch-a-sketch", Slinky, etc..



SCHOOL SUPPLIES: PENS, PENCILS, ETC..

Hygiene Items: tooth brush, toothpaste, mild bar of soap (in a plastic bag), comb, washcloth, etc..

Other: hard candy, lollipops (please double bag the candy), mints, gum, T-shirts, socks, ball caps, sunglasses, hair clips, toy jewelry, watches, flashlights (with extra batteries), etc.



A personal, handwritten note to the child from you and your family in a (separate envelope) would be an added surprise



PLEASE DO NOT PUT IN: used or damaged items, war related items, knives or military figures, chocolate or food; liquid or lotions; medications or vitamins; breakable items; aerosol cans. **DEADLINE:** October 13, 2012



HOW YOU CAN GET INVOLVED!

- ◆ **Boy or Girl??**
Determine whether this gift will be for a boy or a girl and then choose the age category: 2-4, 5-9, or 10-14.
- ◆ Find the items you would want in the shoe box.
- ◆ Items can be brought to the Hunter Spectacular, October 13, 6pm, Expo Assembly Hall or brought ahead to 1605 N. Main Street, Rm 102, Belton, TX
- ◆ If you do not want to collect items you could give a \$7 donation. (Make checks payable to: Bell 4-H



PLEASE CONTACT THIS NUMBER IF YOU HAVE ANY QUESTIONS:
254-933-5305