

Bell County Staff:

Jackie McLaughlin

County Extension
Agent

Family & Consumer
Sciences

Whitney Grantham

County Extension Agent
Natural Resources

Sheryl Raley

County Extension Agent
4-H & Youth
Development

Lyle Zoeller

County Extension Agent
Agriculture

Sheryl Austin

Cooperative Extension—
Family & Consumer
Science

Tonya Elliott

4-H Program Assistant

Emma Merlot

BLT Assistant

Bell County 4-H Exchange Club hosts 4-H Exchange

Bell County 4-H Exchange Club hosts 4-H Exchange members from another state biannually. 4-H members involved gain knowledge about their own state, county, history, and agriculture in Texas. Additionally, participants learn about Texas culture and how it compares to culture across the United States. Participants who host other members gain lifelong skills in multicultural diversity, time management, and Texas hospitality. Finally, members of 4-H Exchange program gain public speaking skills through presentations made to local organizations and writing skills to create a journal about their experiences throughout the two year term.

During the week of July 2nd, 2016, twelve Bell County 4-H members hosted twelve 4-H members and three adult chaperones from Thurston County, Washington. The group of 4-H members and chaperones toured 44 Farms in Cameron, Cathey Creeks Ranch in Cyclone, and Ranly Farms in Seaton. In addition to hands on learning experiences, 4-H Exchange members learned about Texas History through tours of Bell County Museum, Temple Railroad & Heritage Museum, Czech Heritage Museum and Genealogy Center, Texas Sports Hall of Fame, Texas Ranger Hall of Fame and Museum, Dr. Pepper Museum, Waco Mammoth National Monument, Alamo, Tower of Americans, and Historic Riverwalk. Washington guests were also introduced to Bell County traditions which included 4th of July Parade, PRCA Rodeo, Festival on Nolan Creek, and fireworks.

In 2017, the Bell County 4-H members will be traveling to Washington to reunite with their new friends and learn about Washington 4-H Program. Bell County 4-H'ers will also learn about United States History in Seattle and the significance Washington has in our history.

Exchange is selling freezer full of meat tickets now through Saturday at BCYF rodeo. Email Kathy Ide at ckide3@yahoo.com if interested in purchasing one or several.

1605 N. Main, Room 102

Belton, TX 76513

Phone: (254)933-5305

Fax: (254)933-5312

E-mail: bell@ag.tamu.edu Website: <http://agrilife.org/bell4h/>



18 USC 707

4-H Enrollment

4-H Enrollment started **August 15th!!!** All enrollment is done via 4-H Connect. You can access 4-H Connect by going to our 4-H website at <http://agrillife.org/bell4h/> and clicking on the 4-H Connect icon.

To maintain the level of programming and opportunities in the Texas 4-H and Youth Development Program, an annual participant fee is implemented for each 4-H member (excluding Clover Kids). The participant fee is \$20 if enrolled from **August 15th to October 31st**, November 1st the participant fee will increase to \$25.

Please do not worry if you are still pending at the county level once you have enrolled. The county office will try to keep up as best as we can by approving them at least once a week. As long as you complete your enrollment, you are in the system and good for enrollment and BCYF requirements. Enrollment dues must be paid by an electronic payment.

For instructions on how to enroll, please visit:

<http://agrillife.org/bell4h/4-h-enrollment-guidelines/4-h-enrollment-information/>

All volunteers who enroll will be charged \$5.00 each volunteer. This covers your screening for the year. All volunteers will have to enroll each year. Club Managers must enroll ASAP!

If you have further questions, please contact the County Extension Office at: 254-933-5305

BCYF Requirements

Bell County Youth Fair

Below are the new changes regarding BCYF. Please make sure you have a sign in sheet at each meeting and announce to all members to sign in before, during, and after the meeting.

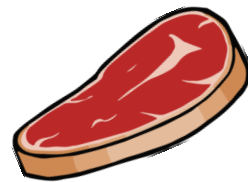
· The BCYF has a website in which everything will be posted including the new fair book, entry forms, superintendent's names and phone numbers, score sheets, and other information: <http://agrillife.org/bellctyyouthfair/>

- You **MUST** attend 2 meetings to participate in the BCYF. You MUST sign in on the sign in sheets for it to count.
- 2 meetings will be allowed from **August 1, 2016 to December 31, 2016** this year. No meetings will be allowed in January to use for the 2 meeting rule.
- All 4-H members **MUST** be enrolled by **December 1, 2016** to participate in the BCYF. However, the fee will go up after October 31st so do it quickly.

Upcoming Events

Meats Judging

Join us on at 4:00 p.m. and Tuesday, September 20th starting at 5:30 p.m. to find out more information on the new meats judging team! 4-H volunteer Nora Whitson will be leading this project and is excited to start this project in Bell County! If you have any questions, feel free to contact Nora Whitson or Sheryl.



Ag Product ID Practices

The practices for the Ag Product ID contest will take place after the Food Challenge practices at the 702 House in Belton. Start time should be around 6:30 p.m. Those practices are scheduled for:

October 7, 12, 19

Contact Michael Canales for more information on this contest.

NEW Bell County 4-H T-Shirt is here!

Emma Nicholson of Stampede Creek 4-H won the t-shirt design contest for this years shirts. Short sleeved t-shirts will be for sale starting Saturday, October 1st at Hunter's Spectacular. After that, you can purchase them at the CEO. Long sleeve shirts and hoodies are available for purchase by orders only. Go to the Bell County 4-H to print off the order form, mail in your form with payment to complete your order. Please have your forms turned into the CEO no later than October 14th.



CoolClips.com

County Council & Ambassadors



mo.29iiD100D

County Council Meeting

WHEN: Tuesday, November 15th **WHERE:** County Extension Office (CEO)

START TIME: 6:30 p.m.

Remember the council delegate and the president of the club are the two representatives from your club who come to the meeting and are voting delegates for the club. All 4-H members are welcome though! It will be a lot of fun, so come and learn about the county 4-H program and vote on exciting new 4-H opportunities.

The community service project will be the collection of items for foster care families.



FCS Project News



Food Challenge Practices

If you are interested in competing in the 4-H Food Challenge Contest, then please attend one of the upcoming Food Challenge Practices! Practices to be held at the First Baptist Church, 702 House in Belton. These practices will be limited to 1 hour! 5:00-6:30 p.m.

- October 7, 12, 19
- November 2, 11, 16, 30
- December 2

Two senior teams and two junior/intermediate teams will advance to the district contest which will be December 7. Four senior teams (one per category) will advance to the state contest that takes place during the Texas 4-H Round Up in June.

~Bell County Food Show/Food Challenge Contest~

The Bell County Food Show and Food Challenge contests will be held on Monday, October 24th at the First Baptist Church of Rogers.

Food Challenge is for all 4-H Grade levels and will compete in teams of 3-5 participants.

NEW THIS YEAR! The District 8 Food Show is now for **ALL** 4-H grade levels. Only seniors will be able to advance to the state level but now Juniors, Intermediates, and Seniors will be able to advance to the district contest.

Entries will be due to the CEO by October 12th. Please check the Bell County 4-H website for county entry forms. Winners of the county contest will advance to the District 8 contest on December 7, 2016 at the Bell County Expo!

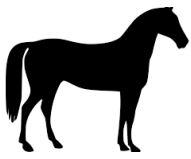
4-H/FCS Coalition Meeting

We will have a short 30 minute 4-H/FCS Coalition meeting on Thursday, October 27th at the CEO starting at 5:30 p.m. The MAB meeting will follow at 6:00 p.m.

4-H Club Managers / Adult Volunteers

Membership Advisory Board Meeting

All MAB officers will need to attend the next Membership Advisory Board Meeting on Thursday, October 27th at the CEO. Meeting will start at 6:00 p.m.



Livestock Project News



~~ Major Show Lamb and Goat Validation ~~

WHEN: October 18 & October 25 at Bell County EXPO!

TIME: 4:00 p.m.—7:00 p.m.

COST: State Validation tags should have already been ordered through the CEO, if you have not purchased a tag and need to, you must contact Sheryl ASAP!

County tags will be \$5 per animal payable at validation

We will contact those who ordered Major Show tags to come by the CEO before October 18th to fill out their state validation paperwork. You will appreciate this come validation night!

~~ Major Show Heifer Validation ~~

WHEN: October 17 at Bell County EXPO!

TIME: 4:00 p.m.—7:00 p.m.

COST: \$12 per head, payment MUST BE submitted at validation

4-H members must come by the CEO **BEFORE** the validation date to fill out paperwork. We must scan and upload **ORIGINAL** heifer registration papers before validation as well. Your heifers must be properly tattooed **BEFORE** arrival as well. Please bring your original registration papers with you to validation! Non-registered heifers, to be shown at Bell County Youth Fair ONLY, will be permitted to county validate for \$5/head. County only tags will be purchased on-site the night of validation.

~~ Spring 2015 Major Show Sign Up ~~

WHEN: November 7 and November 8, 2016 at the CEO

TIME: 4-7 PM

Entry forms for all 2017 Spring Major shows (Fort Worth, San Angelo, San Antonio, Houston, Austin) will be available for pick-up from Sheryl at the extension office beginning in October. We will host open nights at the office for your family to come register for all the majors. **All completed forms and payment must be turned in to Sheryl at the extension office no later than 7:00 PM on November 8, 2016.**

Checks or exact change only will be accepted, NO CREDIT CARDS!

Please know your child's birthdate, social security number and Quality Counts number when attending Major Show Entry night or turning in entry forms. Those items are a necessity!

~Poultry Exhibitors~

San Antonio, Houston & Austin Broilers: Due to CEO by **October 23**, cost \$31.25 per 25 head, must declare which Major Livestock Show the birds are for.



BCYF Roaster: Due to CEO by **November 1**, cost \$44 for 25 birds. Birds will arrive on December 6th.

BCYF Broiler: Due to CEO: **November 22**, cost \$44 for 25 birds. Birds will arrive on December 27th.

~~ Major Show and County Swine Validation ~~

WHEN: November 22nd & 29th at Bell County EXPO!

TIME: 4:00 p.m.—7:00 p.m.

COST: State Validation tags should have already been ordered through the CEO.

County only validated pigs will cost \$5 per head.

We need all parents to be there to sign forms and to draw a map where animals are being kept. If a parent cannot be there, a parental waiver form must be signed before validation.

NOV. 22— ACADEMY FFA, BARTLETT FFA, BELTON FFA, OENAVILLE 4-H, SALADO 4-H/FFA, STAMPEDE CREEK 4-H, TIGERTOWN 4H, TEMPLE FFA, TROY 4-H/FFA

NOV. 29 — KILLEEN CAREER CENTER FFA, 4-HIS GLORY, HOLLAND 4-H/FFA, ROGERS 4-H/FFA, KILLEEN 4H/FFA, MAXDALE 4H, TRIMMIER 4-H, ELLISON FFA, HARKER HEIGHTS FFA, SHOEMAKER FFA, MAXDALE 4-H, HARES AND HOUNDS 4-H

The 24th Annual Holiday Classic

Beef, Lamp, Goat & Swine Clinic and Prospect Show

November 5-6, 2016 @ Bell County Expo Center, Belton, TX

NO ENTRY FEES

Open to all interested youth in 4-H and FFA. Youth must attend Saturday clinics to participate in Sunday showmanship and prospect shows.

The Holiday Classic Clinics and Prospect Shows are intended to provide an educational opportunity for new families (4-H & FFA) participating in the livestock project area. The main purpose is to teach the basic principles of livestock management as they relate to facility maintenance, selection, nutrition, animal health, handling, showmanship, and transportation.

Contact our office for more information.

Important Dates

October 2016

November 2016

October 1: Hunter's Spectacular
October 7: Food Challenge and Ag Product ID
October 9: Meats Judging Practice
October 10: County Holiday, Closed
October 12: Bell County Food Challenge and Food Show Entry Deadline
October 12: Food Challenge and Ag Product ID
October 15: Clover Kid Meeting
October 17: Major Show & BCYF Heifer Validation
October 17: Meats Judging Practice
October 18: Major Show & BCYF Lamb & Goat Validation
October 19: Food Challenge and Ag Product ID
October 23: Major Show Broiler order due to CEO
October 24: Bell County Food Show & Food Challenge Contest, Rogers
October 25: Major Show & BCYF Lamb & Goat Validation
October 27: FCS Coalition Meeting
October 27: MAB Meeting
October 31: LAST Day for \$20 4-H Enrollment

October 2-8: National 4-H Week
October 6-15: Heart O' Texas Fair & Rodeo
October 16—22 National Teen Driver Safety Week

November 1: 4-H Enrollment fee goes up to \$25!
November 5-6: D8 Holiday Classic, EXPO
November 7: Major Show Entry Night, CEO, 4-7
November 8: Major Show Entry Night, CEO, 4-7
November 8: Absolute LAST DAY to turn in Major Show Entries
November 10: Texas 4-H Scholarship Training
November 11: County Holiday, Closed
November 12: One Day 4-H Community Service Project
November 15: County Council Meeting
November 19: Clover Kid Meeting
November 22: Major Show & BCYF Swine Validation
November 24-25: County Holiday, Closed
November 29: Major Show & BCYF Swine Validation



BELL COUNTY 4-H NEWSLETTER

Bell County Extension
1605 N. Main Room 102
Belton, TX 76513
Phone: 254-933-5305
Fax: 254-933-5312

<http://agrillife.org/bell4h/>

<http://bell-co.tamu.edu>

4-H: Sheryl Raley

siraley@ag.tamu.edu



A handwritten signature in black ink that reads "Sheryl Raley".

Educational programs of the Texas A&M AgriLife Extension Service are open to all people without regard to race, color, religion, sex, national origin, age, disability, genetic information or veteran status. The Texas A&M University System, U.S. Department of Agriculture, and the County Commissioners Courts of Texas Cooperating

Everything will be posted on the Bell County 4-H website

<http://agrillife.org/bell4h/>