

Bell County Staff:

Jackie McLaughlin

County Extension
Agent

Family & Consumer
Sciences

Vacant

County Extension Agent
Natural Resources

Sheryl Raley

County Extension Agent
4-H & Youth
Development

Lyle Zoeller

County Extension Agent
Agriculture

Sheryl Austin

Cooperative Extension—
Family & Consumer
Science

Tonya Elliott

4-H Program Assistant

Emma Merlot

BLT Assistant

Congratulations to our District 8 Record Book Participants!!

James Steglich - 1st Place Jr. - Gardening

Luke Read - 2nd, Int. -Goats

Sarah Wood - 3rd, Int. - Health

Elisa Ranley - 3rd, Int. - Poultry

Emma Ranley - 1st, Int. - Rabbit

Emily Dague - 2nd, Int.- Vet Science

Braylee Mackie - 1st, Sr. - Beef

Kristen Heisch-3rd,Sr-Clothing & Textiles

Erin Steglich - 1st, Sr. - Leadership

Clara Steglich - 1st, Sr. - Swine

Ian Ranly - Jr. - Rabbit

Connor Payne - Int. - Shooting Sports

Margaret Wood - Int. - Health

Chase Alexander - Sr. - Food & Nutrition



**4-H is for YOU !
4-H is for FUN !**

The new 4-H Year will start over on August 15th! This means you can start re-enrolling your family on 4-H Connect. Log on to www.4honline.com. If you need help logging in or don't remember your password, contact Sheryl. More details inside this newsletter on enrollment.



1605 N. Main, Room 102

Belton, TX 76513

Phone: (254)933-5305

Fax: (254)933-5312

E-mail: bell@ag.tamu.edu Website: <http://agrilife.org/bell4h/>



4-H Enrollment

4-H Enrollment starts **August 15th!!!** All enrollment is done via 4-H Connect. You can access 4-H Connect by going to our 4-H website at <http://agrilife.org/bell4h/> and clicking on the 4-H Connect icon.

To maintain the level of programming and opportunities in the Texas 4-H and Youth Development Program, an annual participant fee is implemented for each 4-H member (excluding Clover Kids). The participant fee is \$20 if enrolled from **August 15th to October 31st**, November 1st the participant fee will increase to \$25.

Please do not worry if you are still pending at the county level once you have enrolled. The county office will try to keep up as best as we can by approving them at least once a week. As long as you complete your enrollment, you are in the system and good for enrollment and BCYF requirements. Enrollment dues must be paid by an electronic payment.

For instructions on how to enroll, please visit:

<http://agrilife.org/bell4h/4-henrollment-guidelines/4-h-enrollment-information/>

All volunteers who enroll will be charged \$5.00 each volunteer. This covers your screening for the year. All volunteers will have to enroll each year. Club Managers must enroll ASAP!

If you have further questions, please contact the County Extension Office at: 254-933-5305

4-H Age /Grade Requirements

Effective with the new 4-H Year signup, Texas 4-H membership eligibility will be based on SCHOOL GRADE and not age. The eligibility rules and guidelines are:

Youth may participate in 4-H year from September 1st of grade three through August 31st following completion of grade twelve, with these age restrictions:

Minimum age - 8 (as of August 31, 2016 and in the 3rd grade)

Maximum age - 18 (as of August 31, 2016)

4-H Member Categories

Juniors: Grades 3, 4, and 5

Intermediates: Grades 6, 7, and 8

Seniors: Grades 9, 10, 11, and 12

| EVENT | REGISTRATION DUE DATE | EVENT DATE | LOCATION |
|---|--|--------------------------|--|
| Texas 4-H Recordbook Judging | Sheryl will enter members that advance from District | Monday, August 1, 2016** | |
| Vet Science Camp | | Aug 1—3, 2016 | Bell County Expo |
| Chef Day Camp | RSVP by August 2nd to CEO | Thursday, August 4, 2016 | Temple Texas Roadhouse |
| 16-17 4-H Enrollment BEGINS | | August 15, 2016 | www.4honline.com |
| Bell County 4-H Awards Banquet | | Tuesday, August 16, 2016 | Bell County Expo Center, Special Events Room |
| <i>**Tentative Dates and/or Locations</i> | | | |

Hunter Spectacular

We need your help! Each year, the Bell County 4-H hosts fundraisers to help with the costs of supporting our youth.

Our event is called the Hunter's Spectacular and will be held **October 1, 2016** at the Bell County Expo Center. We will have lots of fun things for the whole family at the event including a meal, silent auction, vendors, and even have games. We will also have a drawing for 20 guns, binoculars, hunting equipment, t-shirts for sale and lots of other fun prizes. For the young people, we have games and activities and even a cake walk. A live auction of outdoor items will take place as well as a silent auction with the hunter in mind.

We need our 4-H members to sell tickets to the event. Your club manager will be asking each of you to participate and we want you to know that we utilize the funds raised for the total Bell County 4-H program....which includes you! We are able to help offset the costs of many events, camps, livestock supplies, workshops, contests, and leadership activities through these funds. If you have questions, please do not hesitate to call the Extension Office and visit with Sheryl about the event. All your tickets should be turned in to your club manager between September 21st - 25th. **Club managers will have to turn in tickets on September 28-30. (Tickets are available through your club manager starting August 1st)**

If you are interested in helping, please contact Sheryl Raley at siraley@ag.tamu.edu

Hunter Spectacular Meeting

If you are a Committee Chair person or on a committee for the Hunter Spectacular, please join us for an update meeting on Thursday, August 25th following the MAB meeting. Please be prepared to tell everyone the status of committee's progress and responsibilities.

Upcoming Events

Vet Science Camp

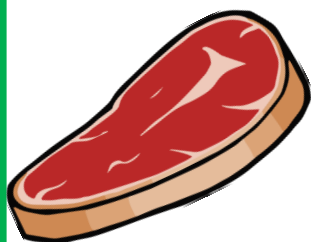
August 1—3, 2016—Bell County Expo!



Have you ever wondered what it would be like to be a veterinarian and help animals every day?

This exciting camp is open to all youth who are in grades 3rd through 12th, (ages 8-18). Participants will explore what it takes to get to vet school, learn about the 4-H veterinary science project, get to see live veterinary procedures, hands on sessions, and meet local veterinarians and vet technicians.

For more information please contact Stacey Winters or the Bell County Extension Office at 254-933-5305



Meats Judging

Interested in the Meats Judging project? Then join us on Tuesday, August 9th to find out more information! 4-H volunteer Nora Whitson will be leading this project and is excited to start this project in Bell County! If you have any questions, feel free to contact Sheryl.

4-H Awards and Recognition Banquet

The 4-H Awards Banquet has been set for August 16, 2016, 6:30 - 9:00 p.m. This event will take place at the Bell County Expo! The theme is "Sweet on 4-H". The attire will be Sunday dress. RSVP deadline is Friday, August 5th. Contact our office with any questions.



4-H Awards Banquet Set Up

ALL County Council Officers and Ambassadors are REQUIRED to help with set up starting at 9 a.m. at the Expo. You will have time to go home and change prior to banquet.

4-H Open House

4-H Open House will be held September 7th from 5:30-8pm at the Bell County Expo Assembly Hall. Do you need more project experience for your recordbook or project form? Do you want to gain more members for your club? Here is your opportunity!!!! If you would like to be in charge of a project or club booth at the Open House, please fill out the Doodle think that will soon be sent out and let us know which project you would like to demonstrate or which club you plan to have a booth. Hands on activities are encouraged at each project booth! Project booths are first come first serve. **Booths are to be reserved by August 26th!!** (Those participating in project demonstrations and club booths need to be at the Expo Center by 5:00 p.m. to set up and be ready by 5:30pm) **A committee meeting will be held August 25th at 6:00 p.m. (before the MAB meeting) at the CEO to plan for Open House.**

Upcoming Events



Chef Day Camp

CHANGES have been made!!

We will be hosting a Chef Day Camp on Thursday, August 4th. This event will take place at the Temple Texas Roadhouse. Cost of this day camp is \$6 per person. Participants must wear closed toed and non-slip shoes! Payment must be turned in in order to RSVP for this event. **Topics:** Meat cutting and cooking demonstration, salad by Texas Roadhouse diagrams, croutons made the Texas Roadhouse way and then we get to sample!

RSVP deadline is August 2nd at the County Extension Office.

Participants will meet at Texas Roadhouse by 9:45 a.m. on the 4th.

Bell County Youth Fair

Below are the new changes regarding BCYF. Please make sure you have a sign in sheet at each meeting and announce to all members to sign in before, during, and after the meeting.

- The BCYF has a website in which everything will be posted including the new fair book, entry forms, superintendent's names and phone numbers, score sheets, and other information: <http://agrilife.org/bellctyyouthfair/>
- You **MUST** attend 2 meetings to participate in the BCYF. You MUST sign in on the sign in sheets for it to count.
- 2 meetings will be allowed from **August 1, 2016 to December 31, 2016** this year. No meetings will be allowed in January to use for the 2 meeting rule.
- All 4-H members **MUST** be enrolled by **December 1, 2016** to participate in the BCYF. However, the fee will go up after October 31st so do it quickly.

BCYF Commercial Steer Weigh- In

For those who plan on showing Commercial Steers at the Bell County Youth Fair, the weigh-in will be held on Saturday, September 10th. This will take place at the W.C. Evans Ranch in Little River-Academy. For questions, contact the CEO.

FCS Coalition Meeting

Date: Thursday, August 11, 2016

Location: County Extension Office

Time: 6:00 p.m.—7:00 p.m.



County Council & Ambassadors



County Council Officer Training

Wednesday, August 10th

9:00 a.m.—3:00 p.m.

We will provide lunch for the participants

It is MANDATORY for all County Council Officers to attend!

If you have scheduling conflicts, please let Sheryl know!

4-H Club Managers / Adult Volunteers

MAB Finance Committee Meeting

If you are interested in serving on the Membership Advisory Board Finance Committee, then please come to the CEO on Thursday, August 18th. We will be reviewing the finances starting at 6:00 p.m. We strongly encourage a representative from each club attend this meeting! This will determine how the funds raised will be distributed for the 2016-2017 4-H year.

Membership Advisory Board Meeting

When: August 25th

Where: CEO Board Room

Time: 6:30 pm

All Club Managers and Assistant Club Managers are required to attend. This meeting will not only elect new officers, but we will have a training for those that attend. All parents and leaders are also invited to attend.

Each club is allowed a maximum of 3 votes.

We will hopefully have the 2016-2017 charter packets available from the state office to give to each club. Let Sheryl know if you have a schedule conflict or any questions.

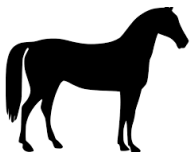
~Hunter's Spectacular~

Pick Up Tickets (**club managers only**): August 1, 2016

All your tickets should be turned in to your club manager September 21 – 25. **Club managers will have to turn in tickets on September 28-30. (Tickets are available through your club manager starting August 1st) 8—11 a.m. then 1-4 p.m. NEW THIS YEAR ~ Club managers will deposit all money sold by their members into their club account. Managers will then write a check to Bell 4-H for your total amount of tickets sold.**

The Bell County 4-H fundraiser will take place Saturday, October 1, 2016 at the Bell County Expo Center! If you are interested in serving on a committee, please let Sheryl know.

Early ticket turn-ins are always welcome! Please adhere to the turn-in instructions that were given to you with your tickets. Please call the CEO to set up your appointment for ticket turn-in.



Livestock Project News



Fall 2016 Major Show Entry Deadlines!

West Texas Fair and Rodeo: Due to CEO by Monday, August 8, 2016

State Fair Of Texas: Due to CEO by Monday, August 8, 2016

Heart O' Texas Fair and Rodeo: Due to the CEO by Friday, September 2, 2016

Entry forms for the above shows are available at the CEO. Please come by, fill out, and turn in the appropriate paperwork as well as payment for all entry fees. Be sure to pay attention to the date for each show and when those forms are due to the CEO. **MUST HAVE EXACT CHANGE OR MAKE CHECKS PAYABLE TO BELL COUNTY 4-H!** If you have any further questions please contact Sheryl at siraley@ag.tamu.edu or call 254-933-5305.

~~ Major Show Lamb and Goat Validation Tag Orders ~~

WHEN: August 19, 2016

WHERE: CEO

COST: \$12/Tag for Market Tags

\$12 for Wether Does Tags & \$12 for Wether Dam Tags

\$10/head for Registered Breeding Sheep and Goats

For those members who plan to validate lambs or goats for the 2017 spring major shows (Fort Worth, San Angelo, San Antonio, Houston, Austin) you **MUST ORDER AND PAY FOR YOUR TAGS at the CEO NO LATER THAN 5:00 P.M. ON AUGUST 19TH!** Cost will be \$12/tag for market tags and wether doe/dam tags. All breeding sheep and goats must be validated as well. The Texas 4-H and FFA Breeding Boer Goat Validation program includes registered boer **BUCKS and DOES**, as well as wether does. The Texas 4-H and FFA Breeding Sheep Validation program includes registered boer **BUCKS and EWES**, as well as wether dams. Breeding wether does and breeding wether DAMS will require a wether doe/dam tag so make sure you specify what tag you are ordering. Registered breeding sheep and registered breeding goats will cost \$10 per head to validate. The Texas 4-H and FFA Breeding sheep validation program will include all wether dams as well. **MUST HAVE EXACT CHANGE OR MAKE CHECKS PAYABLE TO BELL COUNTY 4-H!** If you have any further questions please contact Sheryl at siraley@ag.tamu.edu or 254-933-5305.

~Poultry Exhibitors~

San Antonio, Houston & Austin Broilers: Due to CEO by October 23, cost \$31.25 per 25 head, must declare which Major Livestock Show the birds are for.

BCYF Roaster: Due to CEO by November 1, cost \$44 for 25 birds. Birds will arrive on December 6th.

BCYF Broiler: Due to CEO: November 22, cost \$44 for 25 birds. Birds will arrive on December 27th.

Important Dates

August 2016

September 2016

**August 1: Hunter's Spectacular Ticket Pick-Up
(CLUB MANAGERS ONLY)**

August 1: State Recordbook Judging

August 1-3: Vet Science Camp, EXPO!

August 4: Chef Day Camp, Temple Texas Roadhouse

August 8: West Texas Fair & Rodeo entries due

August 8: State Fair of Texas entries due

August 9: Meats Judging Interest Meeting

August 10: County Council Officer Training

August 11: FCS Coalition Meeting

August 15: 2016-2017 4-H Enrollment begins!

August 16: 4-H Awards and Recognition Banquet

August 18: MAB Finance Meeting

**August 19: Major Show Lamb and Goat Validation
Tag Order DEADLINE**

August 25: MAB Meeting

August 25: Hunter's Spectacular meeting (after MAB)

September 2: HOT Fair Entry Deadline

September 3: Central Texas State Fair

September 5: Labor Day, CEO will be closed

September 7: 4-H Open House, EXPO!

September 10: BCYF Commercial Steer Weigh-In

**September 21-25: HS tickets to be turned into Club
Manager**

September 28-30: Club Managers turn in H.S. Ticket



BELL COUNTY 4-H NEWSLETTER

Bell County Extension
1605 N. Main Room 102
Belton, TX 76513
Phone: 254-933-5305
Fax: 254-933-5312

<http://agrillife.org/bell4h/>

<http://bell-co.tamu.edu>

4-H: Sheryl Raley

siraley@ag.tamu.edu



A handwritten signature in black ink that reads "Sheryl Raley".

Educational programs of the Texas A&M AgriLife Extension Service are open to all people without regard to race, color, religion, sex, national origin, age, disability, genetic information or veteran status. The Texas A&M University System, U.S. Department of Agriculture, and the County Commissioners Courts of Texas Cooperating

Everything will be posted on the Bell County 4-H website

<http://agrillife.org/bell4h/>