

Dorper vs. Rambouillet in West Texas

D.G. Riley, J. W. Thorne, R.R. Redden,
A.D. Herring, and D.F. Waldron

TEXAS A&M
AGRILIFE
RESEARCH

Rambouillet

- ⦿ Finewool breed that was developed from the Spanish Merino in France
- ⦿ Foundation breed for many western range flocks
- ⦿ Also known as a dual-purpose breed for its finewool and carcass characteristics



Dorper

- ⦿ Breed was developed in the 1940's and originated in South Africa
- ⦿ Popularity gaining in the United States
- ⦿ No shearing



Initial Flock

- ◉ Dorper from 20 flocks from 10 states
Oregon, South Dakota, Minnesota, Iowa, Missouri,
Ohio, Kentucky, Oklahoma, Arizona, Texas
- ◉ Rambouillet from 13 Texas flocks
- ◉ Ewes born from 2003-2005
- ◉ Approximately 100 ewes/breed

Lamb Production (1091 matings)

	Dorper	Rambouillet	P
Fertility	88%	85%	.3
Lambs born/ewe lambing	1.58	1.38	<.01
Number of lambs weaned	1.15	1.05	.13

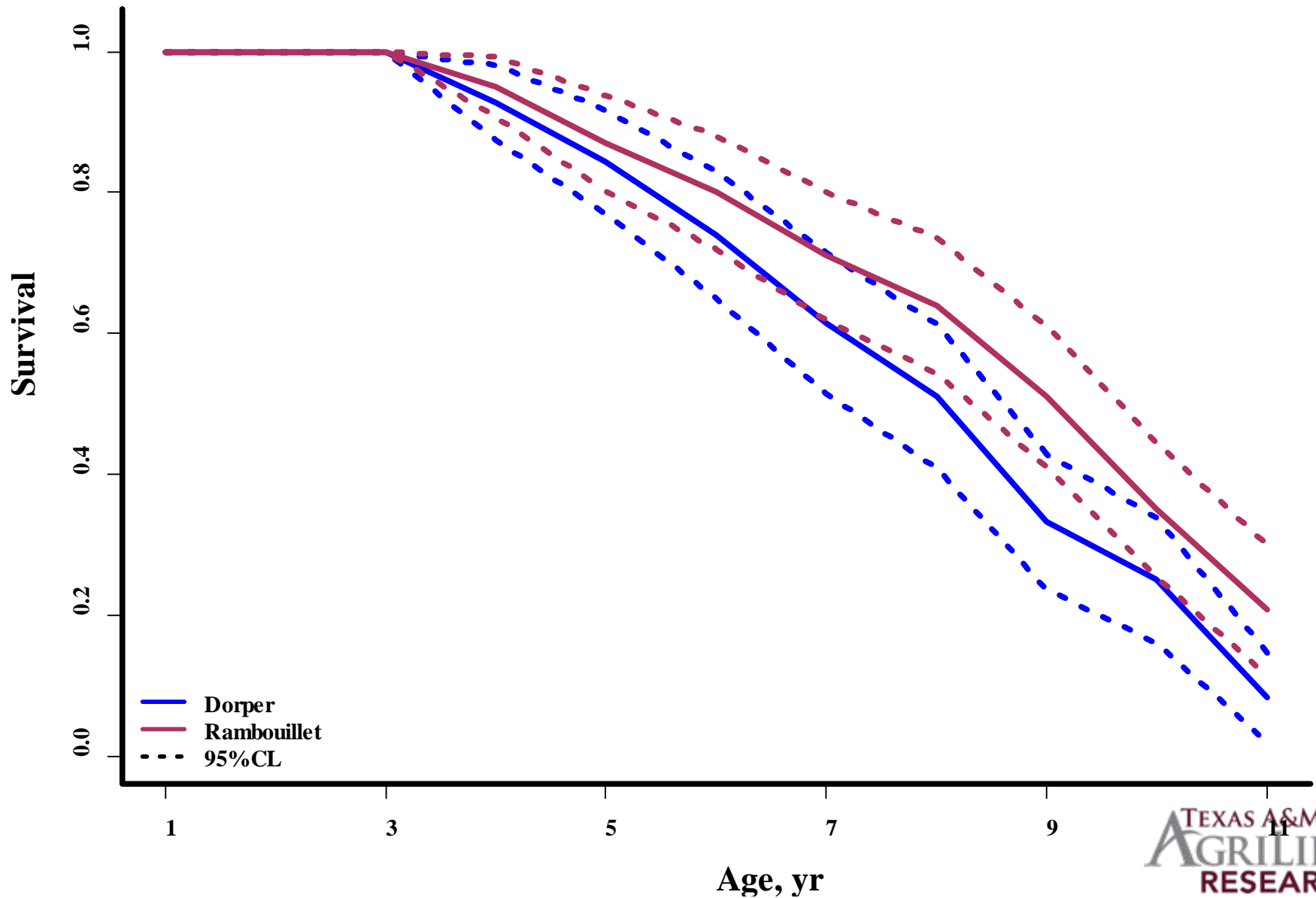
Weight and Condition of ewes

	Dorper	Rambouillet	P
Weight at Breeding, lb	147	154	.05
Body Condition Score	3.0	2.7	<.01

Lamb Production

Weaning Weight (lb)	Dorper	Rambouillet	P
Single	67	67	
Twin	56	53	<.01
Triplet	47	51	

Ewe Stayability



Carcass Traits

	Dorper	Rambouillet	P
Dressing %	49	47	<.01
USDA Yield Grade	2.9	2.5	<.01
Fat thickness, in	.32	.26	<.01
Bodywall, in	.91	.80	<.01
LMA, Sq. in	2.8	2.6	<.01
Carcass length, in	40.6	41.7	<.01

Resistance/Susceptibility to Parasites

Collection Date	N	Fecal Egg Count, epg		P
		Dorper	Rambouillet	
April, 2006	135	737	789	.78
August, 2006	134	56	45	.42
December, 2006	137	280	378	.07
April, 2007	170	533	943	<.01
August, 2007	169	135	456	<.01

Feed Conversion Efficiency postweaning (70 days)

Ram lambs	Dorper	Rambouillet
2009 Trial	6.80	6.80
2010 Trial	5.81	5.88

* feed/gain

Wrap up

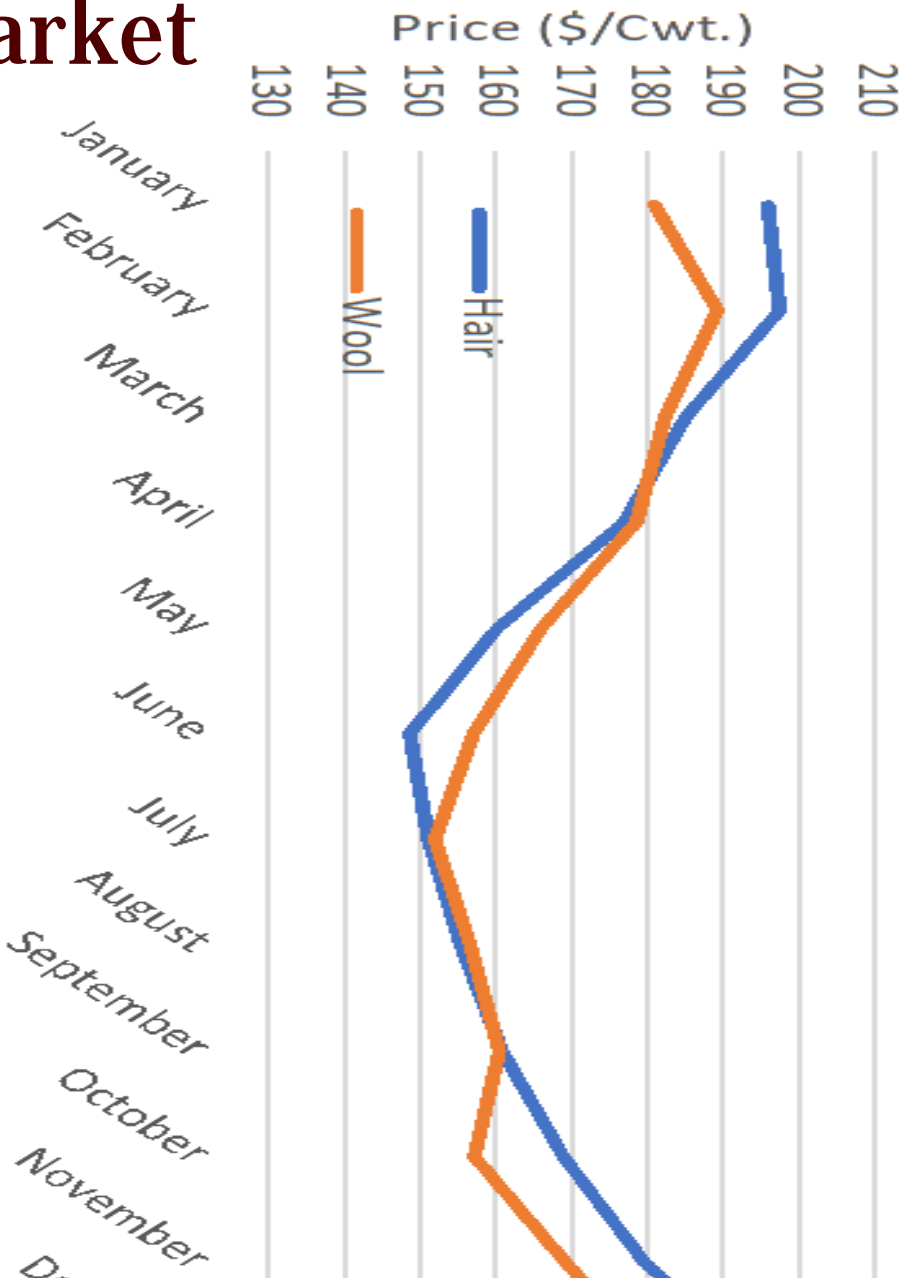
	<u>Dorper</u>	<u>Rambouillet</u>
Body condition	+	
Parasite load	+	
Number of lambs born/ewe	+	
Lamb weights/growth rate	+	+
Feed Conversion	+	+
Dressing Percent	+	
Carcass Yield/Value		+
Ewe Stayability		+
Lamb Survival	+	+
Wool/Pelt Value		+

Sponsors

- ⦿ National Sheep Industry Improvement Center
- ⦿ American Sheep & Goat Center
- ⦿ Half-Circle Six - Philip Glass
- ⦿ VIP Livestock
- ⦿ Our Father's Place
- ⦿ Keith Kugler
- ⦿ Broadmead Farm
- ⦿ Riverwood Farm
- ⦿ Yucca Lily – Mike Sudderth

Lamb Market

Figure 2. San Angelo Lamb Prices by Type and Month; 2010-2018



Wool Market

20 MICRON MARKET INDICATOR

