

A survey on rodents and their control in ranches

Please help us!

Anonymous

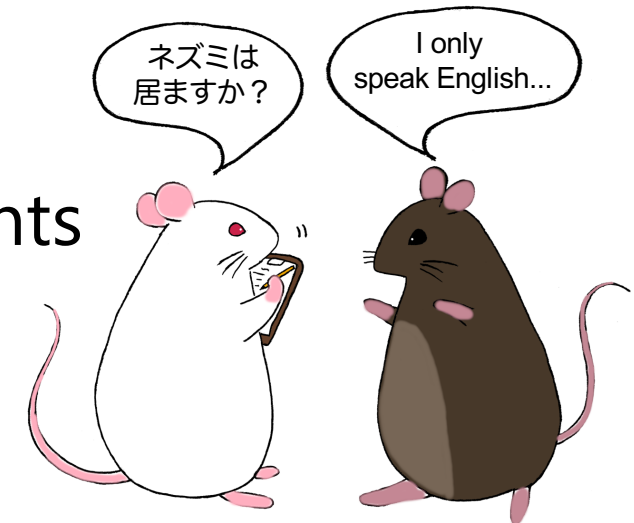
Approximately 10 min

Your response will enable us to...

- identify risk factors for rat infestation
- develop more effective methods to control rodents



https://bit.ly/survey_rodents



This is a collaborative research being conducted by
The University of Tokyo, NARO, Japan Pest Control Association (Japan),
Fordham University, and Cornell University (USA).



Contact: Michael Parsons (parsons.hmichael@gmail.com), Visiting Research Scholar, Fordham University, USA
Yasushi Kiyokawa (akiyo@mail.ecc.u-tokyo.ac.jp), Associate Professor, The University of Tokyo, Japan