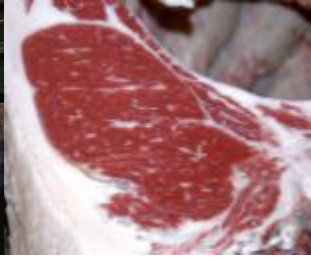


Brush Country Beef 706

Series of Three Field Trips/Workshops



The Texas Beef Council and Texas A&M AgriLife Extension have teamed up to present the Brush Country Beef 706 program. This three-part series of hands-on sessions, focusing on beef quality management and marketing opportunities, is available for all beef cattle producers. This checkoff-funded program is designed to help producers maximize profits and have a better understanding of the production process after their cattle enter the feedyard.

Session one will be held Thursday, September 15, 2022 at 6:00 pm at the Live Oak Livestock Market Auction, 3795 U.S. 281, Three Rivers, TX (4 miles south of Three Rivers, TX on Hwy 281 or 6 miles north of George West on Hwy 281, located on the west side of Hwy 281) beginning at 6:00pm with dinner. Speakers will discuss factors affecting feeder calves and the value they receive at auction based on their expected performance in the feedyard. Producers will then choose and bid on a calf for the feedyard and processing sectors.

Session two will be held Saturday, February 4, 2023 at 9:00 am at Texana Feeders Ltd. 3493 FM 539 Floresville, TX. During this session, producers will get to review their cattle as nearly-finished market steers and learn about factors that impacted feedyard performance and impact finished steer value. The program will start with a feedyard tour at 9:00 am.

Session three will be held May 2-3, 2023 9:00 am at Texas A&M University Rosenthal Meat Science Center beginning at 9:00am on Day 1 and 7:30am on Day 2 and ending at 1:00pm. This 1.5-day session will allow producers to participate in a hands-on exercise that takes their chosen feeder calves from session 1, now finished steers, through the harvest, grading and fabrication process.

There will not be a cost to attend the workshop but individuals must participate in the complete series.

Questions

Dale Rankin
Atascosa County
830-569-0034

Warren Kopplin
Live Oak County
361-449-1703

Atascosa County
Live Oak County
Wilson County
Karnes County
Bee County
McMullen County
Bexar County
San Patricio

TEXAS A&M
AGRI LIFE
EXTENSION

To Register call
Live Oak County
361-449-1703

