



# CLOVER CHRONICLE



## JULY/AUGUST 2017 IN THIS ISSUE

### WHARTON COUNTY

- County Council Corner
- 4-H Enrollment
- Recordbook Placings
- Summer Participants
- Annual Awards Banquet
- Club Chartering
- Take Pictures!
- 2017-2018 Major Shows
- Birthdays

### DISTRICT II EVENTS

- D11 Recordbook Results
- D11 Junior Leadership Lab

### STATE EVENTS

- State Photography Results
- State Roundup Results

### CALENDAR

- 4-H Happenings
- D11 Calendar

## Congratulations to all of our 2017 Graduating Seniors and to all who participated in the Texas 4-H Roundup!

Congratulations to our 2017 4-H high school graduates: **Bo Berry, Brent Vacek, Cameron Guthman, Grant Kolacny, Jenna Janke, Kelly Salyer, Kryste Vitera, Kyle Kolacny, Kyler Valenta, Lannah Korenek, MacKenzie Harfst, Melea Socha, Michelle Sutton, Monica Reyna, Paiton Kalina, Regan McGill, Reid Zboril, Richard Lormand, Ryon Korenek, Savannah Cessna and Zane Baker.** I am very proud of the kind, responsible, talented, outgoing young men and women you have become. Use the skills you have gained from your 4-H leaders and friends to help you in this next exciting phase of your life!

Summer 2017 is officially coming to an end. As we get ready to head back to school, we are also preparing for an exciting new 4-H year starting in September. This summer was full of lots of exciting events and I could not be more proud of all the hard work the Wharton County 4-Hers have put into their projects. Summertime activities included the Texas 4-H Roundup, Texas 4-H State Photography Contest, D11 Horse Show, D11 Leadership Lab, D11 Junior Leadership Lab, Recordbook Judging and tons of summer youth camps.

I am excited to start the new year and look forward to working with you to help make the most out of your 4-H experience. Don't be afraid to try something new. I know we can find a great project for you! Feel free to come by the office if you are interested in serving as a volunteer to the Wharton County 4-H Program or would like to learn about more great 4-H activities.

Kindest regards,

Wharton County Extension Agent  
4-H Youth and Development

## STAY CONNECTED

**WEBSITE:** [agrilife.org/wharton4h](http://agrilife.org/wharton4h)

**INSTAGRAM:** [wharton4h](https://www.instagram.com/wharton4h)

**REMIND:** text @wharton4h  
to 81010 or 469-530-2399





## **COUNTY COUNCIL MEETING**

County Council meetings are held the

**4th Monday of the month at 6:30 p.m.**

at the Extension Office, unless stated otherwise. All members are welcome and encouraged to attend.

## **2017-2018 COUNTY COUNCIL OFFICERS**

PRESIDENT: Reed McGuill

1ST VICE PRESIDENT: JR Schauer

2ND VICE PRESIDENT: Hannah Chumchal

3RD VICE PRESIDENT: Amber Orsak

SECRETARY: Zoey Zahn

TREASURER: Lana Foyt

REPORTER: Taylor Watz

PARLIAMENTARIAN: Marshall Mahalitic

HEALTH AND SAFETY OFFICER: Ralston Chumchal

D11 COUNCIL DELEGATE: Reed McGuill



## **2017-2018 4-H ENROLLMENT**

Each year on August 15th all membership in Texas 4-H goes to inactive and all youth members a adult volunteers must re-enroll. A youth that is 8 years old and going into the 3rd grade must wait until September 1st to enroll for proper fees to be accessed in the system.

Youth members are required to pay a \$20.00 participation fee if enrolled by October 31st, and a \$25.00 fee from November 1st to the completion of the 4-H year. Adults pay a \$5.00 volunteer applicant fee.

REMINDER: Payment is submitted through a credit card. Please do not indicate the county will pay. If this option is selected, families will have their enrollment returned for correction. This means that members are not considered official until the office accepts your enrollment.

Adults and youth will need to enroll on 4HConnect and be active to be considered an official member of Texas 4-H. An active enrollment is required in order to register and participate in all 4-H activities and events.

## **SCHOOL ELIGIBILITY**

Wharton County AgriLife Extension complies with the law set forth by legislature regarding eligibility and school absences. Members must have an ACTIVE profile in 4-H CONNECT to be eligible to participate in 4-H events. Members competing or simply participating in a 4-H event (Food Show, Fashion Show, Livestock Show, etc.) must be certified as eligible to participate by their respective schools. School officials will be provided with a list of students entered in competitive and/or non-competitive 4-H events. Should a student be ineligible due to their respective School District's Policy (grades, absenteeism, discipline, etc.), school officials will be notified in writing of their ineligibility status by our office.

### **AMERICAN WITH DISABILITIES ACT OF 1990**

Individuals with disabilities who require an auxiliary aid, service, or accommodation in order to participate in any 4-H event are encourage to contact their County Extension Agent at 979-532-3310 at least one week in advance of the program in order for proper arrangements to be made.

The information given herein is for educational purposes only. Reference to commercial products or trade names is made with the understanding that no discrimination is intended and no endorsement by Texas A&M AgriLife Extension is implied.



# INSTRUCTIONS



1. Access the 4-H CONNECT on-line system at: <https://texas.4honline.com/>
2. **New Members:** Select [I need to set up a profile].  
**Returning Members:** Select [I have a profile] or [I forgot my password].  
*Contact County Extension Office for resetting assistance.*
3. **New Members:** Select Adult or Youth from the drop down menu and click [Add Member].  
**Returning Members:** Click [Edit] to the right of the inactive member's profile.
4. Once all profile information is current and correct under the Personal Information, Additional Information, Health Form, and Participation areas of enrollment continue to the Invoice page.
5. Review your invoice to ensure that the participation fee has been charged and it is correct. If you have been awarded an award certificate or a scholarship to cover your participation fee, enter the award code in the award code box. Once information has been reviewed, click continue to the Payment screen.
6. **New Members:** If you are new to 4-H, you can add your credit card payment information to 4-H CONNECT and it will be securely stored. Click the orange [Add New Credit Card] link if paying with credit card or select the county club check option.  
**Returning Members:** If the credit card on file has been updated you will need to remove it and add the credit card again using the new information.
7. Select the appropriate method of payment by clicking on the correct button, then click [Select Payment Method.]
8. On the "Confirm page" each person will be required to click the [Pay By Computer Terms and Conditions]. Click [Submit Enrollment]
9. Once an enrollment (new member) or re-enrollment (returning member) has been submitted, it is sent to the county office for review and approval. Once approved and paid for, an email confirmation will be sent to the family email address. Payment by 4-H Check can take up to 2 weeks to process. An active membership status **WILL NOT** be granted until participation fees have been received and marked as paid.

4HConnect Instruction pages can be found online at <http://texas4-h.tamu.edu/4-h-connect-resources/>

## NEW MEMBERS

- Set up **only one (1) FAMILY profile household** on 4-H CONNECT.
- Write down and place in a secure location the email address and password for the account. Contact the local County Extension Office for assistance in resetting the account.
- Add individual youth and adult profiles (members) in your family profile. Adult/Youth and family profiles must be entered for an enrollment to be reviewed and accepted.

## RETURNING MEMBERS

- **DO NOT** establish another family or member profile on 4-H CONNECT if you already have one in the system.
  - Contact the local County Extension Office for assistance with the email or password if forgotten.
  - When you access your profile to re-enroll **REVIEW YOUR PROFILE VERY CAREFULLY**. Incorrect information can create problems for you, your family, and the Extension Office when trying to communicate, accessing appropriate fees, acquiring school absences, etc.







# 4-H CONNECT NEW MEMBERS



## YOUTH ENROLLMENT INSTRUCTIONS



### ENROLLMENT INSTRUCTIONS

1. Bookmark <http://texas.4honline.com>.
2. Create family profile by selecting the [I need to setup a profile] radial button. Enter the basic information for the family.

3. Click the [Create Login] button.
4. Complete all the requested family information.
5. Click the [Continue] button.
6. Click to add a youth profile from the drop-down menu.

Member List

7. Enter all information on the Personal Information, Additional Information, Health Form, and Participation screens. Incorrect information will affect the fees associated with enrollment and registration.
8. Click the [Continue] button to the invoice information screen. Review your invoice to ensure that the appropriate fee has been charged.
9. Click the [Continue] button to the payment screen.
10. Enter a credit card

- **Credit Card:** Click the orange [Add New Credit Card] link. Complete all the requested information.

11. Click the [Select Payment Method] button to the confirm page.
12. Read and click the [Pay By Computer Terms and Conditions] check-box to agree.
13. Click the [Submit Enrollment] button.
14. The pending enrollment will then be sent forward for processing.

### PROCESSING

The County Extension Office receives an enrollment notice, reviews information and then approves.

#### Enrollment Credit Card Payment Processing

- Once accepted at the county level, the profile will become ACTIVE.

#### Enrollment 4-H Check Processing

- The County Extension Office will create an transfer invoice, secure a check, and mail both to the Texas 4-H Foundation. The invoice and check will be processed and credited against the member profile. The profile will become ACTIVE. This process can take up to two weeks.

Most questions can be answered by calling the Fannin County Extension Office at (903)583-7453



# 4-H CONNECT RETURNING MEMBERS



## YOUTH RE-ENROLLMENT INSTRUCTIONS



### STEP ONE: LOGIN TO FAMILY

1. Bookmark <http://texas.4honline.com>.
2. Select [I have a profile] radial button. or [I forgot my password]. Contact the local County office for password assistance. ([counties.agrilife.org](http://counties.agrilife.org))
3. Enter the email address and password.
4. Click the [Login] button.

5. Click the [Continue to Family] button.

6. Scroll down to the Member/Volunteer List.
7. Click on the [Edit] button on the right side of the inactive youth's profile listing.

| Member/Volunteer List |                     |       |               |                   |                  |      |
|-----------------------|---------------------|-------|---------------|-------------------|------------------|------|
|                       | Name                | Role  | Membership ID | Enrollment Status | Last Active Year | Edit |
| 1)                    | Test Adult 4-H Test | Adult |               | Inactive          |                  |      |

8. Scroll to the bottom of the Profile Information screen and click the [Enroll for 20XX-20XX] button.
9. Review and update all information on the Personal Information, Additional Information, Health Form and Participation screens. Incorrect information will affect the ability to register for an event, and/or fees associated with enrollment and registration.
10. Click the [Continue] button to the invoice information screen. Review your invoice to ensure that fees have been charged correctly.
11. Click the [Continue] button to the payment screen.
12. Click [Add New Credit Card] or select the [County/Club 4H Check] radial button. Contact the local Extension Office to see if the what payment methods are available in your county. (<http://counties.agrilife.org>)

- **Credit Card:** Click radial button beside the credit card to use or Click the orange [Add New Credit Card] button.

Complete all the requested information and click the [Save] button.

The billing address must match EXACTLY to the address on file with the credit card company. Click the [Change Billing Address] button to make a change.

[Change Billing Address](#)

- **Club/County 4-H Check**

Click the [County/Club 4-H Check] radial button.

13. Click the [Select Payment Method] button to the confirm payment.

[Select Payment Method >>](#)

14. Click the [Pay By Computer Terms and Conditions] link and select the checkbox to agree. (if you are using a credit card)
15. Click the [Submit Enrollment] button.

The pending enrollment will then be sent forward for processing.

### STEP THREE: PROCESSING

Youth Submits Enrollment

County Reviews and Approves Enrollment  
(Or sends back for corrections)

Credit Card

4H County/Club Check

Credit Card Charged

County Creates Transfer

Active Profile

County Cuts Check

County Mails Check

State Office Receives Check

Active Profile

Most questions can be answered by calling your county extension office. (<http://counties.agrilife.org/>)



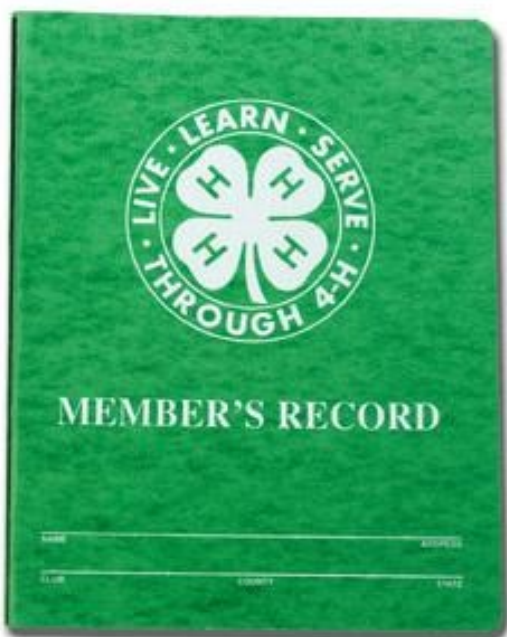
# WHARTON COUNTY 4-H RECORDBOOKS RESULTS JUNIOR DIVISION



| JUNIOR DIVISION   |                                 | COUNTY |
|-------------------|---------------------------------|--------|
| Myla Mahalitic    | Beef                            | 1      |
| Audrey Hudgins    | Citizenship & Civic Education   | 1      |
| Zachary Fuechec   | Citizenship & Civic Education   | 2      |
| Kasey Burns       | Clothing & Textiles             | 1      |
| Isabella Dujka    | Communication & Expressive Arts | 1      |
| Jade Romero       | Food & Nutrition                | 1      |
| Mayleigh Martinez | Food & Nutrition                | 1      |
| Emily Glaze       | Goat                            | 1      |
| Madelyn Glaze     | Goat                            | 2      |
| London Cavness    | Personal Development            | 1      |
| Riley Wallis      | Rabbit                          | 1      |
| Anne Sellers      | Rabbit                          | 2      |



# WHARTON COUNTY 4-H RECORDBOOKS RESULTS INTERMEDIATE DIVISION



| INTERMEDIATE DIVISION |                               | COUNTY |
|-----------------------|-------------------------------|--------|
| Taylor Watz           | Beef                          | 1      |
| Ralston Chumchal      | Beef                          | 2      |
| Breanna Boettcher     | Beef                          | 3      |
| Cleo Boettcher        | Citizenship & Civic Education | 1      |
| Lana Foyt             | Food & Nutrition              | 1      |
| Kellen Dorotik        | Food & Nutrition              | 2      |
| Treylyn Hancock       | Horse                         | 1      |
| Julianne Sellers      | Rabbit                        | 1      |
| Davis Coldeway        | Shooting Sports               | 1      |
| Jace Talas            | Shooting Sports               | 2      |
| Leslie Zahn           | Swine                         | 1      |
| Emma Logan            | Swine                         | 2      |
| Lorelei Cessna        | Swine                         | 3      |
| Allison Bena          | Veterinary Science            | 1      |





# WHARTON COUNTY 4-H RECORDBOOKS RESULTS SENIOR DIVISION



| SENIOR DIVISION   |                               | COUNTY |
|-------------------|-------------------------------|--------|
| JR Schauer        | Beef                          | 1      |
| Hannah Chumchal   | Beef                          | 2      |
| Caitlyn Fuechec   | Citizenship & Civic Education | 1      |
| Zoey Zahn         | Clothing & Textiles           | 1      |
| Abbey Sellery     | Food & Nutrition              | 1      |
| Paige Romero      | Food & Nutrition              | 2      |
| Amber Orsak       | Poultry                       | 1      |
| Shelby AuBuchon   | Rabbit                        | 1      |
| Marshall Mahalitc | Swine                         | 1      |
| Reed McGuill      | Swine                         | 2      |





# Congratulations!

**to all 4-H'ers who participated in 4-H summer events!!!**

**TEXAS 4-H ROUNDUP**

Leaders 4 Life: Michelle Sutton, Regan McGill, Hannah Chumchal, Michael Rome, Chelsey Ott, Byrar Blair

Food Challenge: Abbey Sellers, Hannah Chumchal, Paige Romero

Livestock Judging: Sydnie Lackey, Hannah Chumchal, Paige Romero, JR Schauer

Ag Product ID: Marshall Mahalitic

Health Educational Presentation: Reed McGill

Entomology ID: Regan McGill, JR Schauer

Fashion Storyboard—Jewelry: Amber Orsak

Duds to Dazzle: Zoey Zahn, Elyssa Smith, Jillian Owens, Chelsey Ott

Food Show—Grains: Ryan Williamson

Fashion Show Construction: Zoey Zahn

**TEXAS 4-H STATE PHOTOGRAPHY**

Tyler Williamson  
Ryan Williamson  
Hannah Chumchal  
Blair Watz  
Zoey Zahn

**TEXAS 4-H SHOOTING SPORTS STATE GAMES**

Ralston Chumchal  
Dylan Johnston  
Jace Talas

**D11 HORSE SHOW**

Lauren Drabek  
Treylyn Hancock  
Kiley Sanchez

**D11 LEADERSHIP LAB**

Bryar Blair  
Ralston Chumchal  
Reed MdGuill  
Michael Rome  
JR Schauer

**D11 JUNIOR LEADERSHIP LAB**

Lane Berry  
Rye Berry  
Kasey Burns  
Emily Glaze  
Madelyn Glaze  
Regan Skow  
Riley Wallis



**AUG 10**

**7**

THE 4-H COUNTY COUNCIL OF WHARTON INVITES YOU TO  
**THE ANNUAL AWARDS BANQUET**

THURSDAY, AUGUST 10, 2017 • 6:00 P.M.  
WCYF FAIRGROUNDS • CRESCENT HALL

**FAJITA  DINNER**

NO COVER CHARGE • DONATION ARE APPRECIATED

**RSVP BY AUG 5**  
**979-532-3310**



TEXAS A&M  
**AGRI LIFE**  
EXTENSION

*Texas A&M AgriLife Extension provides equal opportunities in its programs and employment to all persons, regardless of race, color, sex, religion, national origin, disability, age, genetic information, veteran status,*

**2016-2017**



# SILENT AUCTION



SOLD TO THE HIGHEST BIDDER

THIS YEAR WHARTON COUNTY 4-H WILL HAVE A SILENT AUCTION AT THE ANNUAL AWARDS BANQUET TO HELP RAISE FUNDS FOR THE PROGRAM.

WE ARE ASKING FOR DONATIONS FOR THE AUCTION THAT ARE VALUED AT AT LEAST \$25. PLEASE PROVIDE A BRIEF DESCRIPTION OF YOUR DONATION TO THE EXTENSION OFFICE BY JULY 21. THANK YOU FOR YOUR SUPPORT!



ITEMS TO CEO BY  
**AUG 5**



## CLUB CHARTERING DEADLINE JULY 14, 2017

Club managers must complete charter application and uploads bank statement(s), financial review, and new/revised bylaws (in pdf format) into 4-H CONNECT by **JULY 14, 2017** in order for your club to be Active when 4-H Enrollment starts on August 15, 2017.

---

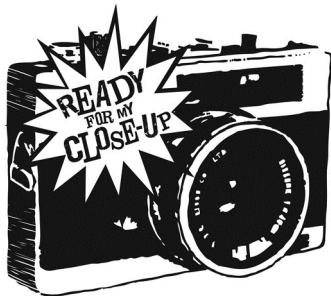
## LIVESTOCK PROJECTS

4-H members who want assistance in selecting their 4-H livestock projects or would like further advice on managing their projects are encouraged to communicate with their club managers, and are also welcome to seek assistance from your county agent, Rachel Berry. Mrs. Berry is available to make project visits and provide advice on your projects.

Here is a helpful website for 4-H members interested in showing livestock:

<http://texasyouthlivestock.com/>

---



## TAKE PICTURES

Tell us what is going on at your club meetings or other 4-H activities. Let's promote 4-H in our community and show Wharton County what 4-H is all about!

Send your pictures and stories to [stacey.shanks@ag.tamu.edu](mailto:stacey.shanks@ag.tamu.edu)

---

## STAY CONNECTED

You can stay up to date on events with Wharton County 4-H by following our Facebook page **Wharton County 4-H—Texas A&M AgriLife Extension**

<https://www.facebook.com/WhartonCounty4h/>



# 2017-2018

# MAJORS TEXAS LIVESTOCK SHOWS



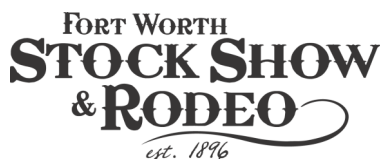
STATE FAIR OF TEXAS  
Sep 29—Oct 22, 2017

<http://bigtex.com>



HEART OF TEXAS FAIR & RODEO  
Oct 5—14, 2017

<http://hotfair.com>



FORT WORTH STOCK SHOW & RODEO  
Jan 12—Feb 3, 2018

<http://fwssr.com>



SAN ANGELO STOCK SHOW & RODEO  
Feb 2—18, 2018

<http://sanangelorodeo.com>



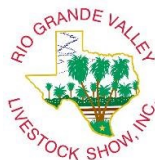
SAN ANTONIO STOCK SHOW & RODEO  
Feb 8—25, 2018

<http://sarodeo.com>



HOUSTON LIVESTOCK SHOW & RODEO  
Feb 27—Mar 18, 2018

<http://rodeohouston.com>



RIO GRANDE VALLEY LIVESTOCK SHOW  
Mar 8—18, 2018

<http://rgvls.com>



AUSTIN LIVESTOCK SHOW & RODEO  
Mar 10—24, 2018

<http://rodeoaustin.com>





**JULY BIRTHDAYS**

Layton Stary  
Destiny Mrnustik  
Zane Baker  
Kaidence Mejorado  
Reed Whittington  
Cole Janecek  
Riley Riha  
Zachary Fuechec  
Kaki Seay  
Meredith Radley  
Brent Vacek  
Claire Crowell  
Isabella Dujka  
Olivia Lutrick  
Philip Hundl  
Sadie Favors  
Michelle Sutton  
Logan Woodruff  
Konley Socha  
Evan Vasquez  
Grace Evans

**AUGUST BIRTHDAYS**

Caitlyn Fuechec  
Riley Wallis  
Jillian Owens  
Kate Salas  
Anna Kight  
Ashley Fisher  
Clayton Snow  
Reed Jung  
Bethany Baker  
Brody Frankum  
Ty Bubela  
Emilia Pyle  
Richard Lormand  
Ryon Korenek





# WHARTON COUNTY 4-H CLUBS

| CLUB                         | POSITION       | NAME             | PHONE        | EMAIL                      |
|------------------------------|----------------|------------------|--------------|----------------------------|
| Boling Country 4-H           | Club Manager   | Nicole Orsak     | 979-532-8974 | norsak@insurancenetusa.com |
| Boling Country 4-H           | Project Leader | Theresa Wittig   |              | metalheart06@gmail.com     |
| Boling Kids 4-H              | Club Manager   | Susan Joyce      | 979-657-2924 | Susan.joyce@live.com       |
| Botts & Bridle 4-H           | Club Manager   | Ellen Owens      | 979-533-0688 | Ellen_688@yahoo.com        |
| Boots & Bridle 4-H           | Project Leader | Stephanie Alford | 979-332-1391 | Stephanie_alford@yahoo.com |
| Boots & Bridle 4-H           | Project Leader | Tanya Sanchez    |              | tsanchez@bolingisd.net     |
| East Bernard 4-H             | Club Manager   |                  |              |                            |
| East Bernard 4-H             | Project Leader | Thomas Mahalitic |              | mahaltic@att.net           |
| East Bernard 4-H             | Project Leader | Holli Mahalitic  |              | mahalitic@att.net          |
| East Bernard Shooting Sports | Club Manager   |                  |              |                            |
| East Bernard Helping Hands   | Club Manager   | Cheryl Failla    | 979-335-6599 | cheryl@wt.net              |
| East Bernard Helping Hands   | Project Leader | Tammy Dotson     |              | tdotson@whartonisd.net     |
| East Bernard Prairie 4-H     | Club Manager   | Cheryl Failla    | 979-335-6599 | cheryl@wt.net              |
| East Bernard Prairie 4-H     | Project Leader | Daphne Fucik     |              | dfucik@msn.com             |
| East Bernard Prairie 4-H     | Project Leader | Melissa Janecek  |              | Melissa.janecek@ebisd.org  |
| El Campo Country Kids 4-H    | Club Manager   | Stacy McGill     | 979-541-9308 | stacymcgill@hotmail.com    |
| El Campo Country Kids 4-H    | Project Leader | Peter McGill     |              | pjmcguill@ag.tamu.edu      |
| El Campo Jr-Sr 4-H           | Club Manager   | Stephanie Lyford | 979-320-7800 | slyford@att.net            |
| El Campo Jr-Sr 4-H           | Project Leader | Katherine Bubela |              | kabubela@hotmail.com       |
| El Campo Prairie Switch 4-H  | Club Manager   | Juila Evanicky   | 979-541-7284 | Jaevani_62@yahoo.com       |
| El Campo Prairie Switch 4-H  | Project Leader | Fredia Sutton    |              | Fmsutton_us@yahoo.com      |



# WHARTON COUNTY 4-H CLUBS

| CLUB                         | POSITION       | NAME              | PHONE        | EMAIL                         |
|------------------------------|----------------|-------------------|--------------|-------------------------------|
| Faith Christian Academy      | Club Manager   | Maggie Mejorado   | 832-656-9018 | lpparagirl@yahoo.com          |
| Hillje-Louise 4-H            | Club Manager   | Sara Weathers     | 979-332-0710 | Sara_kasper02@yahoo.com       |
| Hillje-Louise 4-H            | Project Leader | Jennifer Burns    |              | jnbruns77@yahoo.com           |
| Hillje-Louise 4-H            | Project Leader | Shelly Schulz     |              | Schulz.shelly@gmail.com       |
| Hillje-Louise 4-H            | Project Leader | Michelle Zahn     | 979-332-9325 | newbeginningsec@sbcglobal.net |
| Lissie Prairie 4-H           | Club Manager   | Stephanie Guthman | 979-234-3211 | Stephanie.guthman@ebisd.org   |
| River Road 4-H               | Club Manager   | Nora Chalue       | 979-532-0669 | nchalue@gmail.com             |
| Taiton-Jones Creek 4-H       | Club Manager   | Valerie Woodruff  | 979-541-7999 | valwoodruff@hotmail.com       |
| Taiton-Jones Creek 4-H       | Project Leader | Tana Martin       |              | tmartin@ecisd.org             |
| Wharton Caney Creek 4-H      | Club Manager   | Lydia Reyna       | 979-533-3673 | lydiareyna@tocketmail.com     |
| Wharton Caney Creek 4-H      | Project Leader | Dana Foyt         |              | danafoyt@yahoo.com            |
| Wharton Caney Creek 4-H      | Project Leader | Michelle Hancock  |              | treymichellehancock@gmail.com |
| Wharton Caney Creek 4-H      | Project Leader | Tara Krushall     |              | dewberrydumplin@yahoo.com     |
| Wharton County 4-H Livestock | Club Manager   | Rachel Berry      | 979-253-0645 | Rachel.berry@ag.tamu.edu      |
| Wharton County 4-H Livestock | Project Leader | Brandon Shanks    | 979-533-2409 | shanksleft@gmail.com          |
| Wharton County 4-H Livestock | Project Leader | Clint Watts       |              | wattsc03@aol.com              |
| Wharton County 4-H Outdoor   | Club Manager   | Karen Rose        | 979-543-6042 | prc2005@sbcglobal.net         |
| Wharton County 4-H Outdoor   | Project Leader | Cindi Bena        |              | Bca.bena@sbcglobal.net        |



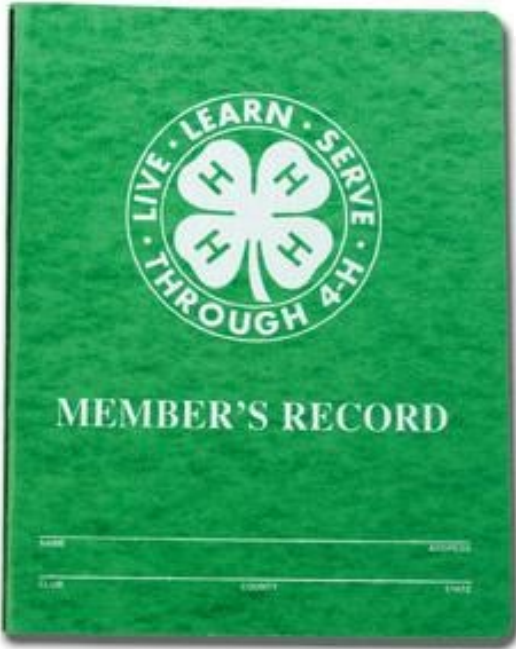
# DISTRICT 11 4-H RECORDBOOKS RESULTS JUNIOR DIVISION



| JUNIOR DIVISION |                                 | DISTRICT |
|-----------------|---------------------------------|----------|
| Myla Mahalitic  | Beef                            | 1        |
| Audrey Hudgins  | Citizenship & Civic Education   | 1        |
| Kasey Burns     | Clothing & Textiles             | 1        |
| Isabella Dujka  | Communication & Expressive Arts | 2        |
| Jade Romero     | Food & Nutrition                | 3        |
| Emily Glaze     | Goat                            | Blue     |
| London Cavness  | Personal Development            | 3        |
| Riley Wallis    | Rabbit                          | Blue     |



## DISTRICT 11 4-H RECORDBOOKS RESULTS INTERMEDIATE DIVISION



| JUNIOR DIVISION  |                    | DISTRICT |
|------------------|--------------------|----------|
| Lana Foty        | Food & Nutrition   | 3        |
| Treylyn Hancock  | Horse              | 2        |
| Taylor Watz      | Beef               | Blue     |
| Allison Bena     | Veterinary Science | 2        |
| Leslie Zahn      | Swine              | 1        |
| Davis Coldeway   | Shooting Sports    | 2        |
| Julianne Sellers | Rabbit             | Blue     |





# DISTRICT 11 4-H RECORDBOOKS RESULTS SENIOR DIVISION



| JUNIOR DIVISION   |                    | DISTRICT |
|-------------------|--------------------|----------|
| Zoey Zahn         | Clothing & Textlie | 1        |
| Abbey Sellers     | Food & Nutrition   | 1        |
| Amber Orsak       | Poultry            | 2        |
| Shelby AuBuchon   | Rabbit             | Red      |
| Marshall Mahalitc | Swine              | 2        |
| JR Schauer        | Beef               | Blue     |

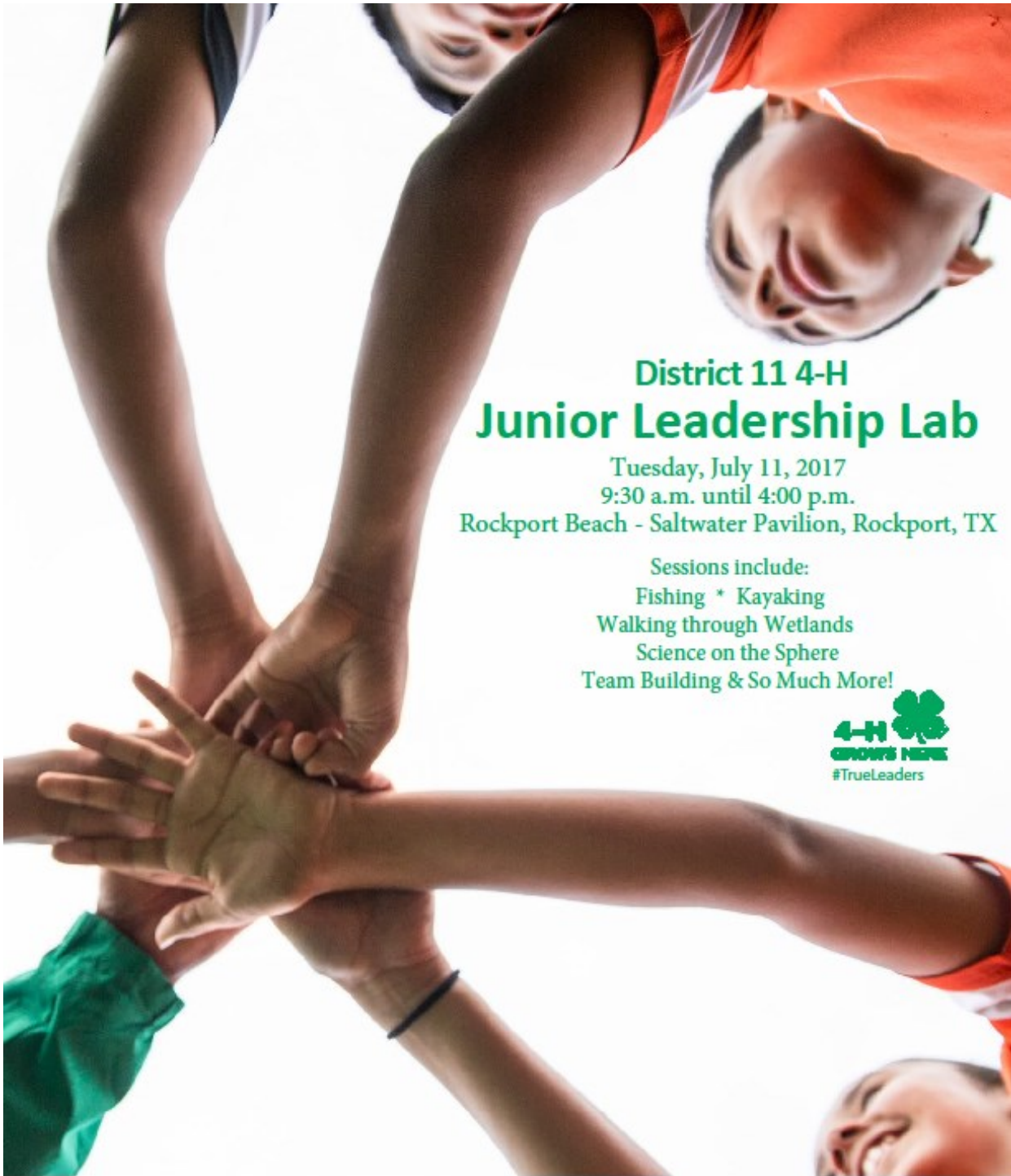
## TEXAS 4-H STATE RECORDBOOK JUDGING

First place Senior Record books are eligible to compete at State, and there is a \$15.00 fee for this opportunity. Members participating in the State Recordbook Contest will need to register online through 4-H CONNECT. The Texas 4-H State Recordbook Judging Contest will be held August 7, 2017.

**All books competing in the state contest must be turned into the County Extension Office no later than August 1**



# D11 JUNIOR LEADERSHIP LAB



## District 11 4-H Junior Leadership Lab

Tuesday, July 11, 2017

9:30 a.m. until 4:00 p.m.

Rockport Beach - Saltwater Pavilion, Rockport, TX

Sessions include:

- Fishing \* Kayaking
- Walking through Wetlands
- Science on the Sphere
- Team Building & So Much More!



Registration: May 15 - June 23

Registration must be completed via 4-H CONNECT

Cost: Youth - \$30 registration fee

Includes lunch, snacks, t-shirt, facility rental and insurance

More information including a map and schedule can be found at:

<http://d114-h.tamu.edu>



TEXAS A&M  
AGRI LIFE  
EXTENSION





## **2017 STATE PHOTOGRAPHY BEST OF SHOW**

**Congratulations to TYLER WILLIAMSON for winning BEST OF SHOW at the 2017 Texas 4-H State Photography Contest! It has been a dream of Tyler's to achieve this status since 5th Grade. We are so proud of this talented young man!!! Congrats Tyler!**



**BEST IN SHOW—DETAILS AND MACRO**

**Tyler Williamson—2017 Texas 4-H State Photography Contest**



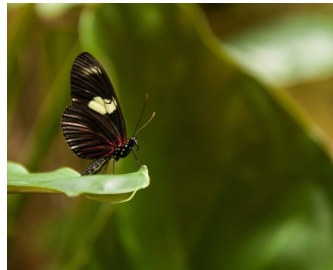


# 2017 STATE PHOTOGRAPHY RESULTS

**Congrats to all Seniors who competed in the State Photography Contest**



**RED AWARD**  
Animals Domestic  
Tyler Williamson



**BLUE AWARD**  
Animal Wildlife  
Tyler Williamson



**WHITE AWARD**  
Catch All  
Hannah Chumchal



**BLUE AWARD**  
Details & Macro  
Tyler Williamson



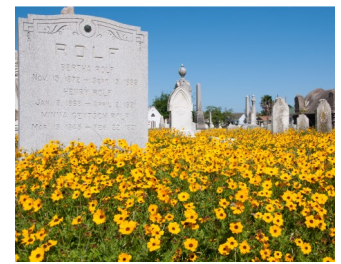
**RED AWARD**  
Dominant Color  
Blair Watz



**RED AWARD**  
Elements of Design  
Hannah Chumchal



**BLUE AWARD**  
Food  
Blair Watz



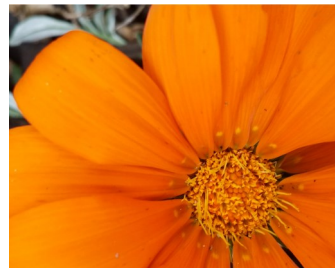
**RED AWARD**  
Nature/Landscape  
Tyler Williamson



**BLUE AWARD**  
Night  
Zoey Zahn



**RED AWARD**  
People  
Ryan Williamson



**RED AWARD**  
Plant/Flora  
Ryan Williamson



**RED AWARD**  
Theme  
Tyler Williamson



# RESULTS

**June 5-8, 2017**  
**College Station, TX**

*The members of Texas A&M AgriLife will provide equal opportunities in programs and activities, education, and employment to all persons regardless of race, color, sex, religion, national origin, age, disability, genetic information, veteran status, sexual orientation or gender identity and will strive to achieve full and equal employment opportunity throughout Texas A&M AgriLife.*





# 2017 TEXAS 4-H ROUNDUP RESULTS



## REGAN MCGUILL

**Awarded \$20,000 Scholarship  
San Antonio Livestock Exposition**

## LEADERS 4 LIFE

**2ND PLACE**

- Chelsey Ott**
- Bryar Blair**
- Hannah Chumchal**
- Michelle Sutton**
- Michael Rome**
- Regan McGill**





## 2017 TEXAS 4-H ROUNDUP RESULTS

| NAME            | CATEGORY  | PLACING |
|-----------------|---|---------|
| Amber Orsak     | Fashion Storyboard—Jewelry  | 1       |
| Ryan Williamson | Food Show—Grains  | 3       |
| Zoey Zahn       | Fashion Show—Construction   | 6       |
| Reed McGuill    | Health Educational Presentation                                   | 15      |
|                 | Food Challenge—Nutritious Snacks                                  | 10      |
|                 | Team Members: Abbey Sellers, Hannah Chumchal, Paige Romero        |         |
|                 | Duds to Dazzle—Non-Wearable                                       | 5       |
|                 | Team Members: Chelsey Ott, Elyssa Smith, Jillian Owens, Zoey Zahn |         |



### JUNE 2017

- June 2: DEADLINE: D11 Leadership Lab Registration – 4-H Connect
- June 5-8: Texas 4-H Round-Up – College Station
- June 9: DEADLINE: WCYF Award/Sale Thank You Notes – WCYF
- June 12: County STAR Award Interviews – CEO
- June 13-14: D11 Horse Show – Edna
- June 19-21: D11 Leadership Lab - TBA
- June 23: DEADLINE: D11 Jr. Leadership Lab Registration – 4-H Connect
- June 26: Major Show Steer/Heifer Tag In and State Fair Lamb/Goat/Hog Tag In – 4:00pm WCYF Amman Barn

### JULY 2017

- July 1: DEADLINE: D11 Record Book Entry – 4-H Connect
- July 6: D11 Record Book Judging - Victoria
- July 11: D11 Jr. Leadership Lab - TBA

### AUGUST 2017

- Aug. 7: Texas 4-H State Record Book Judging
- Aug. TBA: Wharton County 4-H Annual Awards Banquet
- Aug. 18: DEADLINE: 2018 Major Show Broiler/Turkey Orders - CEO
- Aug. 18: DEADLINE: 2018 Major Show Lamb/Goat Orders - CEO

County Extension Service: [www.agrilife.org/wharton4h](http://www.agrilife.org/wharton4h)

Fort Worth Stock show: [www.fwssr.com](http://www.fwssr.com)

San Antonio Stock show: [www.sarodeo.com](http://www.sarodeo.com)

Houston Stock show: [www.rodeohouston.com](http://www.rodeohouston.com)

Wharton County Youth Fair: [www.whartoncountyyouthfair.org](http://www.whartoncountyyouthfair.org)

WCYF phone number: 979-677-3350



**2016-2017 District 11 4-H Calendar**

| <b>2017</b>   | <b>Event</b>  | <b>Location</b>               | <b>Registration Info</b>  |
|---------------|---|-------------------------------|---|
| April 22      | Multi District Judging Contests                     | College Station               | 4-H Connect - Reg Deadline 3/31   |
| April 29      | D11 Rifle Match                                     | TBA                           | 4-H Connect - Reg Deadline TBA  |
| <b>May</b>    |   |                               |   |
| May 1         | Horse Validation - FINAL Deadline (\$20)            |                               | 4-H Connect - May 1   |
| May 20        | D11 Mohair Judging                                  | Kerr County Invitational      |   |
| <b>June</b>   |   |                               |   |
| June 3-4      | State Indoor 4-H Rifle Match                        | Victoria                      | 4-H Connect   |
| June 5-8      | Texas 4-H Roundup                                   | College Station               | 4-H Connect   |
| June 13-14    | D11 Horse Show                                      | Edna                          | 4-H Connect - Reg Deadline 5/26   |
| June 19-21    | D11 Leadership Lab                                  | TBA                           | 4-H Connect - Reg Deadline 6/2  |
| June 26-28    | County Camp I                                       | TX 4-H Center - Brownwood     | <a href="http://texas4hcenter.tamu.edu/">http://texas4hcenter.tamu.edu/</a> |
| June 28-30    | County Camp II                                      | TX 4-H Center - Brownwood     | <a href="http://texas4hcenter.tamu.edu/">http://texas4hcenter.tamu.edu/</a> |
| <b>July</b>   |   |                               |   |
| July 4-6      | County Camp III                                     | TX 4-H Center - Brownwood     | <a href="http://texas4hcenter.tamu.edu/">http://texas4hcenter.tamu.edu/</a> |
| July 6        | D11 Recordbook Judging                              | TBA                           | 4-H Connect - Reg Deadline 7/1  |
| July 10-13    | Prime Time Xtreme                                   | TX 4-H Center - Brownwood     | <a href="http://texas4hcenter.tamu.edu/">http://texas4hcenter.tamu.edu/</a> |
| July 11       | D11 Junior Leadership Lab                           | TBA                           | 4-H Connect - Reg Deadline 6/23   |
| July 16-22    | State Shooting Sports Games (shotgun & Archery)     | San Antonio                   |   |
| July 22-30    | Texas State 4-H Horse Show                          | Abilene                       | 4-H Connect   |
| July 16-19    | Prime Time I (completed grades 5-8)                 | TX 4-H Center - Brownwood     | <a href="http://texas4hcenter.tamu.edu/">http://texas4hcenter.tamu.edu/</a> |
| July 19-22    | Prime Time II (completed grades 2-5)                | TX 4-H Center - Brownwood     | <a href="http://texas4hcenter.tamu.edu/">http://texas4hcenter.tamu.edu/</a> |
| July 9-14     | State Shooting Sports Games (all other disciplines) | Manor                         |   |
| <b>August</b> |   |                               |   |
| Aug 7         | State Recordbook Judging                            | Victoria Co 4-H Activity Ctr. | 4-H Connect   |
| Aug 27        | D11 Shooting Sports Leader Meeting                  | Victoria Co 4-H Activity Ctr. |   |
|               | *denotes date and/or location TBA                   |                               |   |
|               |   |                               |   |
|               |   |                               |   |
|               |   |                               |   |
|               |   |                               |   |
|               |   |                               |   |
|               |   |                               |   |
|               |   |                               |   |
|               |   |                               |   |
|               |   |                               |   |
|               |   |                               |   |
|               |   |                               |   |



# July 2017

| Sunday | Monday | Tuesday  | Wednesday | Thursday                                | Friday | Saturday   |
|--------|--------|--|-----------|---|--------|--|
|        |        |  |           |   |        | 1<br>DEADLINE:<br>D11 Recordbook<br>Entry<br>4-H CONNECT |
| 2      | 3      | 4  | 5         | 6<br>D11 Recordbook<br>Judging—Victoria | 7      | 8  |
| 9      | 10     | 11<br>D11 Jr Leadership<br>Lab   | 12        | 13                                      | 14     | 15   |
| 16     | 17     | 18   | 19        | 20                                      | 21     | 22   |
| 23     | 24     | 25   | 26        | 27                                      | 28     | 29   |
| 30     | 31     | <p>COUNTY 4-H EVENTS</p> <p>WCYF EVENTS</p> <p>DISTRICT 11 EVENTS</p> <p>TEXAS 4-H STATE EVENTS</p> <p>MAJOR STOCK SHOW EVENTS</p> |           |   |        |  |





# August 2017

| Sunday | Monday  | Tuesday  | Wednesday | Thursday   | Friday   | Saturday |
|--------|---|--|-----------|--|--|----------|
|        |   | 1  | 2         | 3  | 4  | 5        |
| 6      | 7<br>Texas 4-H<br>State Recordbook<br>Judging | 8  | 9         | 10<br>Wharton County<br>4-H Annual Awards<br>Banquet | 11   | 12       |
| 13     | 14  | 15   | 16        | 17   | 18 DEADLINE:<br>Major Show<br>Turkey/Broiler<br>Orders to CEO<br><br>Major Show Lamb/<br>Goat Orders to<br>CEO | 19       |
| 20     | 21  | 22   | 23        | 24   | 25   | 26       |
| 27     | 28  | 29   | 30        | 31   |  |          |
|        |   | <b>COUNTY 4-H EVENTS</b><br><b>WCYF EVENTS</b><br><b>DISTRICT 11 EVENTS</b><br><b>TEXAS 4-H STATE EVENTS</b><br><b>MAJOR STOCK SHOW EVENTS</b> |           |  |  |          |

# TEXAS A&M AGRI LIFE EXTENSION

## WHARTON COUNTY

315 E. Milam St. • Suite 112

Wharton, TX 77488

Office: 979-532-3310 • Fax: 979-532-8863

[agrilife.org/wharton4h](http://agrilife.org/wharton4h)

### RACHEL BERRY

County Extension Agent  
4-H and Youth Development

### CORRIE BOWEN

County Extension Agent  
Agriculture and Natural Resources

### LORI SCHINDLER

County Extension Agent  
Family & Consumer Sciences

### KASHARA BELL

Prairie View Extension Agent  
Family & Consumer Sciences

### KATE HARRELL

Extension Agent  
Jackson, Matagorda & Wharton Counties  
Integrated Pest Management



## Our Vision

Help Texans better their lives

## Our Mission

Through the application of science-based knowledge, we create high-quality, relevant continuing education that encourages lasting and effective change

## What We Do

We provide programs, tools and resources—local and statewide—that teach people how to improve agriculture and food production, advance health practices, protect the environment, strengthen our communities, and enrich youth.

The members of Texas A&M AgriLife will provide equal opportunities in programs and activities, education, and employment to all persons regardless of race, color, sex, religion, national origin, age, disability, genetic information, veteran status, sexual orientation or gender identity and will strive to achieve full and equal employment opportunity throughout Texas A&M AgriLife.

The Texas A&M University System, U.S. Department of Agriculture, and the County Commissioners Courts of Texas Cooperating

Individuals with disabilities who require an auxiliary aid, service or accommodation in order to participate in any Extension activity, are encouraged to contact the County Extension Office for assistance 5 days prior to the activity.