



Pest Cast

The Row Crops IPM Newsletter for the LRGV, a cooperative project of Texas AgriLife Extension Service and the Cotton & Grain Producers of the lower Rio Grande Valley

Danielle Sekula
 IPM Extension Agent

John W. Norman, Jr.
 Editor

Volume XXXVI

Issue 8, May 17, 2013

General Situation

Scattered showers fell over the weekend totaling a little over 1.25 inches in Hidalgo county. In Cameron county there were numerous fields that received 1.5-3 inches over the weekend. Temperatures have been in the low 80s during the day with cloud overcast but things are heating up quickly.

Cotton

Majority of the area's cotton is blooming and squaring nicely. Insect activity was greatly reduced this week compared to last week in most fields observed. Beneficials such as convergent ladybeetles were seen building up to good numbers. In the mid Valley reports of a few fleahoppers with light square blasting were observed. Overall fleahopper activity has been relatively low. There was a slight increase in adult whitefly activity throughout the area but whiteflies were found in greater numbers near Brownsville. In the Brownsville area reports of adult whitefly counts as high as 4 to 5 adults per leaf and no nymphs being seen yet. Aphid infestations are high in the Brownsville area as well warranting the need for a few fields to be sprayed.

LRGV BOLL WEEVIL TRAPPING INFORMATION

YTD	2013	2012	2011	2010	2009	2008	2007	2006	2005
	.00118	.00917	.00189	.00806	.17765	.13110	.27630	.35697	1.52198

Week Ending	2013	2012	2011	2010	2009	2008	2007	2006	2005
3/24/13	.00096	.01617	.00056	.00691	.73856	.14043	.10683	.48544	0
3/31/13	.00435	.03353	.00476	.00672	.19847	.08503	.64118	.37552	0
4/7/13	.00099	.01617	.00360	.00592	.11633	.30512	.40392	.88875	6.47392
4/14/13	.00076	.01572	.00114	.00312	.23686	.17102	.36414	.18005	2.96203
4/21/13	.00060	.00339	.00133	.01426	.38106	.05425	.23751	.15855	3.48685
4/28/13	.00058	.00474	.00043	.01528	.09081	.09113	.18227	.08629	1.70269
5/5/13	.00060	.00136	.00077	.00825	.05548	.08168	.07073	.09976	.73028
5/12/13	.00216	.00096	.00174	.00291	.02454	.07013	.17113	.09204	.72057

Traps inspected for current week: 20,830

BEET ARMYWORM TRAPPING

Week Ending	2013	2012	2011	2010	2009
3/24/13	0	0	10.2941	0	2.662
3/31/13	0	0	4.44	0	5.960
4/7/13	0	0	3.17949	0	29.80
4/14/13	36.0896	80.0556	10.7143	0	26.31
4/21/13	.15104	14.475	24.5417	0	25.36
4/28/13	24.0909	2.25349	14.6769	0	18.51
5/5/13	15.3864	1.84911	448.31	0	9.145
5/12/13	10.5846	39.1607	34.070	0	16.77

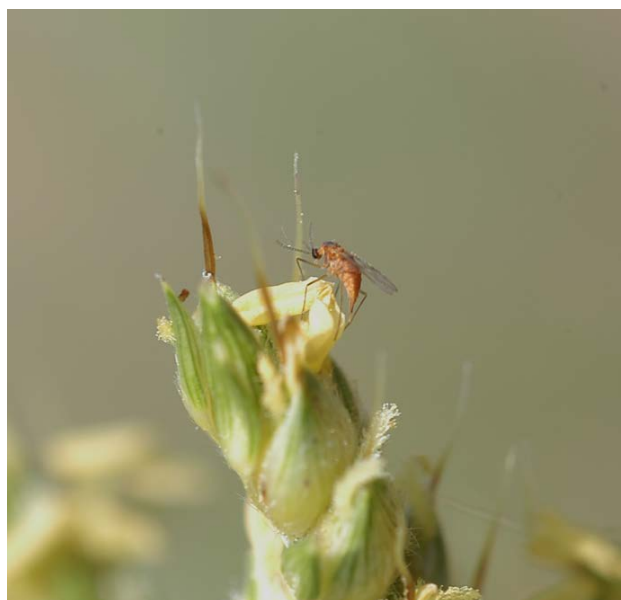
Traps inspected for current week: 65

Grain Sorghum

It's mid-May and if you have grain sorghum now would be a good time to check for sorghum midge. Sorghum midges were observed this week in the mid Valley area. One field in the western part of Hidalgo County was treated for sorghum midge. With recent rains it might be a good idea to manage growing weeds such as Johnson grass alongside sorghum fields, and ditches to discourage midge developing on them and moving to sorghum.

Sorghum midge adults are tiny 1/16 inch long with an orange-red abdomen and have the life span of 1 day. In the winter sorghum midge overwinter in the aborted sorghum seeds or in Johnson grass. Adults emerge in the spring in search for flowering host plants. When sorghum blooms the female will lay about 50 light yellow eggs in the flowering spikelets. The eggs will hatch in 2-3 days, and the larvae will feed on the undeveloped kernel turning dark orange in color. The midge larvae will complete development in 9-11 days and pupate before emerging.

Sorghum midge can complete a generation in 14-16 days, and will have many generations during the season. It is because of the 1 day life span that monitoring daily for sorghum midge is recommended since midge numbers can increase rapidly. You are going to want to scout for midge in field from 10 a.m. to 2 p.m. so as not to miss so midge emerging. Inspect flowering grain heads that have yellow colored flowers (not orange) for midge. If midge numbers exceed 1 per head you should consider control.



Sorghum Midge

Corn

No new insect activity was reported feeding on corn. In the mid Valley earworm eggs are being laid on corn. The egg lay has been increasing to the point that some fields no have 1egg per ear. Fields range in infestation levels from 20%-100%.

We thank the following Sponsors of the Pest Cast newsletter for their very generous contributions toward this effort.



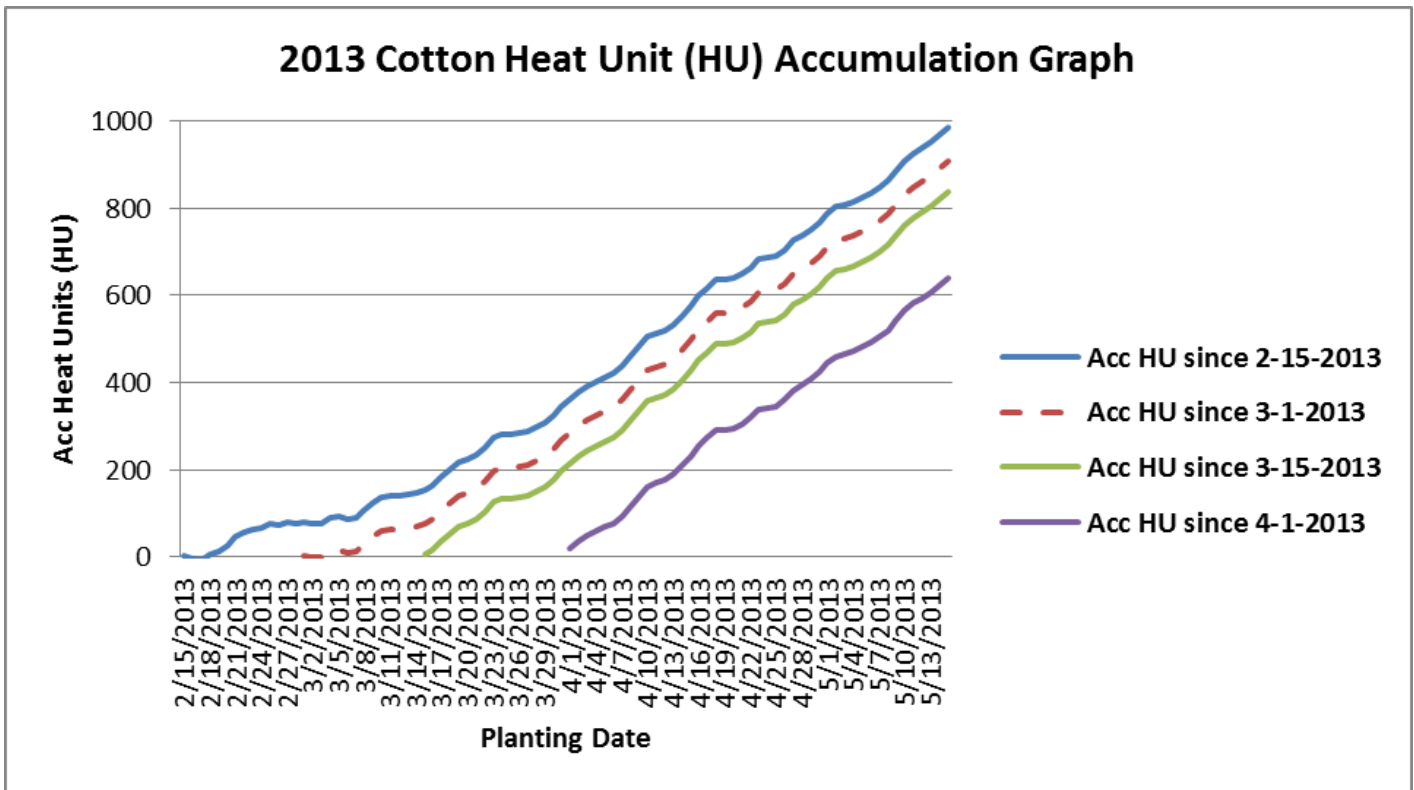
2013 Pest Cast Sponsors

Platinum: Progreso International Bridge
SRS Farms

Gold: Bayer CropScience
DuPont
Gulf Compress
Hidalgo County Farm Bureau
Texas Grain Sorghum Producers Board
Valley Co-op Oil Mill

Silver: Crop Production Services
Miller Chemical & Fertilizer
Nichino America
RGV Gin
Wilbur-Ellis
Willamar Gin

Bronze: Adams Farms
Bennack Flying Service
Dow AgroSciences
La Feria Co-op
Monsanto
Ross Gin
7L Farm
Texas AgFinance
Texas Crop Insurance



Contact Info

Pest Cast Newsletter
Texas AgriLife Extension Service
South District 12
2401 East Highway 83
Weslaco, TX 78596
(956) 968-5581
E-mail: Danielle.Sekula@ag.tamu.edu
d12south@ag.tamu.edu
<http://southtexas.tamu.edu>