



## Pest Cast

*The Row Crops IPM Newsletter for the LRGV, a cooperative project of Texas AgriLife Extension Service and the Cotton & Grain Producers of the lower Rio Grande Valley*

Danielle Sekula  
IPM Extension Agent

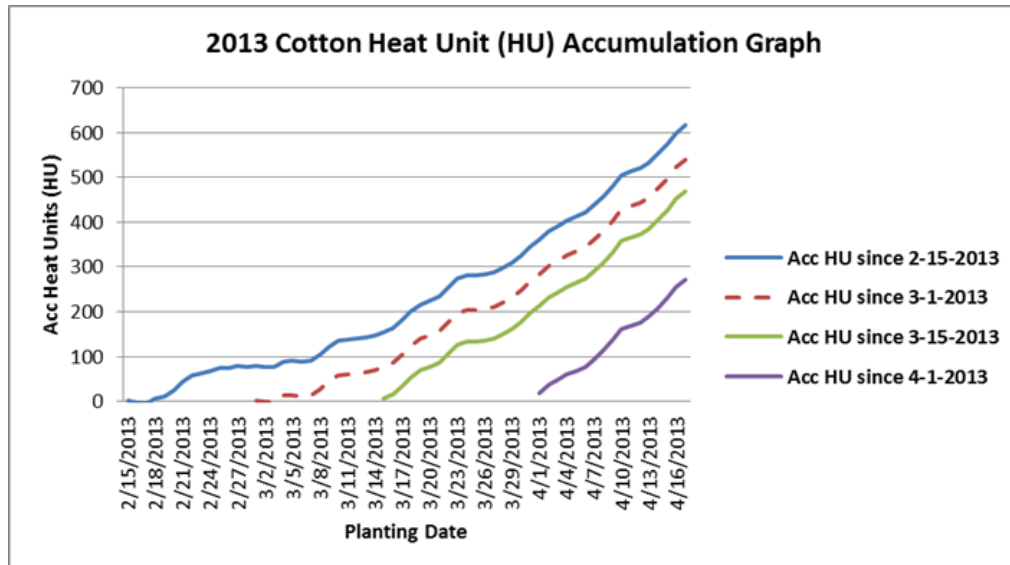
John W. Norman, Jr.  
Editor

Volume XXXVI

Issue 4, April 19, 2013

### General Situation

It was very windy with wind speeds 15mph to 30mph this whole week in the Valley. We had a light sprinkle Tuesday night and ending this week with a cold front. It started blowing in around 3 pm Thursday and dropped temperatures from 90°F to 58°F last night into this morning. High winds and blowing sand and dirt have inhibited plant growth and caused crop damage.



### Cotton

Cotton acreage has increased a little to 80,000 acres that have been planted here in the Valley. Aphid populations have increased in some areas of the valley and there have are reports that some cotton fields were sprayed for aphids in the past week. In the Rio Hondo area and near Laguna Atascosa Wildlife Refuge there have been reports of very light fleahopper populations. As onion fields dry out and harvest begins, thrips will begin moving into nearby cotton fields. They could cause damage to seedling cotton so be on the lookout for those populations. In the mid valley red spider mites and whiteflies are being reported on young cotton plants. Keep in mind that the Boll Weevil Eradication Foundation has started spraying some fields so we will have to keep an eye out for increases in populations of these or other pests as populations of beneficial athropods may be reduced.

## LRGV BOLL WEEVIL TRAPPING INFORMATION

YTD	2013	2012	2011	2010	2009	2008	2007	2006	2005
	.00134	1.02902	.00278	.00597	.24503	.20438	.40011	.62194	4.65464

Week Ending	2013	2012	2011	2010	2009	2008	2007	2006	2005
3/24/13	.00096	.01617	.00056	.00691	.73856	.14043	.10683	.48544	0
3/31/13	.00435	.03353	.00476	.00672	.19847	.08503	.64118	.37552	0
4/7/13	.00099	.01617	.00360	.00592	.11633	.30512	.40392	.88875	6.47392
4/14/13	.00076	.01572	.00114	.00312	.23686	.17102	.36414	.18005	2.96203

Traps inspected for current week: **27,867**

## BEET ARMYWORM TRAPPING

Week Ending	2013	2012	2011	2010	2009
3/24/13	0	0	10.2941	0	2.662
3/31/13	0	0	4.44	0	5.960
4/7/13	0	0	3.17949	0	29.80
4/14/13	36.0896	80.0556	10.7143	0	26.31

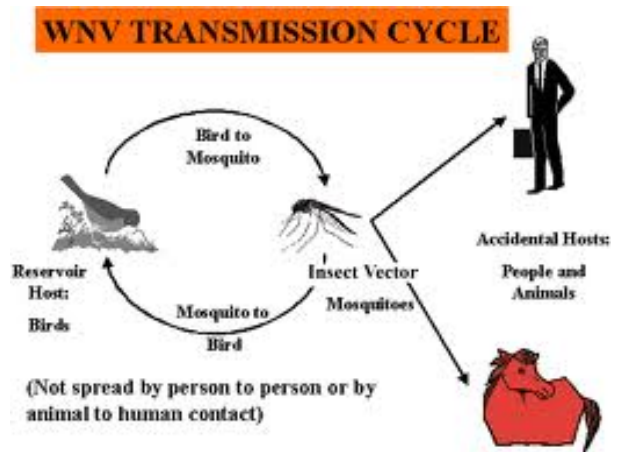
Traps inspected for current week: **67**

## Grain Sorghum and Corn

Not much insect activity going on in grain sorghum and corn. Both have had the usual light worm activity but the real culprit has been the strong winds causing wind damage. Light infestations of spider mites are being seen in some fields.

## West Nile Virus in Texas

Even though it has been very dry this year it is still good to remind yourself to protect you and your family from mosquitos, especially the young and the old. West Nile virus is carried by mosquitos which first received the virus by feeding on infected birds that carry the virus in their bloodstream. The mosquito then transmits the virus to humans, horses, dogs and other animals when feeding. The Dallas morning news reported that: last year in Texas 1,739 people contracted the disease and 76 people died in Texas. Here in the Valley we have had a couple of West Nile cases in Cameron and Hidalgo counties. Symptoms are similar to



those who have the flu with body aches and fever. It is good to know that less than 1% of those who get infected by the virus become seriously ill. So when irrigating remember to spray with mosquito repellent and empty containers that could become potential breeding grounds for mosquitos.

**We thank the following Sponsors of the Pest Cast newsletter for their very generous contributions toward this effort.**



## 2013 Pest Cast Sponsors

Platinum: Progreso International Bridge  
SRS Farms

Gold: Bayer CropScience  
Gulf Compress  
Hidalgo County Farm Bureau  
Texas Grain Sorghum Producers Board  
Valley Co-op Oil Mill

Silver: Crop Production Services  
Miller Chemical & Fertilizer  
Nichino America  
RGV Gin  
Willamar Gin

Bronze: Adams Farms  
Bennack Flying Service  
Dow AgroSciences  
La Feria Co-op  
Monsanto  
Ross Gin  
7L Farm  
Texas AgFinance  
Texas Crop Insurance

### **Contact Info**

Pest Cast Newsletter  
Texas AgriLife Extension Service  
South District 12  
2401 East Highway 83  
Weslaco, TX 78596  
(956) 968-5581  
E-mail: [Danielle.Sekula@ag.tamu.edu](mailto:Danielle.Sekula@ag.tamu.edu)  
[d12south@ag.tamu.edu](mailto:d12south@ag.tamu.edu)  
<http://southtexas.tamu.edu>