

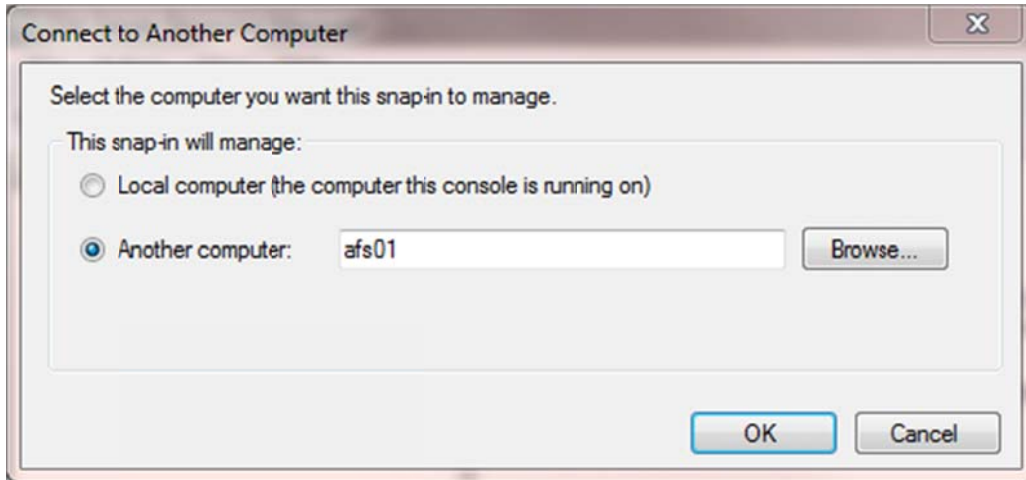
IT MANAGER GUIDE: MANAGING FILE SERVER QUOTAS

This document provides overview and guidance for departmental IT managers regarding the management of quotas on their AGNET Enterprise File Server.

Using the RSAT tool to manage Quotas

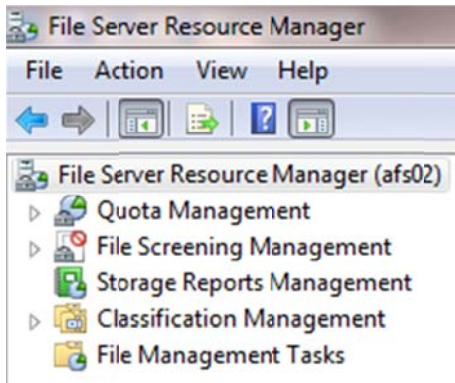
Your enterprise file server will come configured with several default Quotas in place.

To view and manage these Quotas, connect to your file server by clicking the [Start button -> Administrative Tools -> File Server Resource Manager](#). The tool will initially try to connect to your local computer (and fail). In the menu at the top click [Action -> Connect to Another Computer](#). In the following dialog box, enter the name of your enterprise file server.



If you're not sure of the name of your file server, it should be labeled on the front of the server or you can contact AIT.

The File Server Resource Manager has many five categories of management at the top level of the interface. For now we are only concerned with the first one, Quota Management.



Expanding Quota Management and then clicking on "Quotas" will display the standard quotas configured on all AgriLife Enterprise File Servers.

Quota Path	% Used	Limit	Quota Type	Source Template	Match Template	Description
Source Template: Group (1 item)						
D:\files\protect\group	80%	200 GB	Hard	Group	Yes	
Source Template: Overall Array Volume (1 item)						
D:\files	6%	2.60 TB	Hard	Overall Array Volume	Yes	
Source Template: Shared (1 item)						
D:\files\protect\share	17%	100 GB	Hard	Shared	Yes	
Source Template: Temp share (1 item)						
D:\files\temp	0%	100 GB	Hard	Temp share	Yes	
Source Template: User Private Shares (4 items)						
D:\files\protect\user*	---	10.0 GB	Hard (Auto Apply)	User Private Shares	Yes	
D:\files\protect\user\libin.alunmootil	0%	10.0 GB	Hard	User Private Shares	Yes	
D:\files\protect\user\joe.blow	0%	10.0 GB	Hard	User Private Shares	Yes	
D:\files\protect\user\garrett.mikovicka	0%	10.0 GB	Hard	User Private Shares	Yes	

Each of the configured quotas is listed with the source template above it in blue. You can edit a quota by simply double-clicking it to open its properties dialog box.

Quota Path	% Used	Limit	Quota Type	Source Template	Match Template	Description
Source Template: Group (1 item)						
D:\files\protect\group	80%	200 GB	Hard	Group	Yes	
Source Template: Overall Array Volume (1 item)						
D:\files				Overall Array Volume	Yes	
Source Template: Shared (1 item)						
D:\files\protect\share				Shared	Yes	
Source Template: Temp share (1 item)						
D:\files\temp				Temp share	Yes	
Source Template: User Private Shares (4 items)						
D:\files\protect\user*				User Private Shares	Yes	
D:\files\protect\user\libin.alunmootil				User Private Shares	Yes	
D:\files\protect\user\joe.blow				User Private Shares	Yes	
D:\files\protect\user\garrett.mikovicka				User Private Shares	Yes	

Quota Properties of D:\files\protect\group

Copy properties from quota template (optional):
Group Copy

Settings

Quota path:
D:\files\protect\group

Description (optional):

Space limit
Limit:
200,000 GB

Hard quota: Do not allow users to exceed limit
 Soft quota: Allow users to exceed limit (use for monitoring)

Notification thresholds

Threshold	E-mail	Event Log	Command	Report
Warning (85%)	▼			
Warning (95%)	▼	▼		
Warning (100%)	▼	▼		

Add... Edit... Remove

Disable quota

Help OK Cancel

Here you may modify the limit of the quota or edit the notifications sent when quotas are approached or reached. Note that all standard quotas deployed are hard quotas, which means once they are reached they will not allow further storage of files until the quota is modified.