

AN EASY GROUP QUILT

Fabric Requirements

108 5 1/2 inch squares (rotary cut)
 must use at least 1 St. Jude's fabric



Sewing Instructions

Connect them in rows of 9 each using 1/4 inch seams.
 Pressing each row will make matching the seams for each row easier.

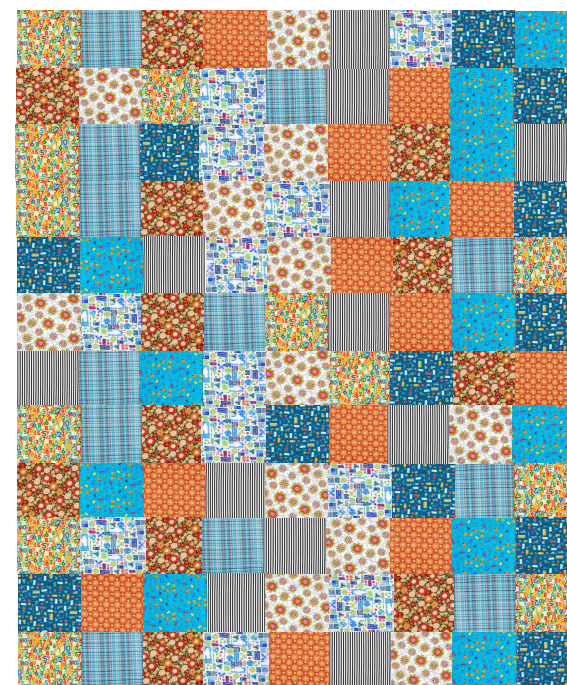


Sew each row together using a 1/4 inch seam. You should have 12 rows.
 Press each row after it is connected together.

For completion – layer backing, batting, and quilt top. (Backing should extend 3” all around).
 Pin very well to prevent bunching. Tack or have someone quilt the top.

Finish by bringing extra fabric to top and turning under or adding stripping.

Your final quilt top should look like this:



finished size 45-by-60

CONGRATULATIONS! YOUR COUNTY HAS JUST FINISHED YOUR FIRST QUILT!

Texas 4-H Clothing and Textiles Community Service Project

