

Reason Terminology For Breeding Beef

Breeding animals are generally placed on a combination of the following characteristics:

- Functionality
- Balance
- Width/Muscle
- *Performance*
- Structural correctness
- Feminine/masculine characteristics
- Correctness of condition

General Appearance

Desirable

- nicer Balanced
- more stylish
- strong topped, straighter lined
- cleaner/cleanest made
- meatier
- more eye appeal
- nicer profiling
- more eye appealing
- longer bodied
- more rugged (bulls)
- Conformationally the most correct

Undesirable

- narrow
- plain
- light-muscled
- narrow made
- poorly balanced
- over conditioned
- steep hipped

Head/Neck/Chest

Desirable

- more feminine fronted
- more masculine
- cleaner fronted
- trimmer fronted
- trimmer brisket
- wider, deeper chested
- longer fronted
- more extended through his/her front end
- ties a longer neck higher into the top of his/her shoulder

Undesirable

- coarse-headed
- plain-headed
- heavy brisket
- heavy fronted
- coarse fronted
- more conventional about his/her front end

Volume

Desirable

- Highest volumed
- deepest ribbed
- Boldest ribbed
- Bigger bodied
- deeper flanked
- bolder sprung
- more spring of rib
- bolder bodied

Undesirable

- shallow bodied
- tighter in her rib shape
- flatter sided
- narrow chested
- shallow flanked

Muscle/Width

Desirable

- heavier muscled
- more expressively muscled
- wider from stifle to stifle
- Built wider from the ground up.
- set functionally wider out of her pins (females)

Undesirable

- Light muscled
- narrow made
- narrow based
- studied plainer in his/her muscle shape

Condition

Desirable

-easier fleshing
-easier keeping
-leaner
-lighter
conditioned
-trimmer
patterned

Undesirable

-fattest
-wastiest made
-excessive in
his/her degree
of condition
-hard doing

Structure

Desirable

-structurally
sound
-smoother
shouldered
-more ideal set
to
shoulder
-stouter
structured
-heavier boned
-more
circumference of
bone
-squarer on feet
and legs
-more angle to
shoulder
-more desirable
slope to his
shoulder
-cleaner jointed
-stronger
pasterns
-more correct
set of hocks

-more correct
slope of
shoulder
-more laid back
in his/her
shoulder

Undesirable

-straight fronted
-more upright in
his/her shoulder
placement
-bucked at the
knees
-post legged
-sickle hocked
-cow hocked
-lighter boned
-finer boned
-toed out up
front
-frailer made
-toed in
-weak pastern
-bow-legged

Action or Walking

Desirable

- handled herself/himself more correctly on her/his feet and legs
- longer striding
- straighter moving
- freer or truer striding
- longer, freer striding
- freer, more fluid stride
- easier moving
- traveled truer off his (front, rear) legs
- moved with more flex to his hock
- truer tracking
- fills track on the move

Undesirable

- rolls in front
- moves close in front or behind
- knuckles over in the pasterns
- sluggish
- restricted in movement
- stands on his/her toes
- short, tight stride off both ends

Frame Terminology

Desirable

- larger framed
- growthier
- has more length and extension through his/her front end
- more future growth and outcome
- larger scaled
- shows more weight per day of age

Undesirable

- smaller framed
- smaller scaled
- quicker patterned
- showed a lower WDA in class

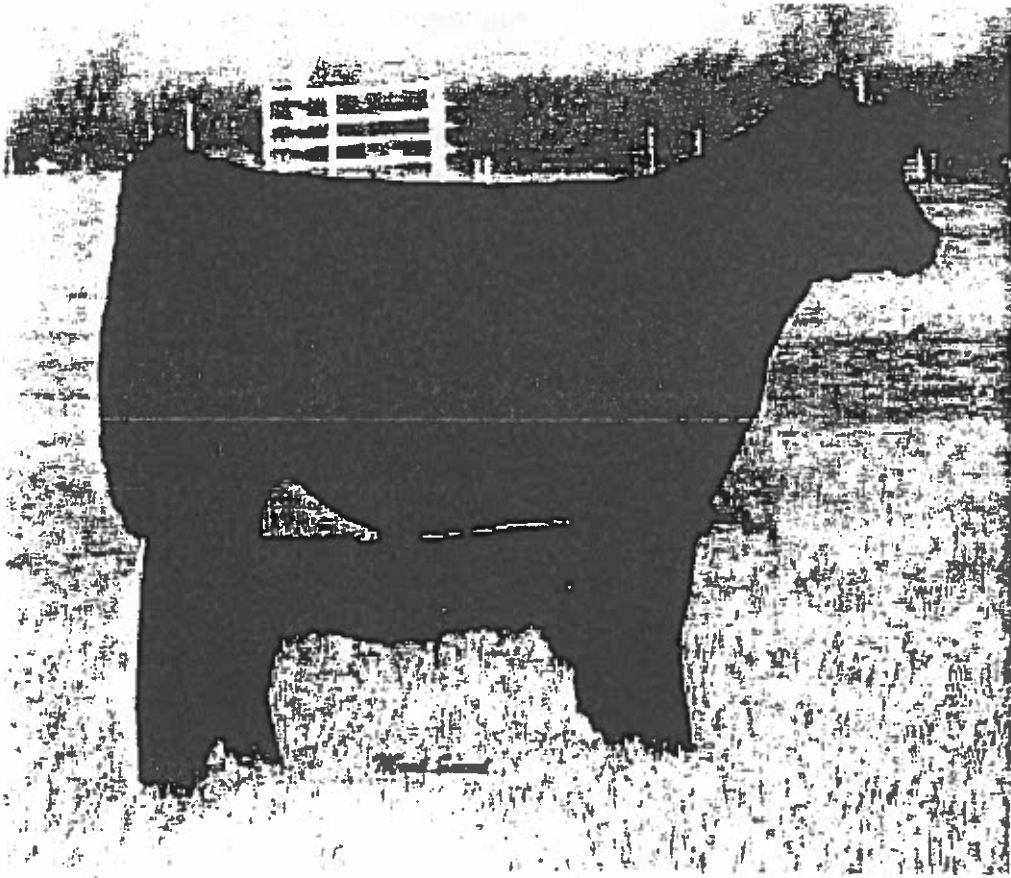
Projections

- △ -more brood cow potential
- △ -more replacement potential
- △ -should offer more breeding versatility
- △ ~~higher quality breeding piece~~
- △ -should produce a heavier muscled offspring
- △ -should produce a faster growing offspring
- △ -should offer more longevity within the herd

Progeny

- maintains themselves

Market Steers



Reason Terminology for Market Steers

A class of market steers is generally placed on a combination of the following characteristics:

- Muscle
- Correctness of finish
- Balance
- Performance
- Structural correctness

General Appearance

Desirable

- nicer Balanced
- more stylish
- straighter lined
- cleaner/cleanest
- more eye appeal
- nicer profile
- stouter constructed
- most powerfully built
- eye appealing
- more powerfully constructed

Undesirable

- small
- short-coupled
- plain
- light-muscled
- over-finished
- poorly balanced

Head/Neck/Shoulder

Desirable

- cleaner fronted
- cleaner patterned
- flat-shouldered
- smoother shouldered
- wider chested
- leaner/neater chest
- deeper heart
- longer fronted
- ties a longer neck, higher into the top of his shoulder

Undesirable

- coarse-headed
- wastier through his front end
- heavy-shouldered
- open-shouldered
- coarse-shouldered
- bold-shouldered
- narrow chested
- heavy fronted

Top/Loin/Ribs

Desirable

- more natural thickness down his top
- more dimension of muscle through his loin
- Spreads more dimension of muscle from rib to loin.
- More expressively muscled

Undesirable

- narrow-topped
- weak-topped
- shallow-ribbed

Middle

Desirable

- trimmer middled
- neater about his underline
- cleaner navel/sheath
- bolder bodied
- bigger bodied

Undesirable

- wasty-middled
- heavy-middled
- leathery navel/sheath
- dirty navel/sheath

Hindquarter

<u>Desirable</u>	<u>Undesirable</u>
-longer form	-steep-rumped
hooks to pins	-short rumped
-leveler from	-narrow rumped
hooks to pins	-light muscled
-leveler rumped	-narrow standing
-wider through his hip	-narrow tracking
-longer through his hip	-flat quartered
-more muscular rear quarter	-tapered through his quarter
-wider standing	
-tracks out wider	
-thicker, wider stifle	
-more outer turn to his quarter	
-more expressively muscled rear quarter	
-more volume of muscle through his hip/round	
-more bulge of muscle through the center of his rear quarter	
-stood wider from stifle to stifle	

Structure- (cause and effect)

<u>Desirable</u>	<u>Undesirable</u>
-structurally sound	-straight fronted
-smoother shouldered	-bucked at the knees
-more ideal set to shoulder	-post legged
-stouter structured	-sickle hocked
-bolder structured	-cow hocked
-wider structured	-lighter boned
-heavier boned	-finer boned
-more circumference of bone	-short, tight stride off both ends
-longer, Freer striding	-restricted in movement
-free, more fluid stride	-toed out up front
-easier moving	-tight in the hip
-traveled truer off his (front, rear) legs	-stiff moving toed in
-moved with more flex to his hock	-more upright in his shoulder placement
-truer tracking	
-squarer on feet and legs	-straighter off both ends of his skeleton
-more angle to shoulder	
-more desirable slope to his shoulder	
clean jointed	
-stood squarer from hock to ground	
-more laid back in his shoulder.	



Finish

Finish

Desirable

- firmer handling
- more uniform covering of finish
- a more correctly finished steer
- more likely to roll the grade choice
- more desirable degree of finish
- higher degree of finish over his 12th and 13th ribs
- handled more optimal in terms of his finish
- more market ready
- more uniform in his blanket of finish

Undesirable

- thin, bare
- soft finish
- soft handling
- overfinished
- underfinished
- over conditioned
- under conditioned

Carcass Merit

Desirable

- thicker, heavier muscled carcass
- will hang a pounds heavier carcass
- more total pounds of product
- higher percentage of saleable lean meat
- higher lean to fat ratio
- more total pounds of edible product
- more total pounds of lean meat
- rail a carcass breaking open to the larger ribeye

Undesirable

- will require more trim to his carcass
- hang the lightest carcass

Quality Grade

Desirable

- should hang a carcass more apt to grade choice
- Higher quality grading carcass
- should have a distinct advantage in a quality and yield situation

Undesirable

- lower quality
- less likely to reach the choice grade
- poorer quality
- less apt to grade choice

Yield Grade

Desirable

- produce a carcass with a more desirable yield grade
- Rail a carcass with a lower numerical yield grade
- higher cutability carcass
- trimmer carcass
- require less fat trim
- hang a meatier (more muscular) carcass
- higher cutting carcass

Undesirable

- lower cutability
- poorer cutability
- more retail fat trim
- less muscular
- fatter
- wastier

Tandem

Breeding Ewes

