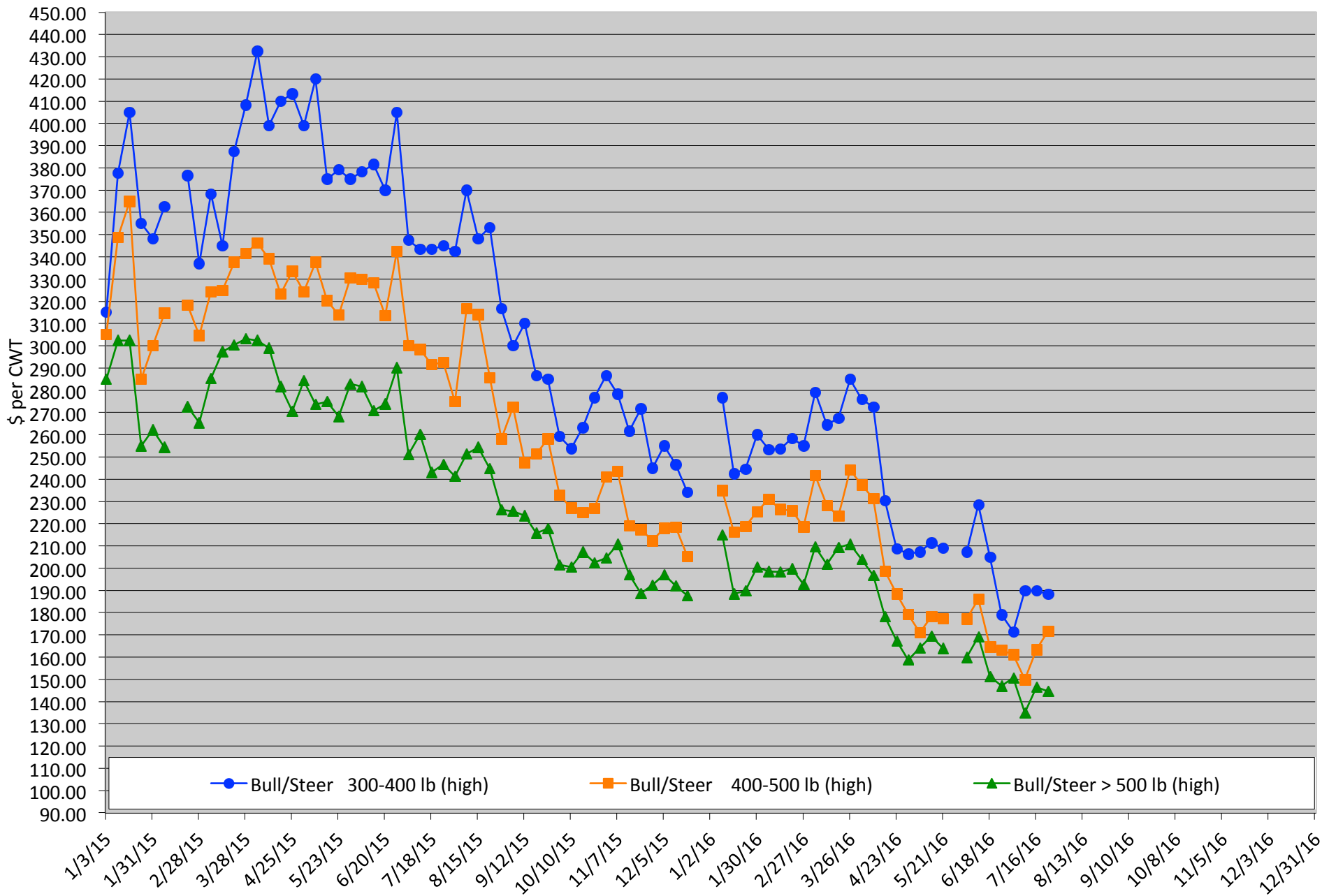


# Calf Price Trends

Trend of Highest Prices Reported for Various Weight Calves, Average of 3 East Texas Livestock Auctions

For a weekly email copy of this chart please subscribe at <http://beeffax.tamu.edu> or contact a Texas A&M AgriLife County Extension Agent

Chart created by Dr. Jason Banta, Extension Beef Cattle Specialist

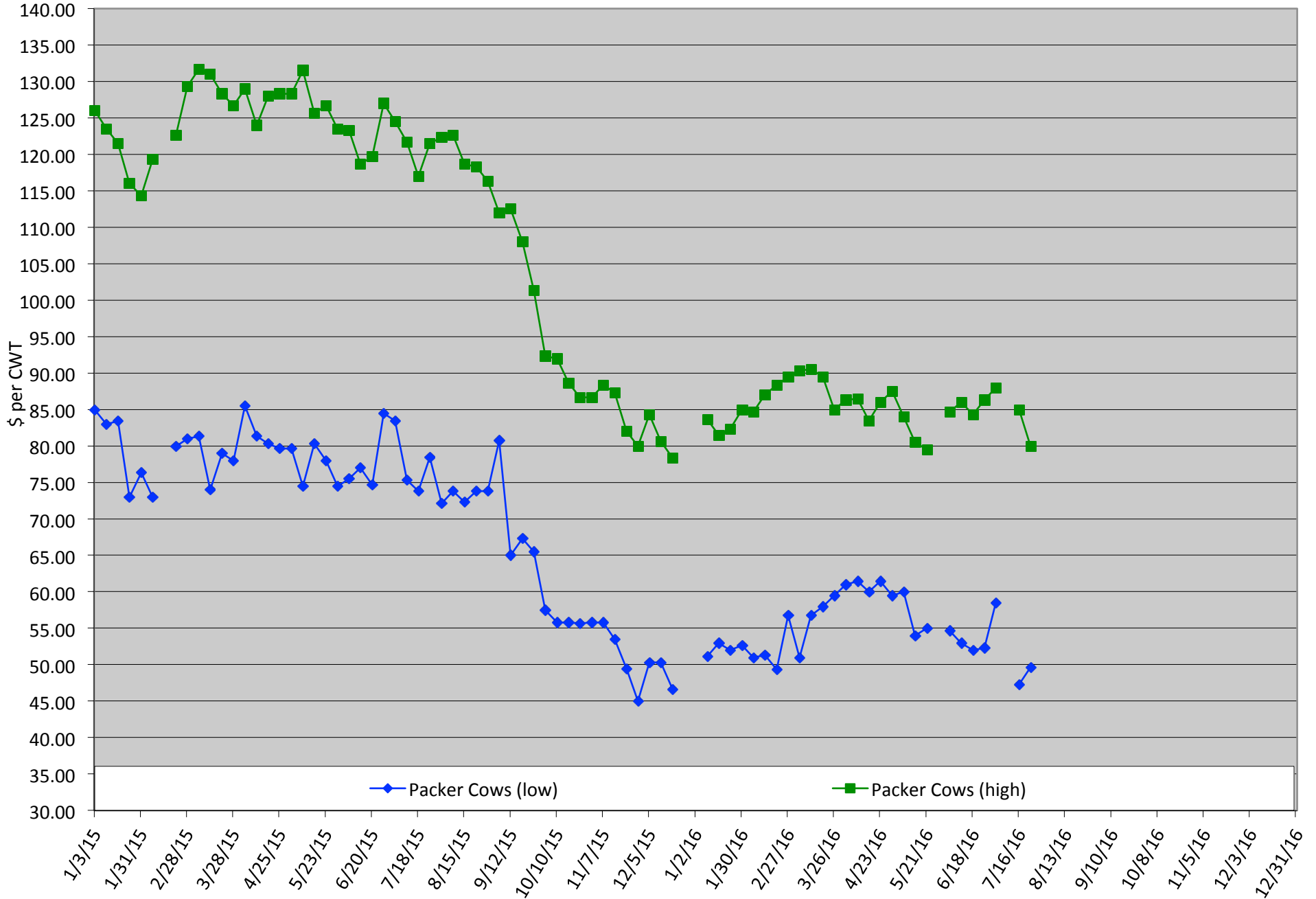


# Packer Cow PriceTrends

Trend of High and Low Prices Reported for Packer Cows, Average of 3 East Texas Livestock Auctions

For a weekly email copy of this chart please subscribe at <http://beeffax.tamu.edu> or contact a Texas A&M AgriLife County Extension Agent

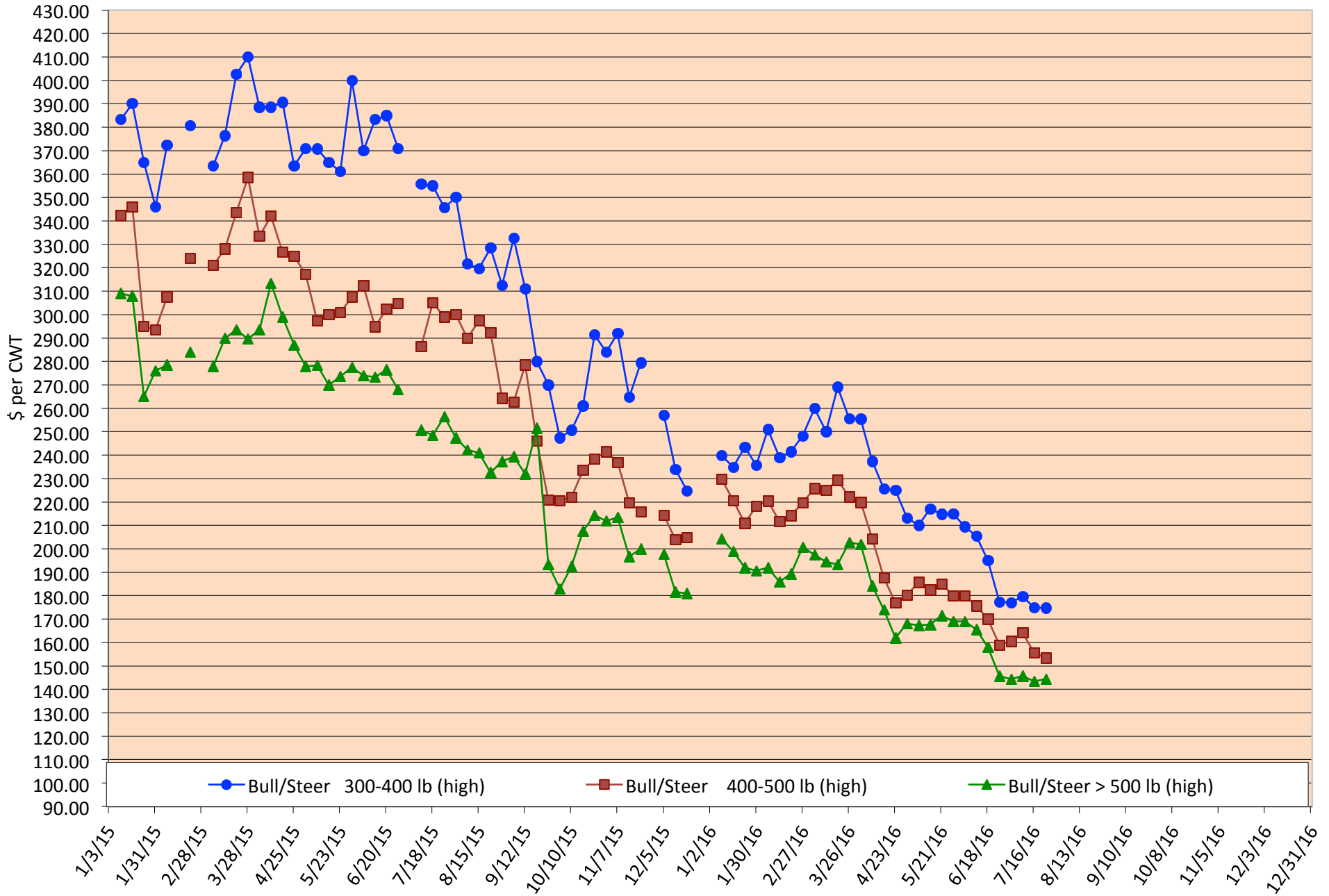
Chart created by Dr. Jason Banta, Extension Beef Cattle Specialist



# Calf Price Trends

Trend of Highest Prices Reported for Various Weight Calves, Average of 3 Central Texas Livestock Auctions

For a weekly email copy of this chart please subscribe at <http://beefax.tamu.edu> or contact a Texas A&M AgriLife County Extension Agent  
Chart created by Dr. Jason Banta, Extension Beef Cattle Specialist



# Packer Cow PriceTrends

Trend of High and Low Prices Reported for Packer Cows, Average of 3 Central Texas Livestock Auctions

For a weekly email copy of this chart please subscribe at <http://beeffax.tamu.edu> or contact a Texas A&M AgriLife County Extension Agent

Chart created by Dr. Jason Banta, Extension Beef Cattle Specialist

